


LOC I-FSD <b>109.9</b>	APCH CRS <b>030°</b>	Rwy Idg <b>8999</b> TDZE <b>1424</b> Arpt Elev <b>1430</b>	AL-396 [USAF]	JOE FOSS FLD (KFSD)
---------------------------	-------------------------	---	---------------	---------------------

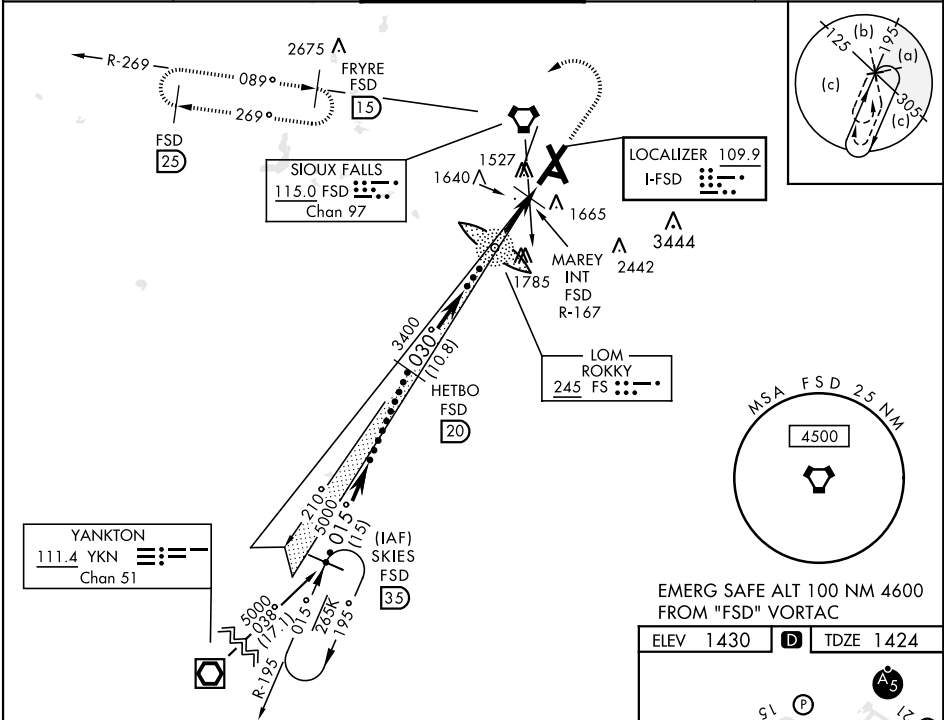
DME required.

▼ \* When ALS inop, increase CAT CDE RVR to 40, vis to ¾ mile.  
 \*\* When ALS inop, increase CAT CDE vis to 1 ½ mile.  
 \*\*\* When ALS inop, increase CAT CDE RVR to 55, vis to 1 mile.

MALSR 

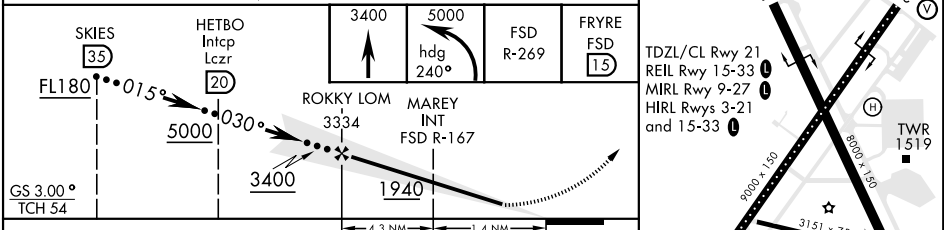
MISSED APPROACH: Climb to 3400, then climbing left turn to 5000 on heading 240° and FSD VORTAC R-269 to FRYRE (FSD 15 DME) and hold.

ATIS <b>126.6</b>	SIoux FALLS APP CON <b>125.8 306.2</b>	SIoux FALLS TOWER ★ <b>118.3(CTAF) 257.8</b>	GND CON <b>121.9 348.6</b>	ASR
----------------------	---	---	-------------------------------	-----



NC-1, 05 SEP 2024 to 03 OCT 2024

NC-1, 05 SEP 2024 to 03 OCT 2024



CATEGORY	C	D	E
S-ILS 3*	1674/24	250	(300-½)
S-LOC 3**	1940/55 516 (600-1)	1940/60 516	(600-1½)
CIRCLING	2060-1¾ 630 (700-1¾)	2200-2½ 770 (800-2½)	2300-3 870 (900-3)
MAREY FIX MINIMA			
S-LOC 3***	1780/30 356 (400-¾)	1780/40 356	(400-¾)
CIRCLING	2060-1¾ 630 (700-1¾)	2200-2½ 770 (800-2½)	2300-3 870 (900-3)

SIoux FALLS, SOUTH DAKOTA  
Amdt 9B 04NOV21

43°35'N-96°45'W

JOE FOSS FLD (KFSD)