

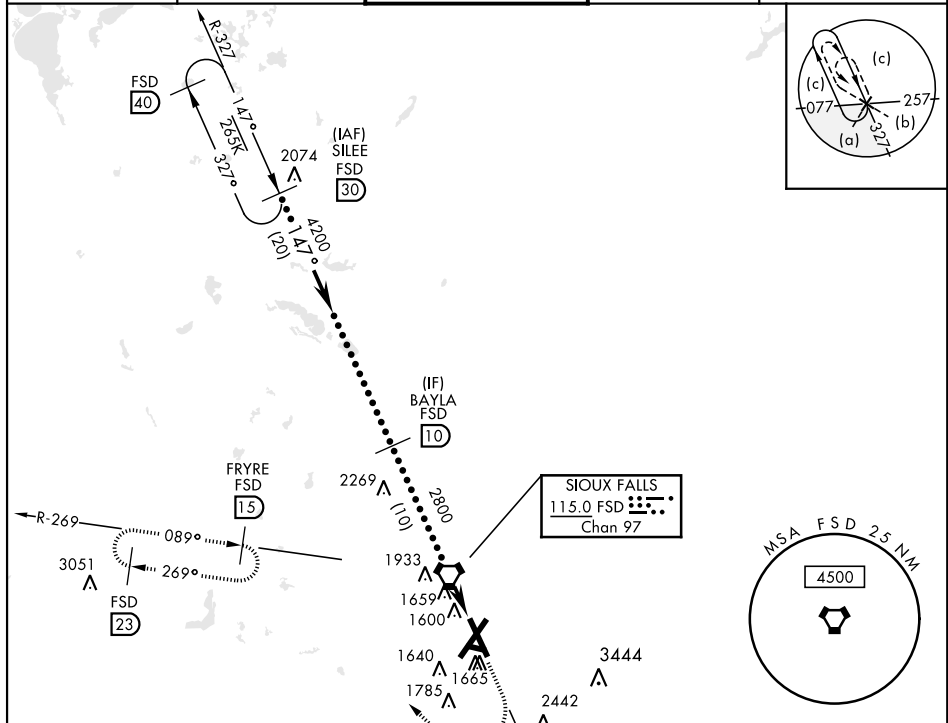
SIoux FALLS, SOUTH DAKOTA

HI-TACAN RWY 15

VORTAC FSD 115.0 Chan 97	APCH CRS 147°	Rwy ldg 8000 TDZE 1429 Arpt Elev 1430	AL-396 [USAF]	JOE FOSS FLD (KFSD)
--	-------------------------	--	---------------	---------------------

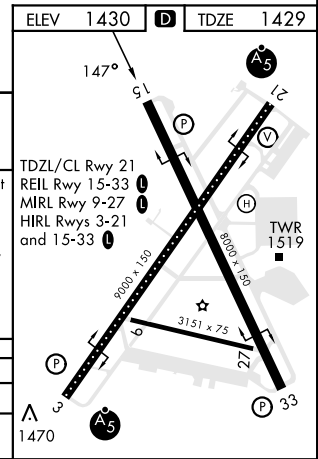
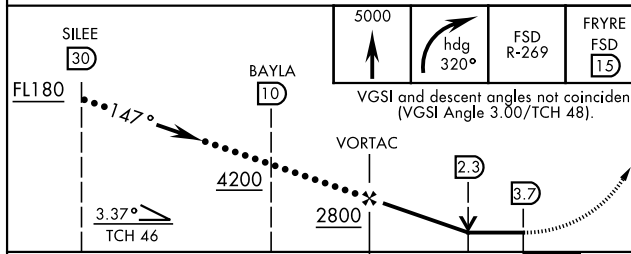
MISSED APPROACH: Climb to 5000 then right turn on heading 320° and FSD R-269 to FRYRE 15 DME and hold.

ATIS 126.6	SIoux FALLS APP CON 125.8 306.2	SIoux FALLS TOWER ★ 118.3(CTAF) 257.8	GND CON 121.9 348.6	ASR
----------------------	---	---	-------------------------------	-----



ELEV 1430	TDZE 1429
-----------	-----------

EMERG SAFE ALT 100 NM 4600



CATEGORY	C	D	E
S-15	1920-1¾	491 (500-1¾)	
☉ CIRCLING	2060-1¾ 630 (700-1¾)	2200-2½ 770 (800-2½)	2300-3 870 (900-3)

SIoux FALLS, SOUTH DAKOTA 43° 35'N-96° 45'W JOE FOSS FLD (KFSD)
 Amdt 8C 04NOV21

HI-TACAN RWY 15

NC-1, 05 SEP 2024 to 03 OCT 2024

NC-1, 05 SEP 2024 to 03 OCT 2024