

APP CRS 272°	Rwy Idg TDZE Apt Elev	3151 1424 1430
------------------------	-----------------------------	---

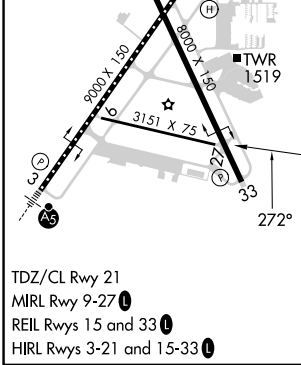
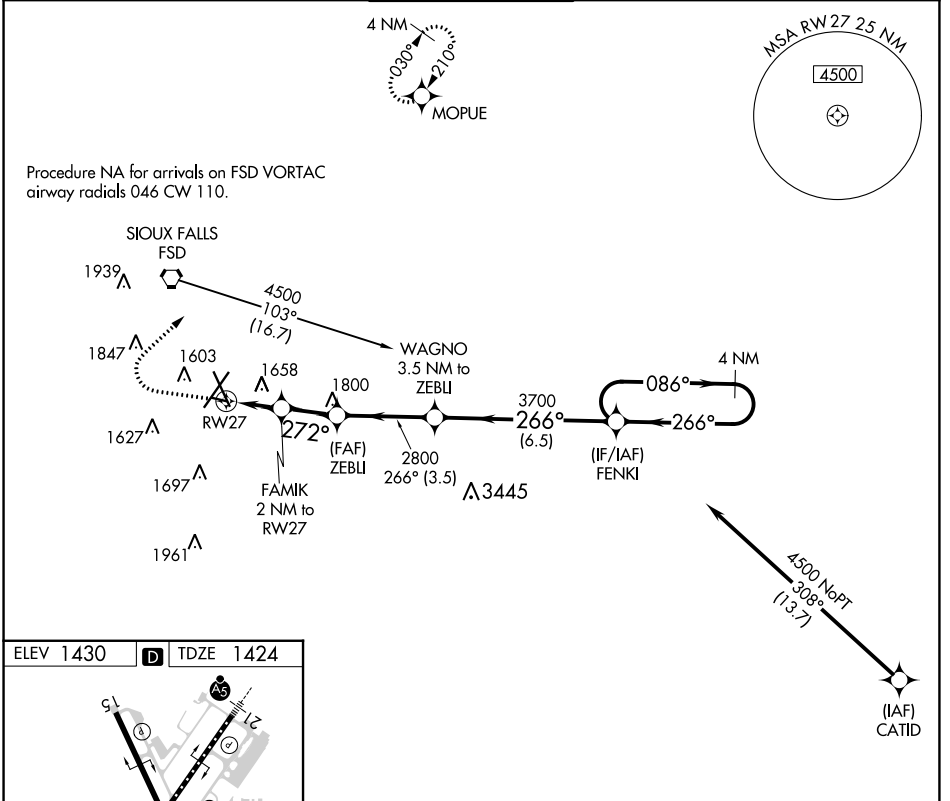
RNAV (GPS) RWY 27

JOE FOSS FLD (FSD)

RNP APCH.
 ASR Rwy 27 helicopter visibility reduction below 3/4 SM NA.
 -31°C

MISSED APPROACH: Climb to 2500, then climbing right turn to 4000 direct MOPIUE WP and hold.

ATIS 126.6	SIoux FALLS APP CON* 125.8 306.2	SIoux FALLS TOWER* 118.3 (CTAF) 257.8	GND CON 121.9 348.6	UNICOM 122.95
----------------------	--	---	-------------------------------	-------------------------



ELEV 1430	TDZE 1424						
<table border="1"> <tr> <td>2500</td> <td>4000</td> <td>MOPIUE</td> </tr> <tr> <td>↑</td> <td>↪</td> <td>✦</td> </tr> </table>		2500	4000	MOPIUE	↑	↪	✦
2500	4000	MOPIUE					
↑	↪	✦					
<table border="1"> <tr> <td> RWY 27 272° 2120 272° 2120 2 NM </td> <td> FAF ZEBLI 2800 266° (3.5) 3.15° TCH 40 2 NM </td> <td> WAGNO 3.5 NM to ZEBLI 3700 266° 6.5 NM </td> <td> FENKI 4 NM Holding Pattern 4500 086° 266° 4 NM </td> </tr> </table>		RWY 27 272° 2120 272° 2120 2 NM	FAF ZEBLI 2800 266° (3.5) 3.15° TCH 40 2 NM	WAGNO 3.5 NM to ZEBLI 3700 266° 6.5 NM	FENKI 4 NM Holding Pattern 4500 086° 266° 4 NM		
RWY 27 272° 2120 272° 2120 2 NM	FAF ZEBLI 2800 266° (3.5) 3.15° TCH 40 2 NM	WAGNO 3.5 NM to ZEBLI 3700 266° 6.5 NM	FENKI 4 NM Holding Pattern 4500 086° 266° 4 NM				
CATEGORY	A	B	C	D			
LNAV MDA	1960-1	536 (600-1)	NA				
CIRCLING	1960-1 530 (600-1)	1980-1 550 (600-1)	NA				

NC-1, 05 SEP 2024 to 03 OCT 2024

NC-1, 05 SEP 2024 to 03 OCT 2024