

MAATY FOUR ARRIVAL (RNAV) Transition Routes

TAMPA, FLORIDA

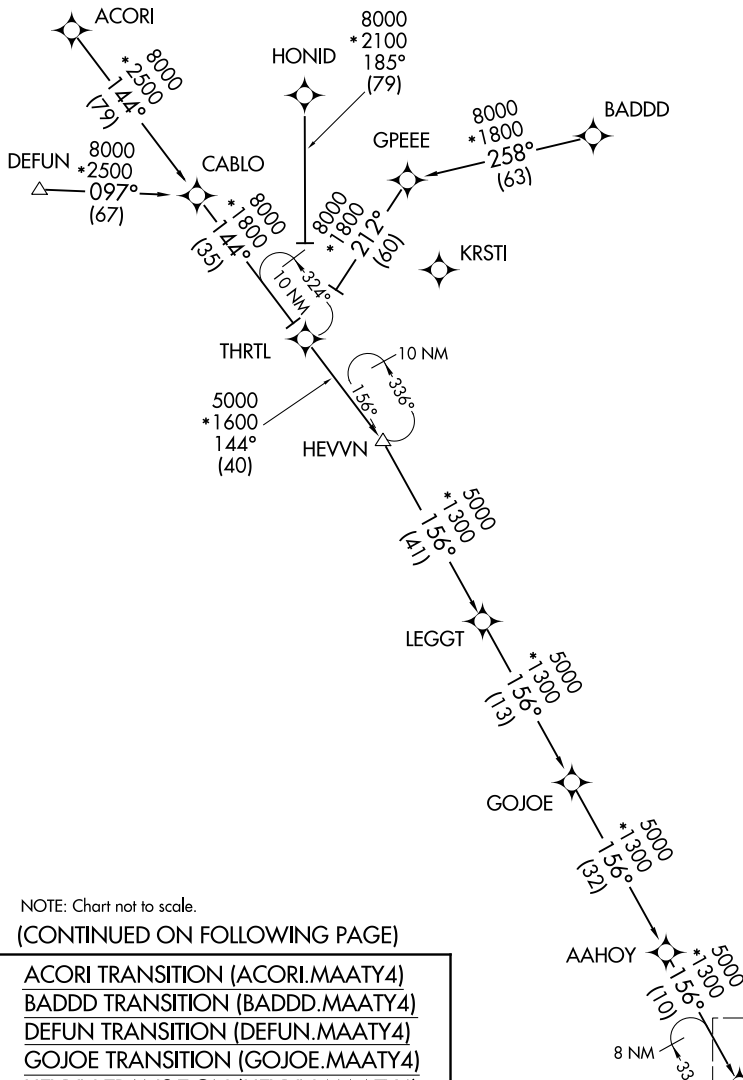
TAMPA APP CON  
118.8 239.3  
KMCF ATIS  
133.825 270.1  
LAL ATIS  
118.025  
TPA D-ATIS  
126.45  
VDF AWOS-3  
121.125

RNAV 1 - DME/DME/IRU or GPS.

RADAR required.

NOTE: Jet and turboprop aircraft only.

NOTE: Do not file BADDD, HEVVN or GOJOE Transitions - to be assigned by ATC.



NOTE: Chart not to scale.

(CONTINUED ON FOLLOWING PAGE)

- ACORI TRANSITION (ACORI.MAATY4)
- BADDD TRANSITION (BADDD.MAATY4)
- DEFUN TRANSITION (DEFUN.MAATY4)
- GOJOE TRANSITION (GOJOE.MAATY4)
- HEVVN TRANSITION (HEVVN.MAATY4)
- HONID TRANSITION (HONID.MAATY4)

See following page for arrival routes.

SE-3, 05 SEP 2024 to 03 OCT 2024

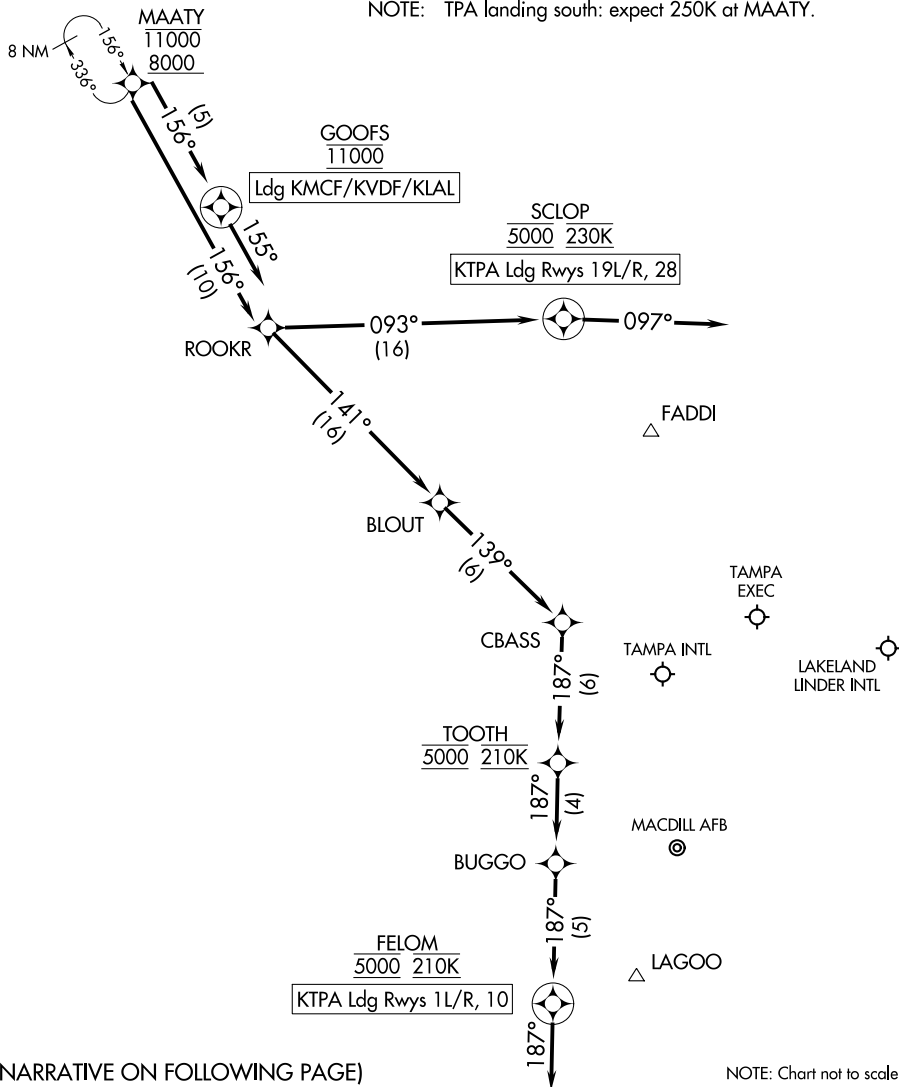
SE-3, 05 SEP 2024 to 03 OCT 2024

TAMPA APP CON  
 118.8 239.3  
 KMCF ATIS  
 133.825 270.1  
 LAL ATIS  
 118.025  
 TPA D-ATIS  
 126.45  
 VDF AWOS-3  
 121.125

RNAV 1 - DME/DME/IRU or GPS.

RADAR required.

NOTE: Jet and turboprop aircraft only.  
 NOTE: TPA landing south: expect 250K at MAATY.



(NARRATIVE ON FOLLOWING PAGE)

NOTE: Chart not to scale.

SE-3, 05 SEP 2024 to 03 OCT 2024

SE-3, 05 SEP 2024 to 03 OCT 2024

ARRIVAL ROUTE DESCRIPTION

KTPA: From MAATY on track 156° to ROOKR.

LANDING KTPA RUNWAYS 1L/R, 10: From ROOKR on track 141° to BLOUT, then on track 139° to CBASS, then on track 187° to cross TOOTH at 5000 and at 210K, then on track 187° to BUGGO, then on track 187° to cross FELOM at 5000 and at 210K, then on track 187°. Expect RADAR vectors to final approach course.

LANDING KTPA RUNWAYS 19L/R, 28: From ROOKR on track 093° to cross SCLOP at 5000 and at 230K, then on track 097°. Expect RADAR vectors to final approach course.

LANDING KMCF/KVDF/KLAL: From MAATY on track 156° to cross GOOFS at 11000, then on heading 155°. Expect RADAR vectors to final approach course.

SE-3, 05 SEP 2024 to 03 OCT 2024

SE-3, 05 SEP 2024 to 03 OCT 2024