

# ILS or LOC RWY 31

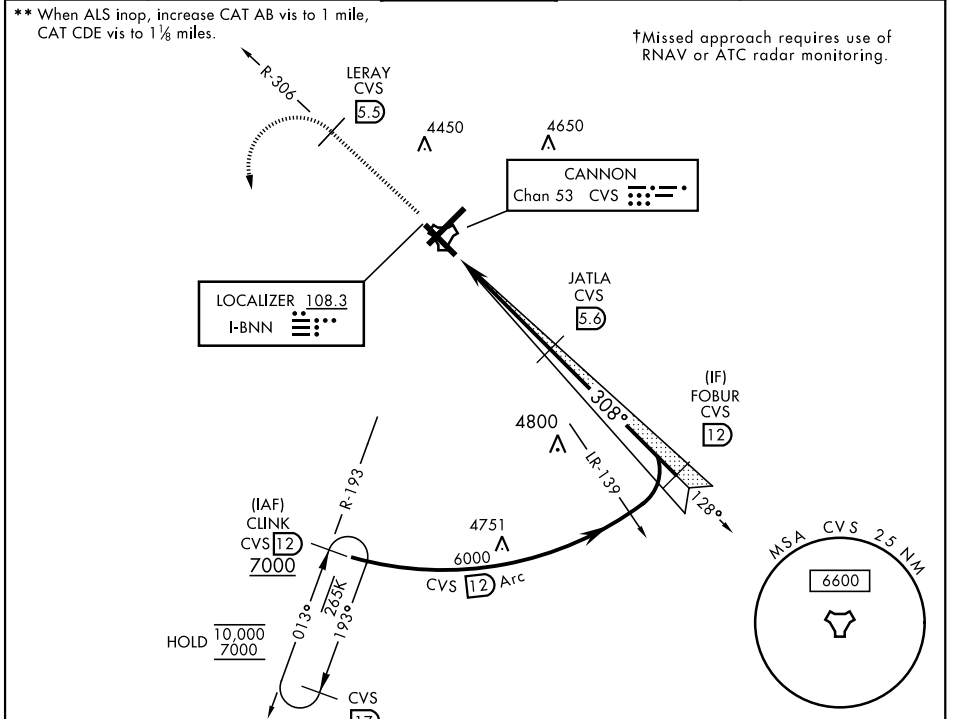
LOC I-BNN <b>108.3</b>	APCH CRS <b>308°</b>	Rwy Idg <b>8196</b>
		TDZE <b>4270</b>
		Arprt Elev <b>4295</b>

AL-512 [USAF]

CANNON AFB (KCVS)

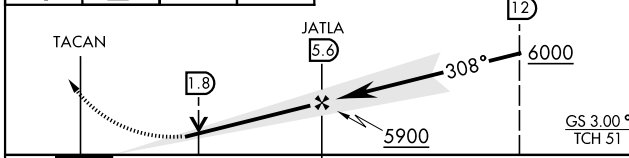
ATC RADAR or DME required.	SSALR <b>(A3)</b>	† MISSED APPROACH: Climb to 6000 out CVS TACAN R-306 to 5.5 DME (LERAY) then turn left climbing to 7000 intercept CVS R-193 to 12 DME (CLINK) and hold.
* When ALS inop, increase vis to ¼ mile.		

ATIS <b>119.1 269.9</b>	CANNON APP CON <b>118.425 352.1</b>	CANNON TOWER <b>120.4 270.25</b>	GND CON <b>121.9 275.8</b>	CLNC DEL <b>120.2 293.225</b>
----------------------------	--	-------------------------------------	-------------------------------	----------------------------------



EMERG SAFE ALT 100 NM 9000

6000	LERAY CVS R-306 (5.5)	7000	CLINK CVS R-193 (12)	VGSI TCH (41') and the procedure TCH (51') is greater than 3'.
------	-----------------------	------	----------------------	--



CATEGORY	A	B	C	D	E
S-ILS 31*	4470-½		200	(200-½)	
S-LOC 31**	4660-½ 390 (400-½)		4660-5/8 390 (400-5/8)		
CIRCLING	4840-1 545 (600-1)		4860-1½ 565 (600-1½)	5000-2¼ 705 (800-2¼)	5020-2½ 725 (800-2½)

ELEV 4295	TDZE 4270
-----------	-----------

HIRL all rwys					
FAF to MAP 4.9 NM					
Knots	60	90	120	150	180
Min:Sec	4:54	3:16	2:27	1:58	1:38

# ILS or LOC RWY 31

SW-1, 05 SEP 2024 to 03 OCT 2024

SW-1, 05 SEP 2024 to 03 OCT 2024