

GPS-B

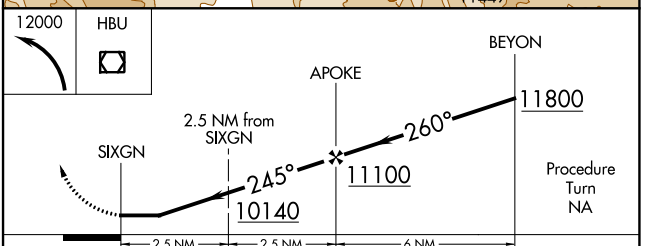
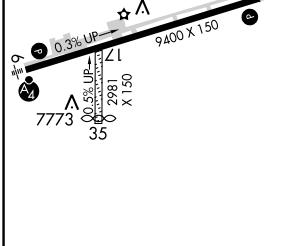
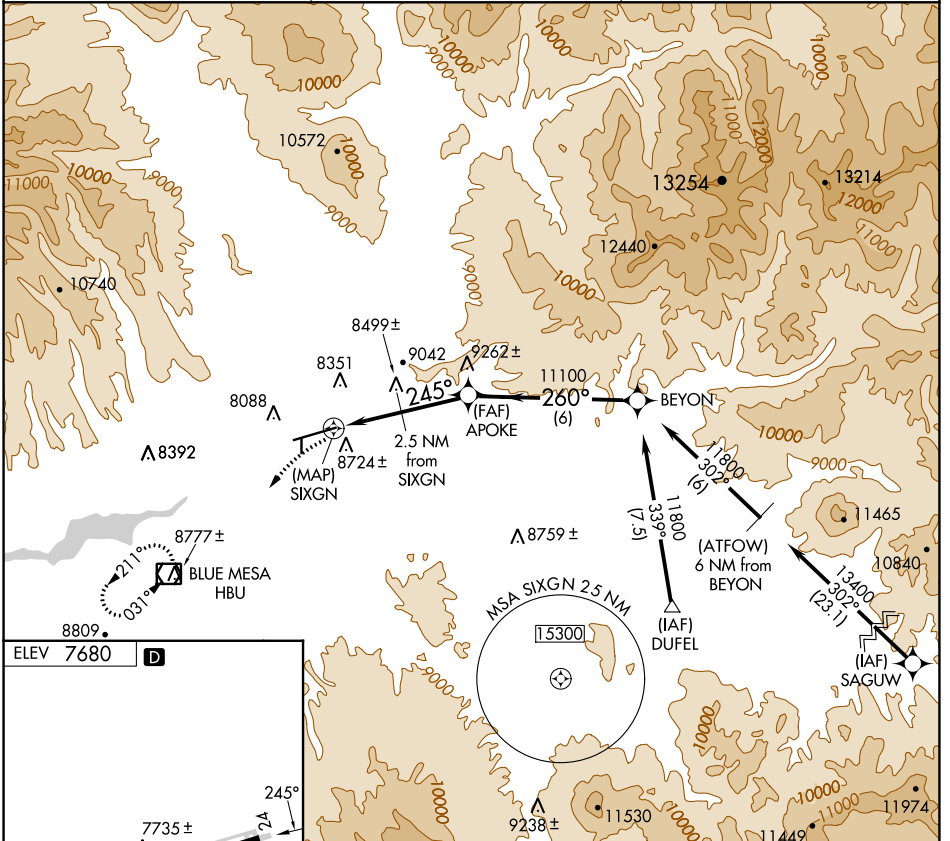
GUNNISON-CRESTED BUTTE RGNL (GUC)

APP CRS	Rwy Idg	N/A
245°	TDZE	N/A
	Apt Elev	7680

Procedure not authorized when airport closed except by prior arrangement. DME/DME RNP-0.3 NA.
 Circling NA to Rwy 17 and 35.

MISSED APPROACH: Climbing left turn to 12000 direct HBU VOR/DME and hold.

AWOS-3PT 135.075	DENVER CENTER 124.5 350.25	UNICOM 122.7 (CTAF)
----------------------------	--------------------------------------	-------------------------------



CATEGORY	A	B	C	D
CIRCLING	9180-1¼ 1500 (1500-1¼)	9180-1½ 1500 (1500-1½)	9540-3 1860 (1900-3)	10040-3 2360 (2400-3)

GPS-B

SW-1, 05 SEP 2024 to 03 OCT 2024

SW-1, 05 SEP 2024 to 03 OCT 2024