

APP CRS 242°	Rwy Idg TDZE Apt Elev	9400 7680 7680
------------------------	-----------------------------	---

RNAV (RNP) RWY 24

GUNNISON-CRESTED BUTTE RGNL (GUC)

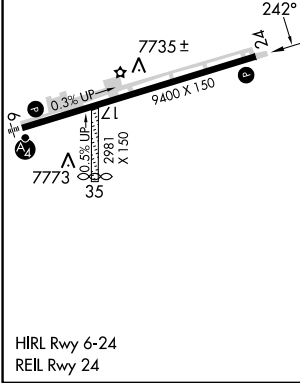
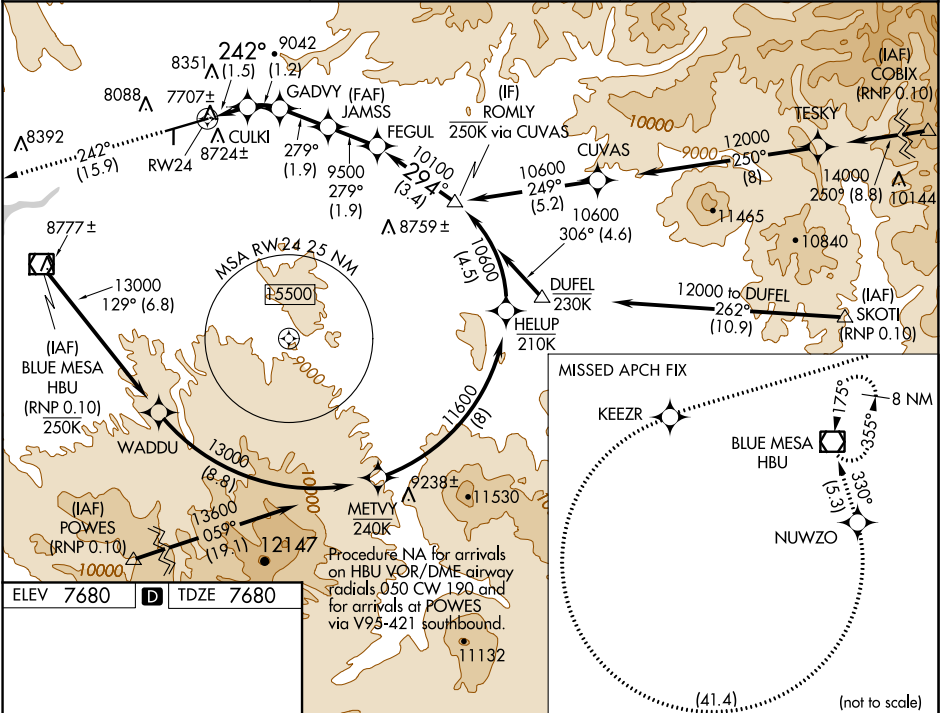
RF and GPS required.
 When local altimeter setting not received, procedure NA.
 Procedure NA for aircraft with wingspan greater than 136 feet.
 For uncompensated Baro-VNAV systems, procedure NA below -29°C (-20°F) or above 24°C (75°F).
 When VGSI inoperative, procedure NA at night.
 Missed approach requires minimum climb of 425 feet per NM to 9000.

MISSED APPROACH: Climb to 14000 on track 242° to KEEZR, and left turn to NUWZO, and on track 330° to HBU VOR/DME and hold.

AWOS-3PT
135.075

DENVER CENTER
124.5 350.25

UNICOM
122.7 (CTAF)



ELEV 7680	TDZE 7680	Procedure NA for arrivals on HBU VOR/DME airway radials 050 CW 190 and for arrivals at POWES via V95-421 southbound.	
14000	KEEZR	NUWZO	VGSI and RNAV glidepath not coincident (VGSI Angle 3.60/TCH 71).
tr 242°			
RWY 24		ROMLY	
	CULKI	GADVY	JAMSS
	8320	8776	9500
			FEGUL
			10100
			10600
			Procedure Turn NA GP 3.60° TCH 65
CATEGORY		D	
RNP 0.10 DA		7989-1 309 (400-1)	

AUTHORIZATION REQUIRED

SW-1, 05 SEP 2024 to 03 OCT 2024

SW-1, 05 SEP 2024 to 03 OCT 2024