

VOR/DME HBU 114.9 Chan 96	APP CRS 031°	Rwy Ldg TDZE Apt Elev 7680	N/A N/A 7680
---	------------------------	---	---------------------------

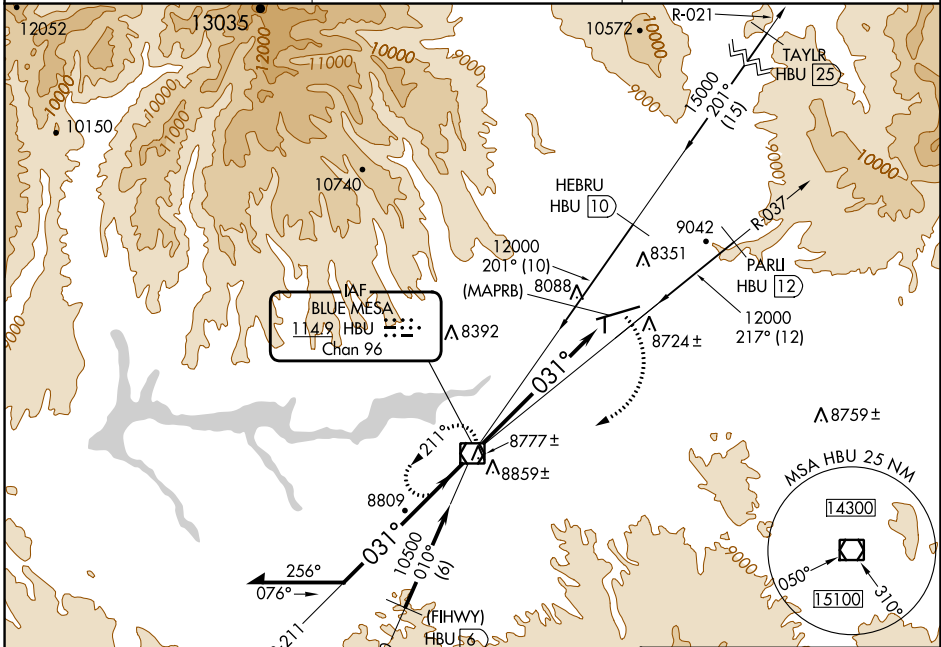
VOR or GPS-A

GUNNISON-CRESTED BUTTE RGNL (GUC)

Procedure NA when airport closed except by prior arrangement.
Procedure NA when airport closed except by prior arrangement.
 Circling NA to Rws 17 and 35.

MISSED APPROACH: Climbing right turn to 12000 direct HBU VOR/DME and hold.

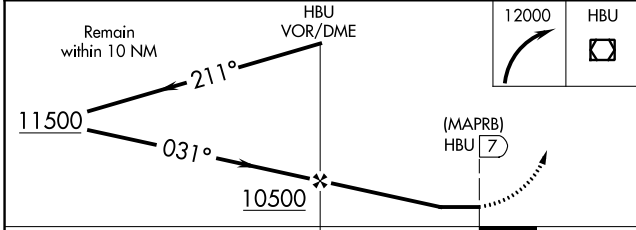
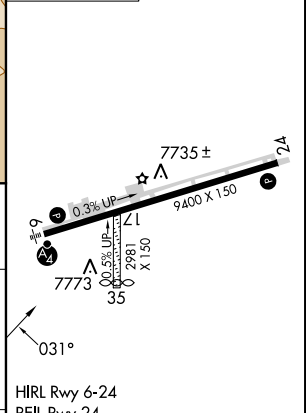
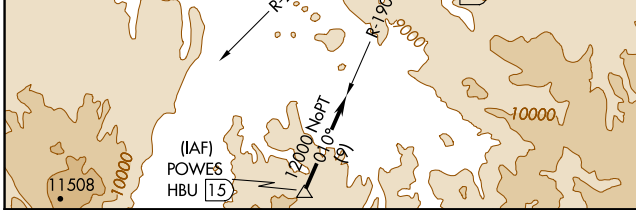
AWOS-3PT 135.075	DENVER CENTER 124.5 350.25	UNICOM 122.7 (CTAF)
----------------------------	--------------------------------------	-------------------------------



SW-1, 05 SEP 2024 to 03 OCT 2024

SW-1, 05 SEP 2024 to 03 OCT 2024

ELEV **7680** **D**



CATEGORY	FAF to MAP 7 NM					
	A	B	C	D		
CIRCLING	9260-2 1580 (1600-2)	9340-2 1660 (1700-2)	9540-3 1860 (1900-3)	10040-3 2360 (2400-3)		
	Knots	60	90	120	150	180
	Min:Sec	7:00	4:40	3:30	2:48	2:20