

LOC/DME I-ACV 109.5 Chan 32	APP CRS 316°	Rwy Idg TDZE Apt Elev	5846 221 222
---	------------------------	-----------------------------	---

ILS or LOC RWY 32

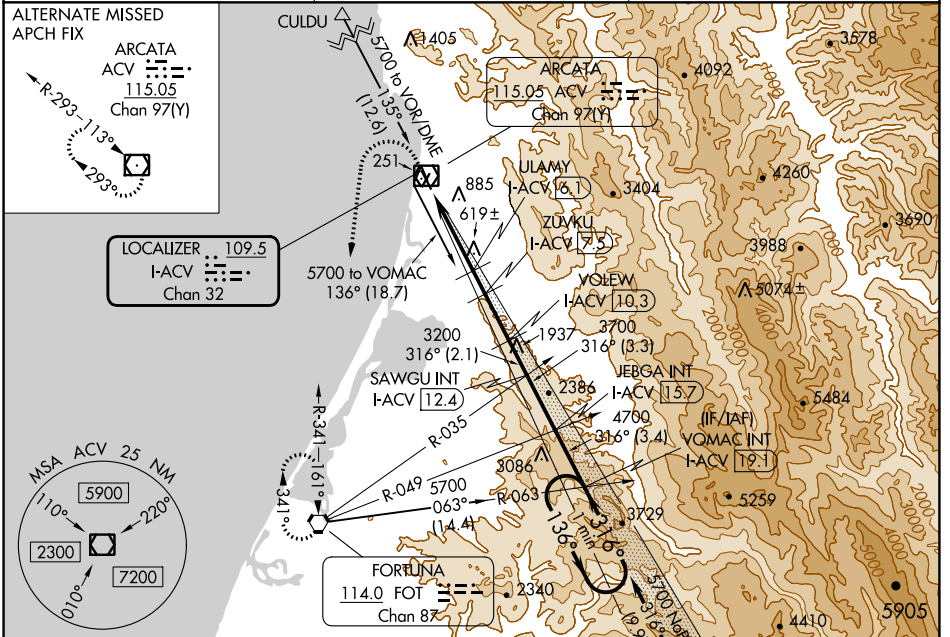
CALIFORNIA REDWOOD COAST-HUMBOLDT COUNTY (ACV)

NA Circling NA northeast of Rwy 14-32. DME required.

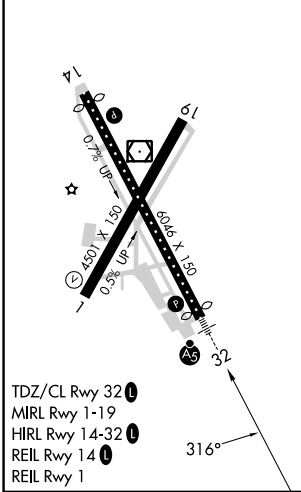
MALSR
AS

MISSED APPROACH: Climb to 800 then climbing left turn to 3000 direct FOT VORTAC and hold.

ASOS 118.525	SEATTLE CENTER 124.85 306.3	UNICOM 123.0 (CTAF)
-------------------------------	--	--------------------------------------



ELEV 222	D	TDZE 221
----------	----------	----------



800 3000 FOT

Use I-ACV DME when on the localizer course. VGSI and ILS glidepath not coincident (VGSI Angle 3.00/TCH 43).

VOMAC I-ACV 19.1 One Minute Holding Pattern

*LOC only

I-ACV 1.1, *I-ACV 3, ULMY I-ACV 6.1, ZUVKU I-ACV 7.5, VOLEW I-ACV 10.3, JEBGA I-ACV 15.7, SAWGU I-ACV 12.4

3200 4700 3700

1860* 2320* 3200

136° 316° 5700

GS 3.00° TCH 47

CATEGORY	A	B	C	D
S-ILS 32	441/18 220 (300-1/2)			
S-LOC 32	880/24	659 (700-1/2)	880-1 3/8	659 (700-1 3/8)
C CIRCLING	880-1	658 (700-1)	880-1 7/8	880-2
			658 (700-1 7/8)	658 (700-2)

SW-2, 05 SEP 2024 to 03 OCT 2024

SW-2, 05 SEP 2024 to 03 OCT 2024