

# BLEWE FIVE ARRIVAL

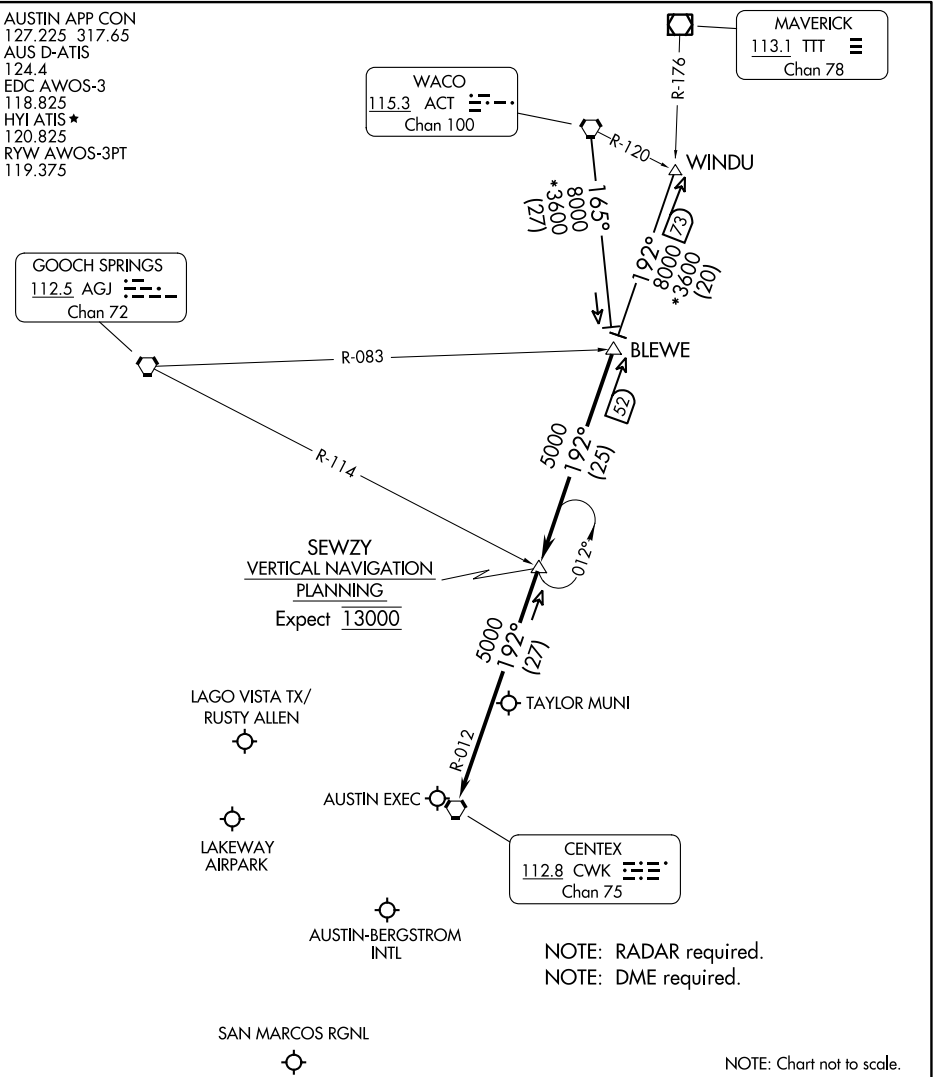
AUSTIN, TEXAS

AUSTIN APP CON  
 127.225 317.65  
 AUS D-ATIS  
 124.4  
 EDC AWOS-3  
 118.825  
 HYI ATIS \*  
 120.825  
 RYW AWOS-3PT  
 119.375

MAVERICK  
 113.1 TTT  
 Chan 78

WACO  
 115.3 ACT  
 Chan 100

GOOCH SPRINGS  
 112.5 AGJ  
 Chan 72



NOTE: RADAR required.  
 NOTE: DME required.

NOTE: Chart not to scale.

## ARRIVAL ROUTE DESCRIPTION

WACO TRANSITION (ACT.BLEWE5): From over ACT VORTAC on ACT R-165 to BLEWE. Thence . . . .

WINDU TRANSITION (WINDU.BLEWE5): From over WINDU on CWK R-012 to BLEWE. Thence . . . .

. . . .From over BLEWE on CWK R-012 to SEWZY, then on CWK R-012 to CWK VORTAC. Expect vectors to final approach course at or prior to CWK VORTAC.

SC-3, 05 SEP 2024 to 03 OCT 2024

SC-3, 05 SEP 2024 to 03 OCT 2024

# BLEWE FIVE ARRIVAL

AUSTIN, TEXAS