

ILS Z or LOC Z RWY 18

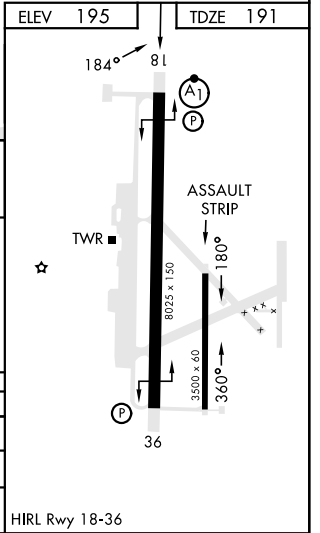
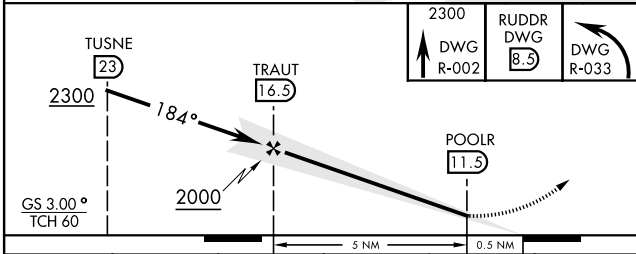
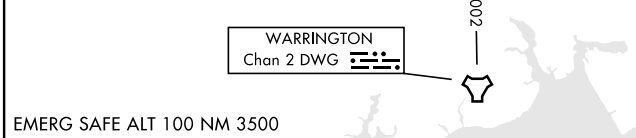
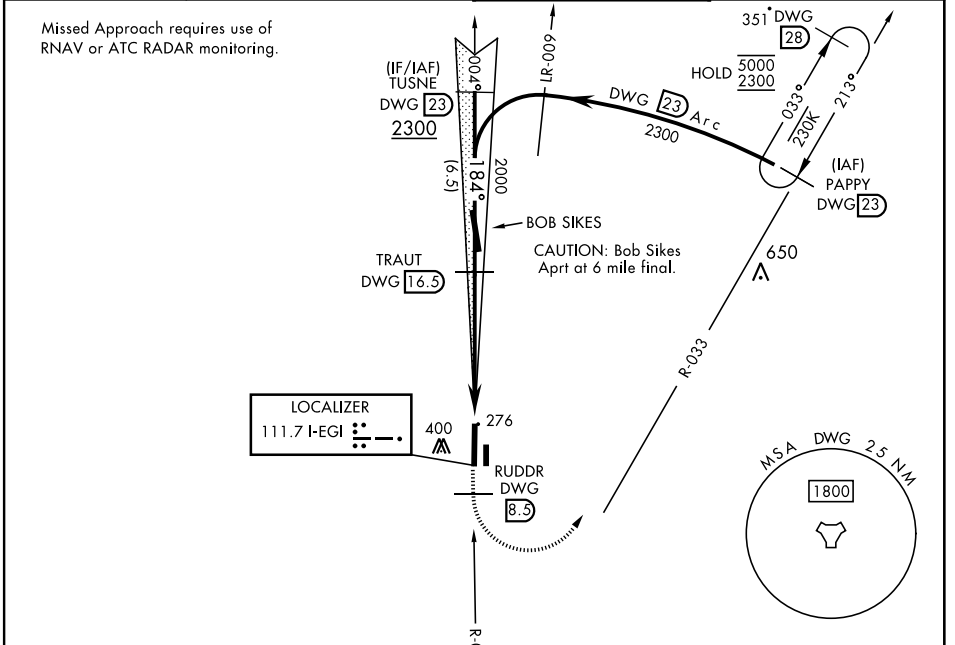
LOC I-EGI 111.7	APCH CRS 184°	Rwy Ldg TDZE 8025 Arprt Elev 191 195	AL-699 [USAF]	DUKE FLD (EGLIN AF AUX NR3) (KEGI)
---------------------------	-------------------------	---	---------------	------------------------------------

* When ALS inop, increase RVR to 40, vis to ¼ mile.
 ** When ALS inop, increase RVR to 55, vis to 1 mile.

ALS-1

MISSED APPROACH: Climb on DWG R-002 to 8.5 DME (RUDDR), then climbing left turn to 2300 intercept DWG R-033 to 23 DME (PAPPY) and hold.

ATIS ★ 244.575	EGLIN APP CON 125.1 281.45 (271°-089°) 132.1 360.6 (090°-270°)	TOWER ★ 133.2 290.425	GND CON 123.25 251.125
--------------------------	--	---------------------------------	----------------------------------



EMERG SAFE ALT 100 NM 3500	2300 DWG R-002	RUDDR DWG 8.5	DWG R-033		
CATEGORY	A	B	C	D	E
S-ILS 18 *	391/24		200	(200-½)	
S-LOC 18 **	540/24	349 (400-½)	540/30	349 (400-¾)	
CIRCLING	660-1	700-1	700-1½	760-2	780-2
	465 (500-1)	505 (600-1)	505 (600-1½)	565 (600-2)	585 (600-2)

ILS Z or LOC Z RWY 18

SE-3, 05 SEP 2024 TO 03 OCT 2024

SE-3, 05 SEP 2024 TO 03 OCT 2024