

VORTAC CEW 115.9 Chan 106	APCH CRS 140°	Rwy Idg THRE Arprt Elev NA NA 195
---	-------------------------	---

[USAF]

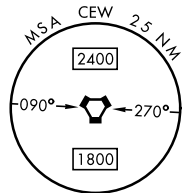
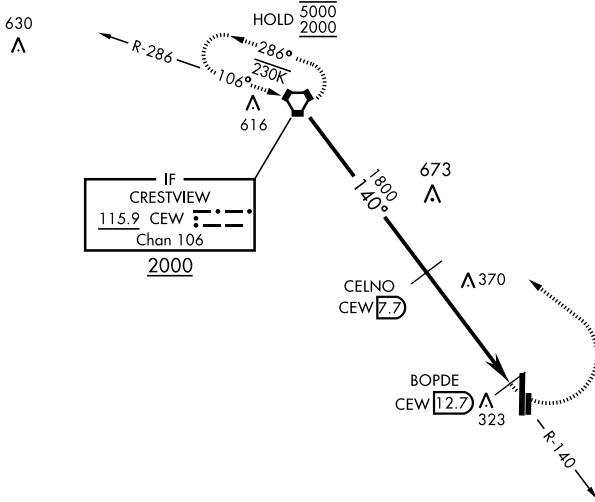
DUKE FLD (EGLIN AF AUX NR3) (KEGI)

DME required

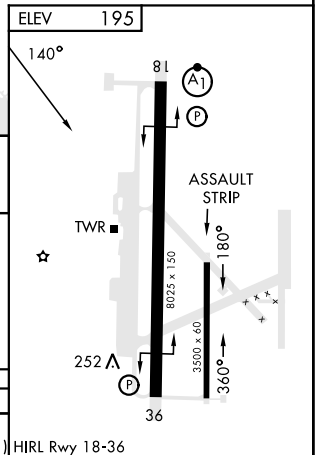
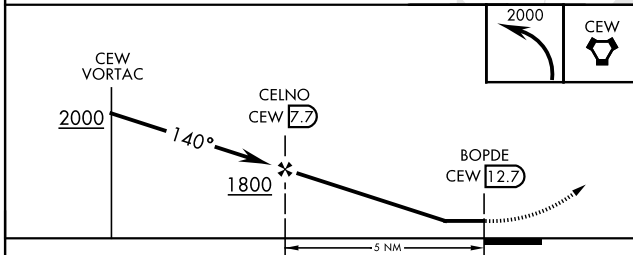
MISSED APPROACH: Climbing left turn to 2000 direct CEW VORTAC and hold.

ATIS ★ 244.575	EGLIN APP CON 125.1 281.45 (271° - 089°) 132.1 360.6 (090° - 270°)	DUKE TOWER ★ 133.2 290.425	GND CON 123.25 251.125
--------------------------	--	--------------------------------------	----------------------------------

358



EMERG SAFE ALT 100 NM 3500



CATEGORY	A	B	C	D	E	
CIRCLING	680-1	485 (500-1)	680-1½ 485 (500-1½)	820-2 625 (700-2)	820-2¼ 625 (700-2¼)	HIRL Rwy 18-36

SE-3, 05 SEP 2024 to 03 OCT 2024

SE-3, 05 SEP 2024 to 03 OCT 2024