

BHHIA THREE ARRIVAL (RNAV) (BHHIA, BHHIA3) 03NOV22

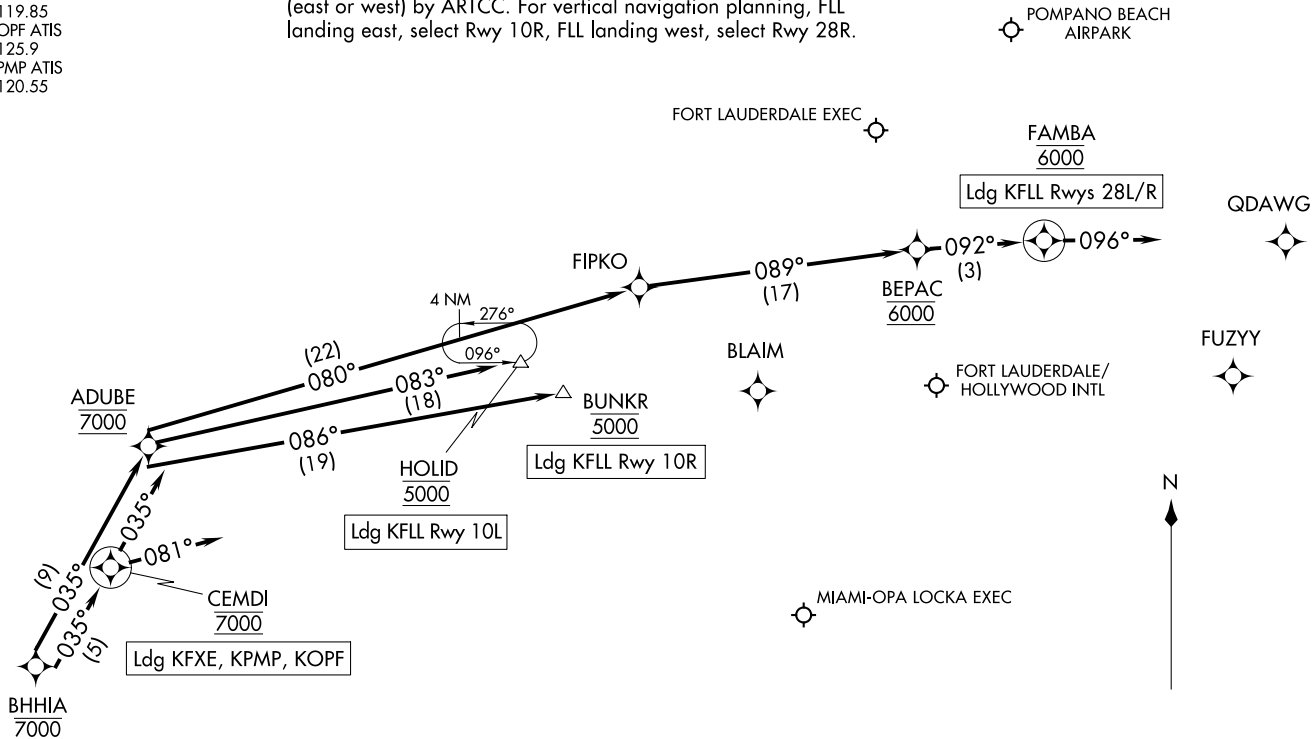
BHHIA THREE ARRIVAL (RNAV) Arrival Routes

FORT LAUDERDALE, FLORIDA

MIAMI APP CON
120.5 350.225
FLL D-ATIS
135.0
FXE ATIS
119.85
OPF ATIS
125.9
PMP ATIS
120.55

NOTE: Jet aircraft only.
NOTE: Expect "descend via" clearance and landing direction (east or west) by ARTCC. For vertical navigation planning, FLL landing east, select Rwy 10R, FLL landing west, select Rwy 28R.

RNAV 1-DME/DME/IRU or GPS.
RADAR required.



(NARRATIVE ON FOLLOWING PAGE)

NOTE: Chart not to scale.

(BHHIA, BHHIA3) 22307

BHHIA THREE ARRIVAL (RNAV) Arrival Routes

FORT LAUDERDALE, FLORIDA

AL-744 (FAA)

ARRIVAL ROUTE DESCRIPTION

KFLL: From BHHIA on track 035° to cross ADUBE at 7000.

LANDING KFLL RUNWAY 10L: From ADUBE on track 083° to cross HOLID at 5000. Expect ILS or LOC Rwy 10L approach.

LANDING KFLL RUNWAY 10R: From ADUBE on track 086° to cross BUNKR at 5000. Expect ILS or LOC Rwy 10R approach.

LANDING KFLL RUNWAYS 28L/R: From ADUBE on track 080° to FIPKO, then on track 089° to cross BEPAC at 6000, then on track 092° to cross FAMBA at 6000, then on track 096°. Expect RADAR vectors to final approach course.

LANDING KFXE/KPMP: From BHHIA on track 035° to cross CEMDI at 7000, then on track 035°. Expect RADAR vectors to final approach course.

LANDING KOPF: From BHHIA on track 035° to cross CEMDI at 7000, then on heading 081°. Expect RADAR vectors to final approach course.

SE-3, 05 SEP 2024 to 03 OCT 2024

SE-3, 05 SEP 2024 to 03 OCT 2024