

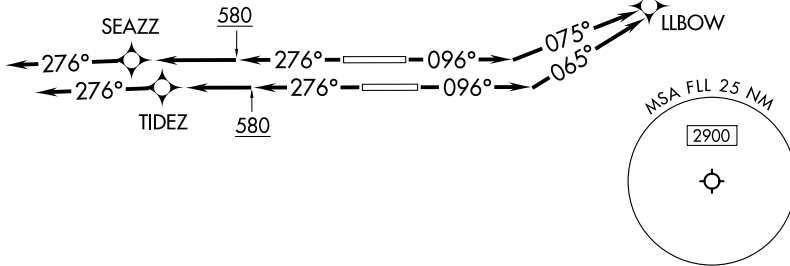
**TOP ALTITUDE:
ASSIGNED BY ATC**

RNAV-1 DME/DME/IRU or GPS.
RADAR required.

MIAMI DEP CON
119.45 290.325 (Departing West)
126.05 251.1 (Departing East)
D-ATIS
135.0
CLNC DEL
128.4
CPDLC
GND CON
121.4
FORT LAUDERDALE TOWER
119.3 257.8



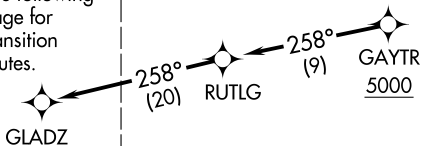
NOTE: Jet aircraft only.
NOTE: Accelerate to 250K until leaving 10000, if unable, advise ATC.
NOTE: SHAQQ and BAGGS transitions ATC assigned except aircraft departing MIA.



TAKEOFF MINIMUMS

Rwys 10L/R, 28L/R: Standard with minimum climb of 500'/NM to 580.

See following page for transition routes.



(CONTINUED ON FOLLOWING PAGE)

NOTE: Chart not to scale.

GLADZ THREE DEPARTURE (RNAV)
(GLADZ3.GLADZ) 21MAR24

Departure Routes

FORT LAUDERDALE, FLORIDA

FORT LAUDERDALE/HOLLYWOOD INTL (FTL)

(GLADZ3.GLADZ) 24081
GLADZ THREE DEPARTURE (RNAV)

Departure Routes

FORT LAUDERDALE, FLORIDA

A1-744 (FAA)

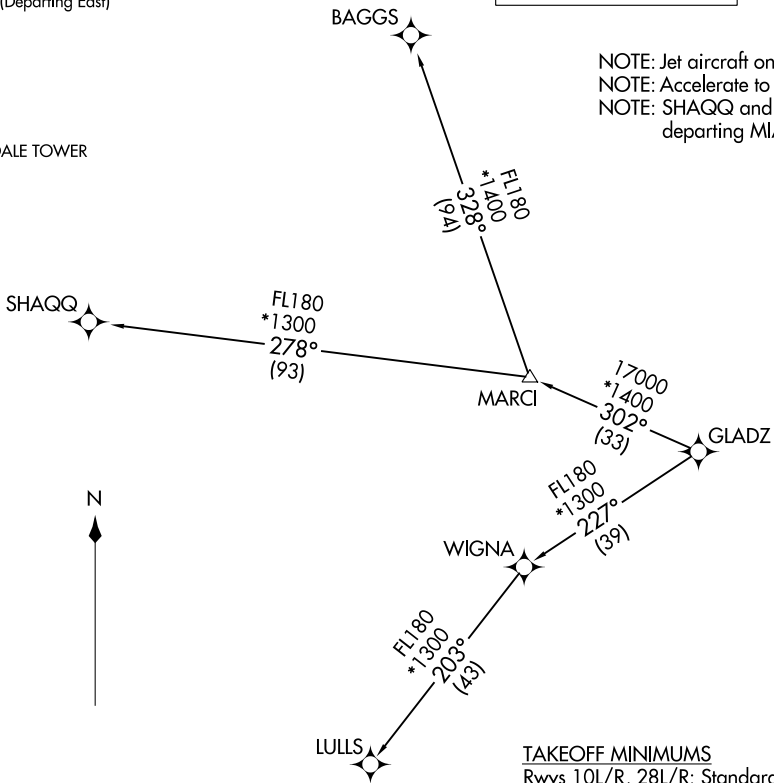
FORT LAUDERDALE/HOLLYWOOD INTL (FTL)

**TOP ALTITUDE:
ASSIGNED BY ATC**

RNAV-1 DME/DME/IRU or GPS.
RADAR required.

MIAMI DEP CON
119.45 290.325 (Departing West)
126.05 251.1 (Departing East)
D-ATIS
135.0
CLNC DEL
128.4
CPDLC
GND CON
121.4
FORT LAUDERDALE TOWER
119.3 257.8

NOTE: Jet aircraft only.
NOTE: Accelerate to 250K until leaving 10000, if unable, advise ATC.
NOTE: SHAQQ and BAGGS transitions ATC assigned except aircraft departing MIA.



TAKEOFF MINIMUMS
Rwys 10L/R, 28L/R: Standard with minimum climb of 500'/NM to 580.

(CONTINUED ON FOLLOWING PAGE)

NOTE: Chart not to scale.

GLADZ THREE DEPARTURE (RNAV) Transition Routes FORT LAUDERDALE, FLORIDA
(GLADZ3.GLADZ) 21MAR24 FORT LAUDERDALE/HOLLYWOOD INTL (FLL)

(GLADZ3.GLADZ) 24081 AL-744 (FAA) FORT LAUDERDALE/HOLLYWOOD INTL (FLL)
GLADZ THREE DEPARTURE (RNAV) Transition Routes FORT LAUDERDALE, FLORIDA



DEPARTURE ROUTE DESCRIPTION

SEE ADDITIONAL REQUIREMENTS ON AAUP

TAKEOFF RUNWAY 10L: Climb on heading 096° to intercept course 075° to LLBOW, then on track 026° to cross ROOOM at or above 4000, then on track 347° to YOLOO, then on track 298° to LRICK, then on heading 276°, for vectors to cross GAYTR at or above 5000, thence. . .

TAKEOFF RUNWAY 10R: Climb on heading 096° to intercept course 065° to LLBOW, then on track 026° to cross ROOOM at or above 4000, then on track 347° to YOLOO, then on track 298° to LRICK, then on heading 276°, for vectors to cross GAYTR at or above 5000, thence. . .

TAKEOFF RUNWAY 28L: Climb on heading 276° to 580, then direct to TIDEZ, then on track 276°, for vectors to cross GAYTR at or above 5000, thence. . .

TAKEOFF RUNWAY 28R: Climb on heading 276° to 580, then direct to SEAZZ, then on track 276°, for vectors to cross GAYTR at or above 5000, thence. . .

. . . on track 258° to RUTLG, then on track 258° to GLADZ, then on transition. Maintain ATC assigned altitude. Expect clearance to filed altitude 10 minutes after departure.

BAGGS TRANSITION (GLADZ3.BAGGS)

LULLS TRANSITION (GLADZ3.LULLS)

SHAQQ TRANSITION (GLADZ3.SHAQQ)

SE-3, 05 SEP 2024 to 03 OCT 2024

SE-3, 05 SEP 2024 to 03 OCT 2024