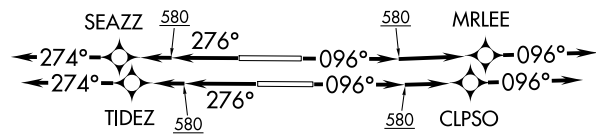
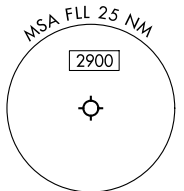


MAYNR TWO DEPARTURE (RNAV)
(MAYNR2, MAYNR) 21 MAR 24

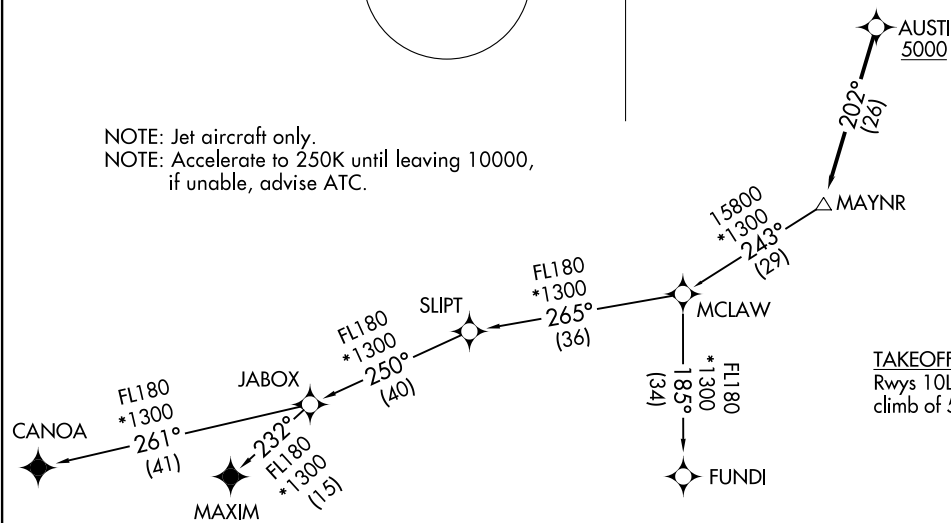
MIAMI DEP CON
119.45 290.325
D-ATIS
135.0
CLNC DEL
128.4
CPDLC
GND CON
121.4
EXECUTIVE TOWER
120.9 239.3
FORT LAUDERDALE TOWER
119.3 257.8
POMPAÑO BEACH TOWER★
125.4

RNAV1 - DME/DME/IRU or GPS.
From SLIPT to MAXIM RNAV 1- GPS.
From SLIPT to CANOA RNAV 1- GPS.
RADAR required.

**TOP ALTITUDE:
4000**



NOTE: Jet aircraft only.
NOTE: Accelerate to 250K until leaving 10000,
if unable, advise ATC.



TAKEOFF MINIMUMS
Rwys 10L/R, 28L/R: Standard with minimum
climb of 500'/NM to 580.

NOTE: Chart not to scale.

(CONTINUED ON FOLLOWING PAGE)

FORT LAUDERDALE, FLORIDA
FORT LAUDERDALE/HOLLYWOOD INTL (FLL)

(MAYNR2, MAYNR) 24081
MAYNR TWO DEPARTURE (RNAV)
AL-744 (FAA)
FORT LAUDERDALE/HOLLYWOOD INTL (FLL)
FORT LAUDERDALE, FLORIDA

MAYNR TWO DEPARTURE (RNAV)



DEPARTURE ROUTE DESCRIPTION SEE ADDITIONAL REQUIREMENTS ON AAUP

TAKEOFF RUNWAY 10L: Climb on heading 096° to 580, then direct MRLEE, then on track 096°, for vectors to cross AUSTI at or above 5000, thence. . . .

TAKEOFF RUNWAY 10R: Climb on heading 096° to 580, then direct CLPSO, then on track 096°, for vectors to cross AUSTI at or above 5000, thence. . . .

TAKEOFF RUNWAY 28L: Climb on heading 276° to 580, then direct TIDEZ, then on track 274°, for vectors to cross AUSTI at or above 5000, thence. . . .

TAKEOFF RUNWAY 28R: Climb on heading 276° to 580, then direct SEAZZ, then on track 274°, for vectors to cross AUSTI at or above 5000, thence. . . .

. . . . on track 202° to MAYNR, then on assigned transition, maintain ATC assigned altitude. Expect clearance to filed altitude within 10 minutes after departure.

CANOA TRANSITION (MAYNR2.CANOA)

FUNDI TRANSITION (MAYNR2.FUNDI)

MAXIM TRANSITION (MAYNR2.MAXIM)

SE-3, 05 SEP 2024 to 03 OCT 2024

SE-3, 05 SEP 2024 to 03 OCT 2024