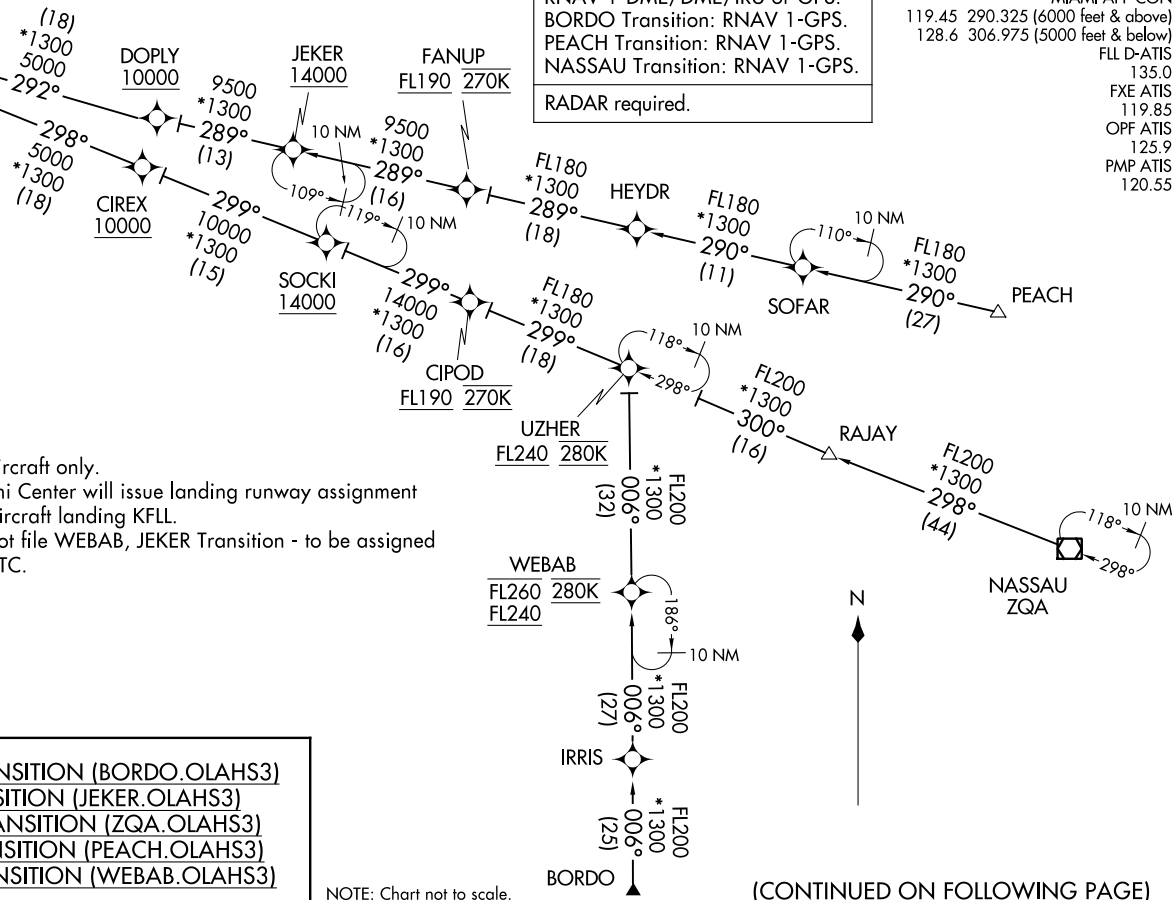
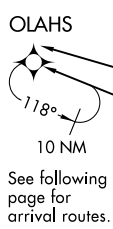


OLAHS THREE ARRIVAL (RNAV) (OLAHS.OLAHS3) 03NOV22

OLAHS THREE ARRIVAL (RNAV) Transition Routes

FORT LAUDERDALE, FLORIDA



RNAV 1-DME/DME/IRU or GPS.
BORDO Transition: RNAV 1-GPS.
PEACH Transition: RNAV 1-GPS.
NASSAU Transition: RNAV 1-GPS.
RADAR required.

MIAMI APP CON
119.45 290.325 (6000 feet & above)
128.6 306.975 (5000 feet & below)
FLL D-ATIS 135.0
FXE ATIS 119.85
OPF ATIS 125.9
PMP ATIS 120.55

- NOTE: Jet aircraft only.
- NOTE: Miami Center will issue landing runway assignment for aircraft landing KFLI.
- NOTE: Do not file WEBAB, JEKER Transition - to be assigned by ATC.

BORDO TRANSITION (BORDO.OLAHS3)
JEKER TRANSITION (JEKER.OLAHS3)
NASSAU TRANSITION (ZQA.OLAHS3)
PEACH TRANSITION (PEACH.OLAHS3)
WEBAB TRANSITION (WEBAB.OLAHS3)

NOTE: Chart not to scale.

(CONTINUED ON FOLLOWING PAGE)

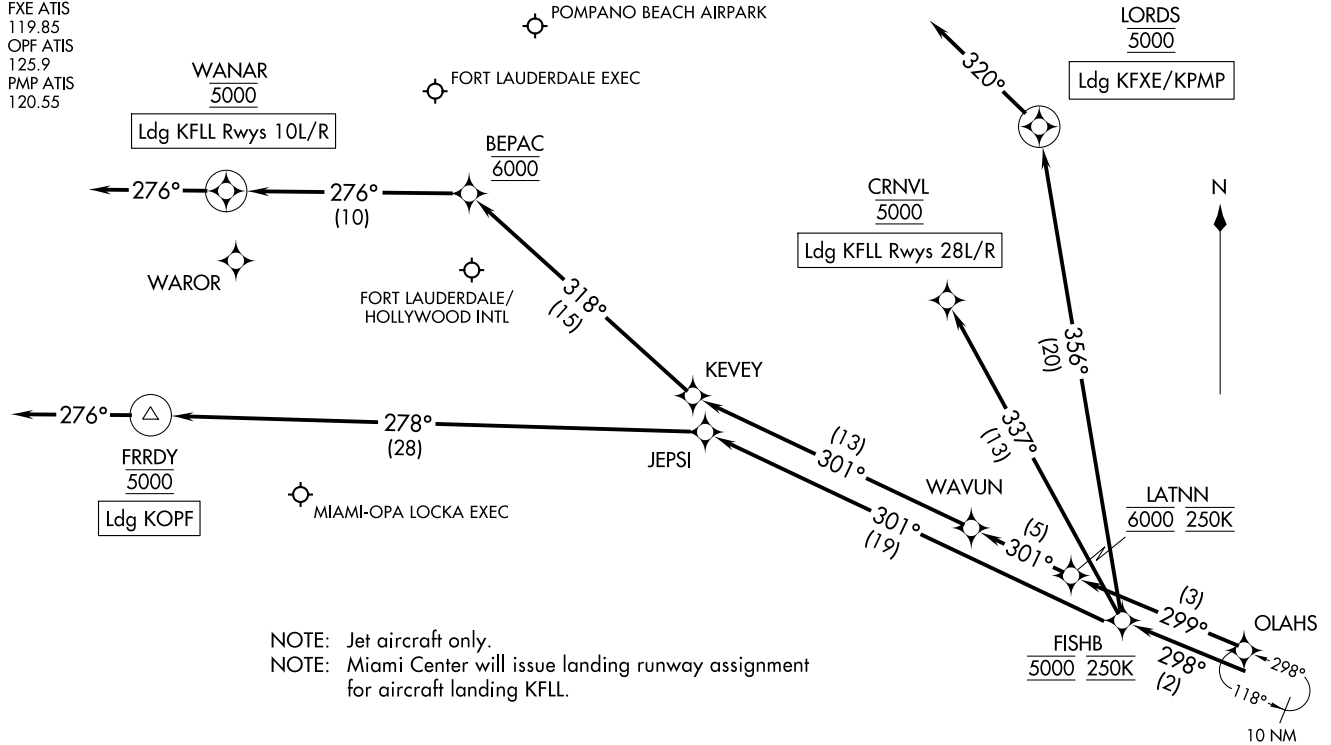
OLAHS THREE ARRIVAL (RNAV) 22207

AL-7/44 (FAA)

FORT LAUDERDALE, FLORIDA

RNAV 1-DME/DME/IRU or GPS.
RADAR required.

MIAMI APP CON
119.45 290.325 (6000 feet & above)
128.6 306.975 (5000 feet & below)
FLL D-ATIS
135.0
FXE ATIS
119.85
OPF ATIS
125.9
PMP ATIS
120.55



NOTE: Jet aircraft only.
NOTE: Miami Center will issue landing runway assignment for aircraft landing KFL.

(NARRATIVE ON FOLLOWING PAGE)

NOTE: Chart not to scale.

OLAHS THREE ARRIVAL (RNAV) Arrival Routes
(OLAHS, OLAHS3) 03NOV22
FORT LAUDERDALE, FLORIDA

(OLAHS, OLAHS3) 22307
AL-7/44 (FAA)
FORT LAUDERDALE, FLORIDA
Arrival Routes

ARRIVAL ROUTE DESCRIPTION

LANDING KFL RUNWAYS 10L/R: From OLAHS on track 299° to cross LATNN at 6000 and at 250K, then on track 301° to WAVUN, then on track 301° to KEVEY, then on track 318° to cross BEPAC at 6000, then on track 276° to cross WANAR at 5000, then on track 276°. Expect RADAR vectors to final approach course.

LANDING KFL RUNWAYS 28L/R: From OLAHS on track 298° to cross FISHB at 5000 and at 250K, then on track 337° to cross CRNVL at 5000.

LANDING KFXE/KPMP: From OLAHS on track 298° to cross FISHB at 5000 and at 250K, then on track 356° to cross LORDS at 5000, then on heading 320°. Expect RADAR vectors to final approach course.

LANDING KOPF: From OLAHS on track 298° to cross FISHB at 5000 and at 250K, then on track 301° to JEPSI, then on track 278° to cross FRRDY at 5000, then on heading 276°. Expect RADAR vectors to final approach course.

SE-3, 05 SEP 2024 to 03 OCT 2024

SE-3, 05 SEP 2024 to 03 OCT 2024