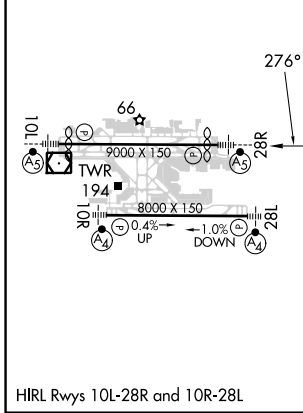
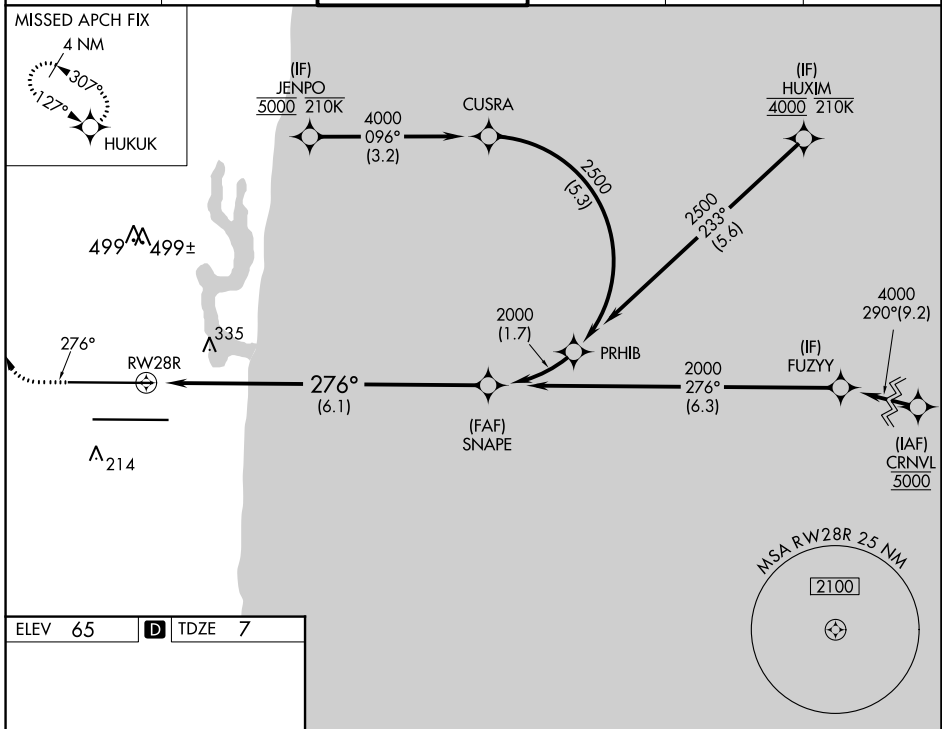


APP CRS	Rwy Idg	8394
276°	TDZE	7
	Apt Elev	65

RNAV (RNP) Z RWY 28R

FORT LAUDERDALE/HOLLYWOOD INTL (FLL)

RNP AR APCH - GPS. RADAR required.		MALSR	MISSED APPROACH: Climb to 800 then climbing right turn to 4000 direct HUKUK and hold, continue climb-in-hold to 4000.		
▼ Simultaneous approach authorized. For uncompensated Baro-VNAV systems, procedure NA below 7°C or above 54°C. For inop ALS, increase RNP 0.15 visibility to RVR 5500 and increase RNP 0.30 visibility to 1¾ SM.					
D-ATIS	MIAMI APP CON	FORT LAUDERDALE TOWER	GND CON	CLNC DEL	CPDLC
135.0	133.775 285.6	119.3 257.8	121.4	128.4	



ELEV	65	D	TDZE	7
800	4000	HUKUK	VGSI and RNAV glidepath not coincident (VGSI Angle 3.00/TCH 69).	
See planview for multiple IF locations.				
RWY 28R		SNAPE		2000
6.1 NM		276°		2000
				GP 3.00° TCH 49
CATEGORY	A	B	C	D
RNP 0.15 DA		362/40	355 (300-¾)	
RNP 0.30 DA		618-1⅓	611 (600-1⅓)	

SE-3, 05 SEP 2024 to 03 OCT 2024

SE-3, 05 SEP 2024 to 03 OCT 2024

AUTHORIZATION REQUIRED