


LOC/DME I-LIH <b>110.9</b> Chan 46	APP CRS <b>349°</b>	Rwy Idg 6500	TDZE 96
		Apt Elev 152	

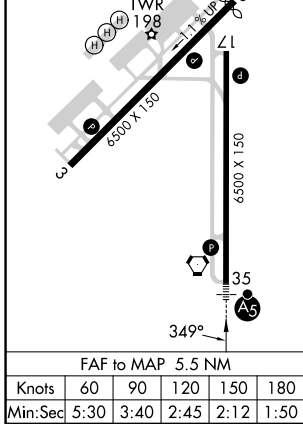
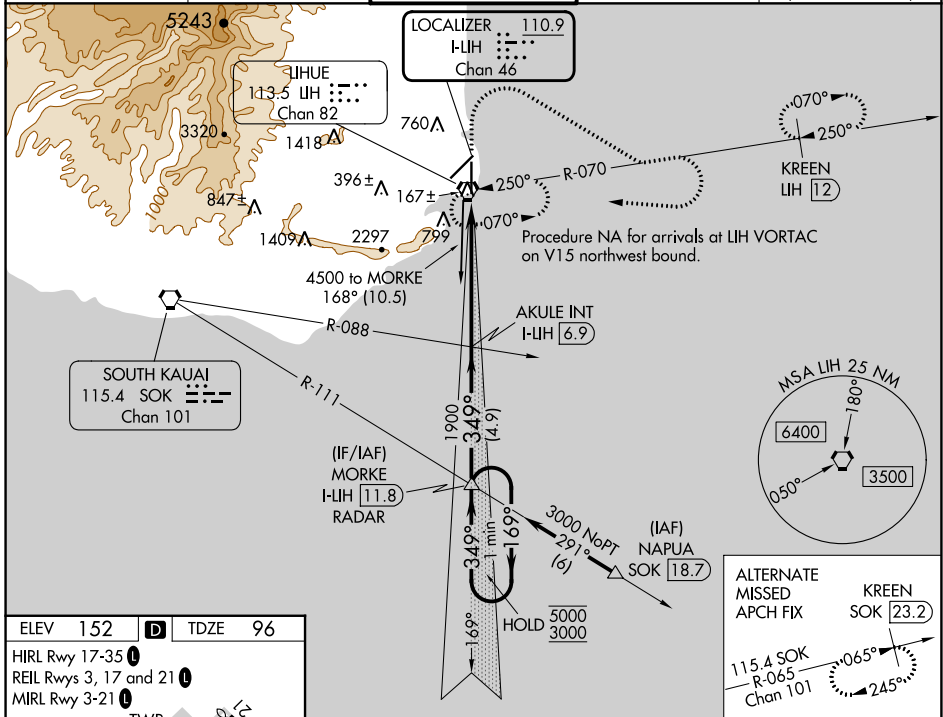
# ILS or LOC RWY 35

LIHUE (LIH)(PHLI)

**⚠** Circling NA at night. Circling NA west of Rwy 17-35. For inop ALS, increase S-ILS 35 Cat E visibility to ¾ SM and increase S-LOC 35 Cat E visibility to 1 SM.

**MALSRS**  MISSED APPROACH: Climb to 600 then climbing right turn to 3000 on heading 110° and LIH VORTAC R-070 then climbing right turn to 4000 direct LIH VORTAC and hold. (TACAN or DME equipped aircraft continue on LIH VORTAC R-070 to KREEN/LIH VORTAC 12 DME and hold, east, RT, 250° inbound, continue climb-in-hold to 3000).

ATIS <b>127.2</b>	HCF CENTER <b>126.5 269.4</b>	<b>LIHUE TOWER*</b> <b>118.9</b> (CTAF) <b>263.1</b>	GND CON <b>121.9</b>	CLNC DEL <b>126.5 269.4</b> (When twr closed)
----------------------	----------------------------------	---	-------------------------	---



ELEV 152	TDZE 96					
HIRL Rwy 17-35	REIL Rwy 3, 17 and 21					
MIRL Rwy 3-21	TWR 198					
FAF to MAP 5.5 NM						
Knots	60	90	120	150	180	
Min:Sec	5:30	3:40	2:45	2:12	1:50	
<b>CIRCLING</b>	520-1 368 (400-1)	620-1 468 (500-1)	620-1½ 468 (500-1½)	720-2 568 (600-2)	740-2 588 (600-2)	