

APP CRS 349°	Rwy Idg 6500
	TDZE 96
	Apt Elev 153

RNAV (RNP) Z RWY 35

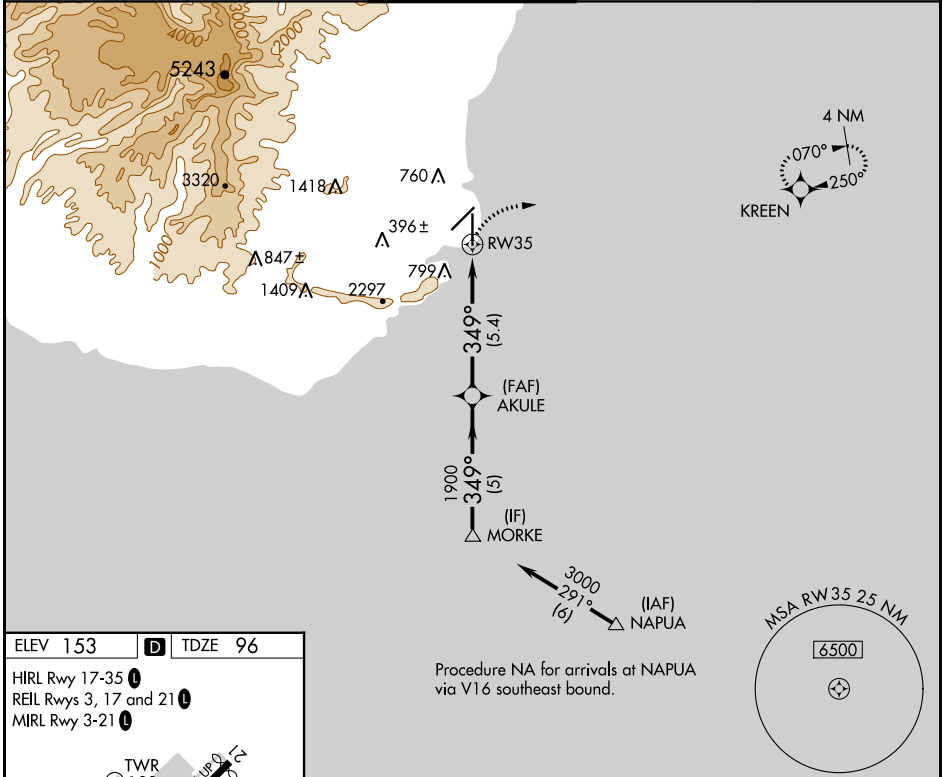
LIHUE (LIH)(PHLI)

V GPS required. For inoperative MALSR, increase RNP 0.30 visibility to 1¾. For uncompensated Baro-VNAV systems, procedure NA below 14°C (57°F) or above 48°C (119°F).

MALSR

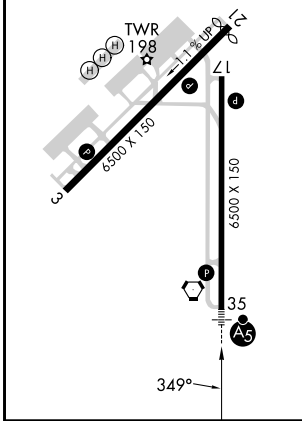

MISSED APPROACH: Climbing right turn to 3000 direct KREEN and hold.

ATIS 127.2	HCF CENTER 126.5 269.4	LIHUE TOWER* 118.9 (CTAF) 263.1	GND CON 121.9	CLNC DEL 126.5 269.4 (When twr closed)
----------------------	----------------------------------	--	-------------------------	---

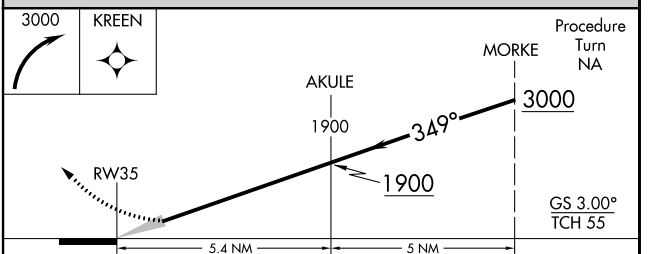
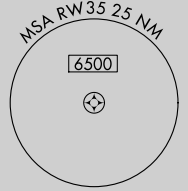


ELEV 153	D	TDZE 96
----------	----------	---------

HIRL Rwy 17-35 **I**
 REIL Rwys 3, 17 and 21 **I**
 MIRL Rwy 3-21 **I**



Procedure NA for arrivals at NAPUA via V16 southeast bound.



CATEGORY	A	B	C	D
RNP 0.30 DA	599-1¼ 503 (500-1¼)			

AUTHORIZATION REQUIRED

PAC, 05 SEP 2024 to 31 OCT 2024

PAC, 05 SEP 2024 to 31 OCT 2024