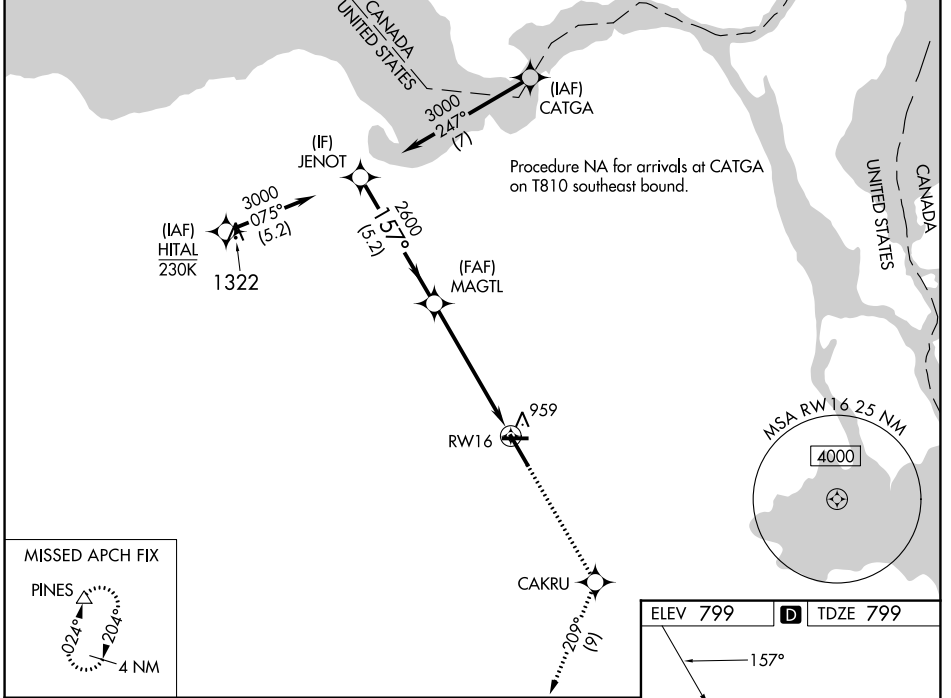


WAAS CH 69215 W16A	APP CRS 157°	Rwy Idg 7203 TDZE 799 Apt Elev 799
--	------------------------	---

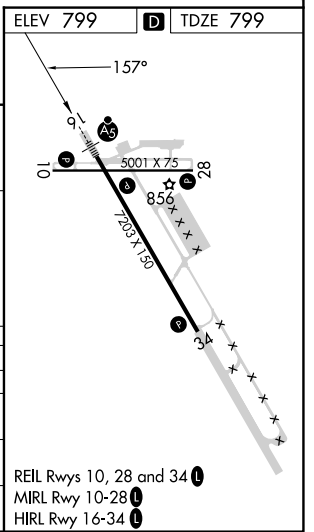
RNAV (GPS) RWY 16

CHIPPEWA COUNTY INTL (CIU)

RNP APCH - GPS.		MALSR	MISSED APPROACH: Climb to 3000 direct CAKRU and on track 209° to PINES and hold.
<p>▼ For uncompensated Baro-VNAV systems, LNAV/VNAV NA below -16°C or above 54°C.</p> <p>▲ For inop ALS, increase LNAV/VNAV all Cats visibility to 1 SM.</p>			
AWOS-3PT 127.575	TORONTO CENTER 132.65 344.5	UNICOM 123.0 (CTAF) ①	



JENOT		MAGTL		3000	CAKRU	tr 209°	PINES
3000		2600		1.1 NM to RW16		RW16	
GP 3.00° TCH 58		157°		5.2 NM		4.3 NM	
CATEGORY	A	B	C	D			
LPV DA	999-½		200 (200-½)				
LNAV/VNAV DA	1140-⅝		341 (400-⅝)				
LNAV MDA	1220-½ 421 (500-½)		1220-¾ 421 (500-¾)				
CIRCLING	1260-1 461 (500-1)		1260-1½ 461 (500-1½)		1360-2 561 (600-2)		



EC-1, 05 SEP 2024 to 03 OCT 2024

EC-1, 05 SEP 2024 to 03 OCT 2024