

# RNAV (GPS) RWY 28

CHIPPEWA COUNTY INTL (CIU)

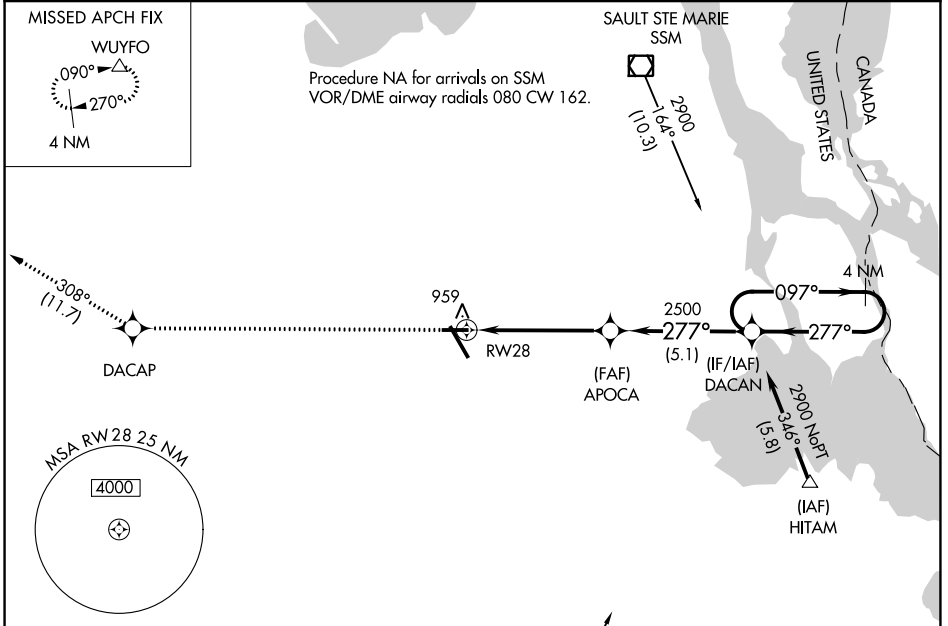
APP CRS <b>277°</b>	Rwy Idg TDZE Apt Elev	<b>5000</b> <b>799</b> <b>799</b>
------------------------	-----------------------------	---

RNP APCH.

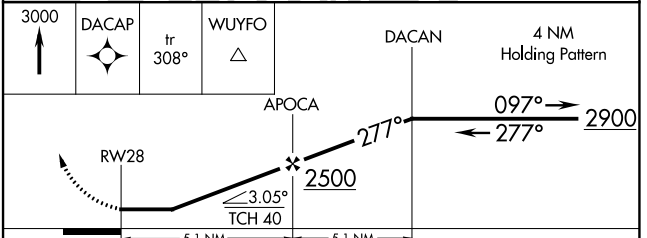
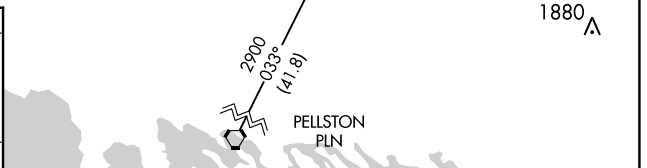
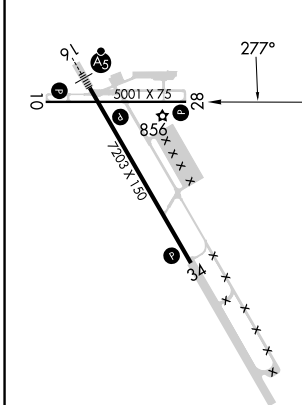
**⚠** Rwy 28 helicopter visibility reduction below 1 SM NA. When local altimeter setting not received, use Sault Ste Marie Muni/Sanderson Fld altimeter setting; increase all MDA 60 feet, increase LNAV and Circling visibility Cat C/D ¼ SM. Straight-in and Circling Rwy 28 NA at night.

MISSED APPROACH: Climb to 3000 direct DACAP and track 308° to WUYFO and hold.

AWOS-3PT <b>127.575</b>	TORONTO CENTER <b>132.65 344.5</b>	UNICOM <b>123.0 (CTAF) 0</b>
----------------------------	---------------------------------------	---------------------------------



ELEV 799	<b>D</b> TDZE 799
----------	-------------------



CATEGORY	A	B	C	D
LNAV MDA	1220-1	421 (500-1)	1220-1½	421 (500-1½)
<b>C</b> CIRCLING	1260-1	461 (500-1)	1260-1½ 461 (500-1½)	1360-2 561 (600-2)

REIL Rws 10, 28 and 34 **0**  
MIRL Rwy 10-28 **0**  
HIRL Rwy 16-34 **0**

EC-1, 05 SEP 2024 to 03 OCT 2024

EC-1, 05 SEP 2024 to 03 OCT 2024