

VORTAC LAL 116.0 Chan 107	APP CRS 096°	Rwy Idg 8500 TDZE 132 Apt Elev 142
-----------------------------------------------	------------------------	---------------------------------------------------------------

VOR RWY 10

LAKELAND LINDER INTL (LAL)

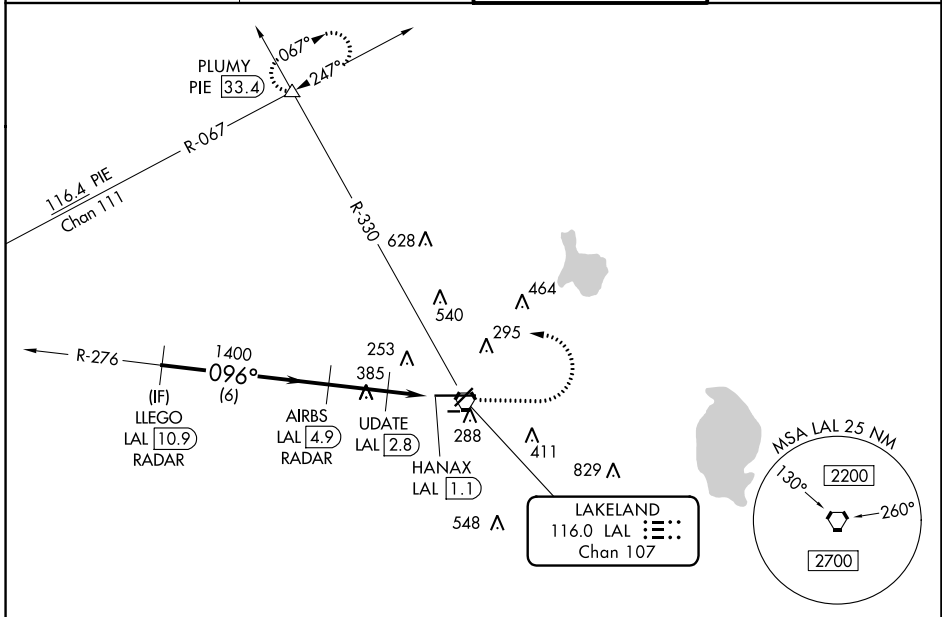
RADAR required for procedure entry. DME or RADAR required.

⚠ Circling NA to Rwys 8 and 26. Circling Rwy 28 NA at night. For inop ALS, increase S-10 Cat C/D visibility to 1½ SM; increase UDATE fix minimums S-10 Cat C/D visibility to RVR 6000.

ALS-F-2

MISSED APPROACH: Climb to 1000 then climbing left turn to 2000 on heading 294° and on LAL VORTAC R-330 to PLUMY INT/ PIE 33.4 DME and hold.

ATIS 118.025	TAMPA APP CON 120.65 290.3	LAKELAND TOWER 124.5 236.775	GND CON 121.4
------------------------	--------------------------------------	----------------------------------------	-------------------------



SE-3, 05 SEP 2024 to 03 OCT 2024

SE-3, 05 SEP 2024 to 03 OCT 2024

ELEV 142		D TDZE 132		
<p>△ 1667</p> <p>LLEGO LAL 10.9 RADAR</p> <p>AIRBS LAL 4.9 RADAR</p> <p>UPDATE LAL 2.8</p> <p>HANAX LAL 1.1</p> <p>VGSI and descent angles not coincident (VGSI Angle 3.00/TCH 71).</p> <p>2000</p> <p>1400</p> <p>700</p> <p>096°</p> <p>2.98° TCH 52</p> <p>6 NM</p> <p>2.1 NM</p> <p>0.7</p> <p>1.1</p> <p>1000</p> <p>2000</p> <p>hdg 294°</p> <p>LAL R-330</p> <p>PLUMY △</p> <p>TWR 285</p> <p>8500 X 150</p> <p>5000 X 150</p> <p>2208 X 60</p> <p>096°</p>				
CATEGORY	A	B	C	D
S-10	700/24	568 (600-½)	700-1¼	568 (600-1¼)
CIRCLING	700-1	558 (600-1)	720-1½ 578 (600-1½)	840-2¼ 698 (700-2¼)
UPDATE FIX MINIMUMS				
S-10	540/24	408 (400-½)	540/40	408 (400-¾)
CIRCLING	600-1 458 (500-1)	660-1 518 (600-1)	720-1½ 578 (600-1½)	840-2¼ 698 (700-2¼)
TDZ/CL Rwy 10				HIRL Rwys 5-23 and 10-28
FAF to MAP 3.8 NM				
Knots	60	90	120	150 180
Min:Seq	3:48	2:32	1:54	1:31 1:16