

WAAS CH 50115 W11A	APP CRS 106°	Rwy Idg TDZE Apt Elev	7504 147 151
--	------------------------	-----------------------------	---

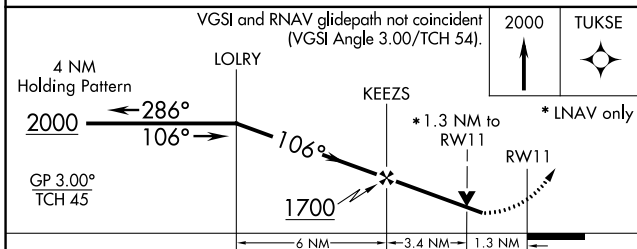
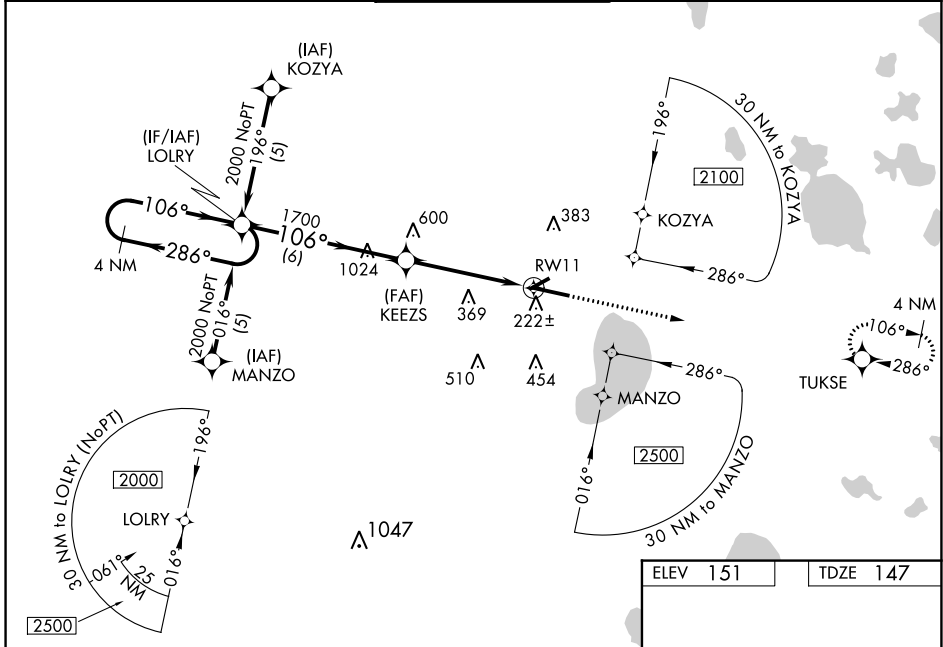
RNAV (GPS) RWY 11

GAINESVILLE RGNL (GNTV)

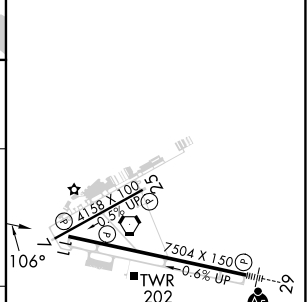
⚠ For uncompensated Baro-VNAV systems, LNAV/VNAV NA below -15° C (5° F) or above 48° C (120° F). DME/DME RNP-0.3 NA. When local altimeter setting not received, use Ocala Intl-Jim Taylor Fld altimeter setting and increase LPV DA to 541 feet and all Cats visibility ½ SM; increase LNAV/VNAV DA to 681 feet and all Cats visibility ½ SM; increase all MDAs 100 feet and increase LNAV Cat C/D and Circling Cat C visibility ¼ SM and Circling Cat D ½ SM. Visibility reduction by helicopters NA. Baro-VNAV NA when using Ocala Intl-Jim Taylor Fld altimeter setting. When VGSI inoperative, Circling Rwy 25 NA at night. VDP NA when using Ocala Intl-Jim Taylor Fld altimeter setting.

MISSED APPROACH: Climb to 2000 direct TUKSE and hold.

ATIS 127.15	JACKSONVILLE APP CON 118.175 338.25	GAINESVILLE TOWER★ 119.55 (CTAF) 0 353.7	GND CON 121.7	UNICOM 122.95
-----------------------	---	--	-------------------------	-------------------------



ELEV 151	TDZE 147
----------	----------



CATEGORY	A	B	C	D
LPV DA	460-1 313 (400-1)			
LNAV/DA VNAV	600-1½ 453 (500-1½)			
LNAV MDA	600-1 453 (500-1)	600-1¼ 453 (500-1¼)		600-1½ 453 (500-1½)
CIRCLING	620-1 469 (500-1)	700-1 549 (600-1)	760-1¾ 609 (700-1¾)	820-2 669 (700-2)

REIL Rwy 11
MRL Rwy 7-25
HIRL Rwy 11-29

SE-3, 05 SEP 2024 to 03 OCT 2024

SE-3, 05 SEP 2024 to 03 OCT 2024