

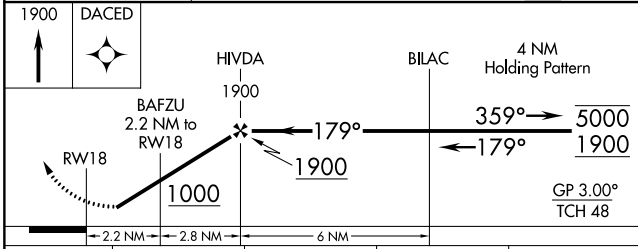
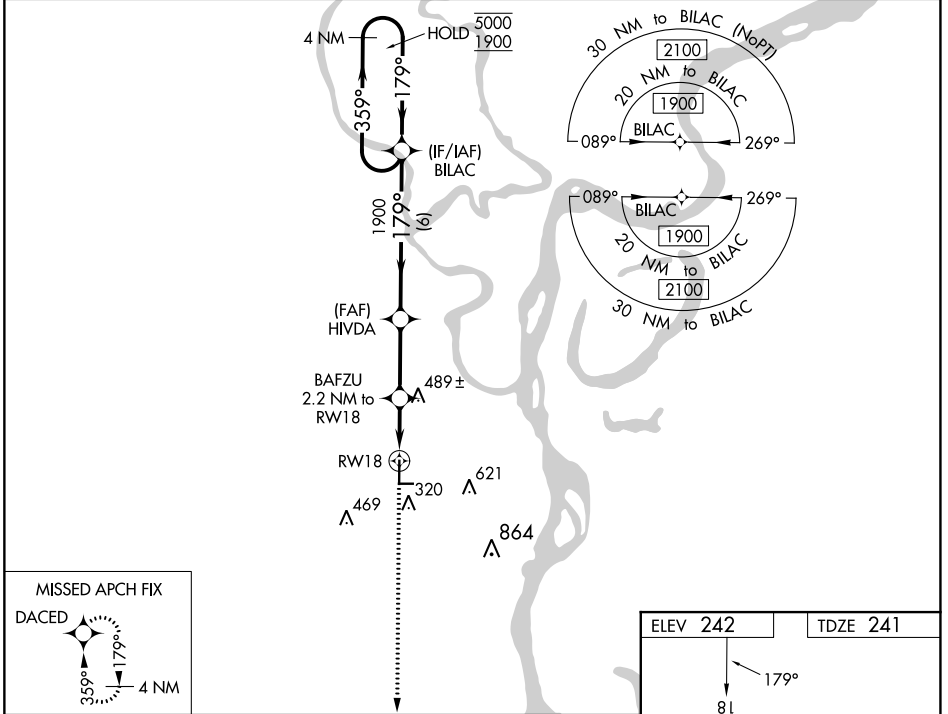
WAAS CH <b>86941</b> <b>W18A</b>	APP CRS <b>179°</b>	Rwy Idg TDZE Apt Elev	<b>5001</b> <b>241</b> <b>242</b>
--	------------------------	-----------------------------	---

# RNAV (GPS) RWY 18

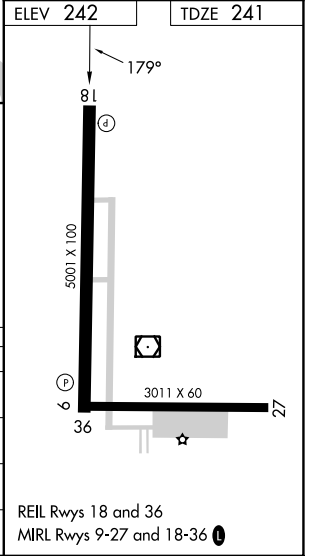
THOMPSON-ROBBINS (HEE)

RNP APCH - GPS.	MISSED APPROACH: Climb to 1900 direct DACED and hold.
<p>▼ Baro-VNAV NA. Use Tunica altimeter setting. Rwy 18 helicopter visibility reduction below 3/4 SM NA. Circling Rwy 9, 27 NA at night.</p> <p>▲ NA</p>	

UTA AWOS-3 <b>118.075</b>	MEMPHIS CENTER <b>135.3 335.8</b>	UNICOM <b>122.8 (CTAF) ①</b>
------------------------------	--------------------------------------	---------------------------------



CATEGORY	A	B	C	D
LPV DA		542-1	301 (300-1)	
LNAV/VNAV DA		710-1 3/8	469 (500-1 3/8)	
LNAV MDA	740-1	499 (500-1)	740-1 3/8	499 (500-1 3/8)
① CIRCLING	840-1	598 (600-1)	980-2 738 (800-2)	980-2 1/4 738 (800-2 1/4)



SC-1, 05 SEP 2024 to 03 OCT 2024

SC-1, 05 SEP 2024 to 03 OCT 2024