

VOR/DME UJM <b>113.65</b> Chan <b>83</b> (Y)	APP CRS <b>013°</b>	Rwy Idg <b>5001</b> TDZE <b>240</b> Apt Elev <b>242</b>
--	------------------------	---

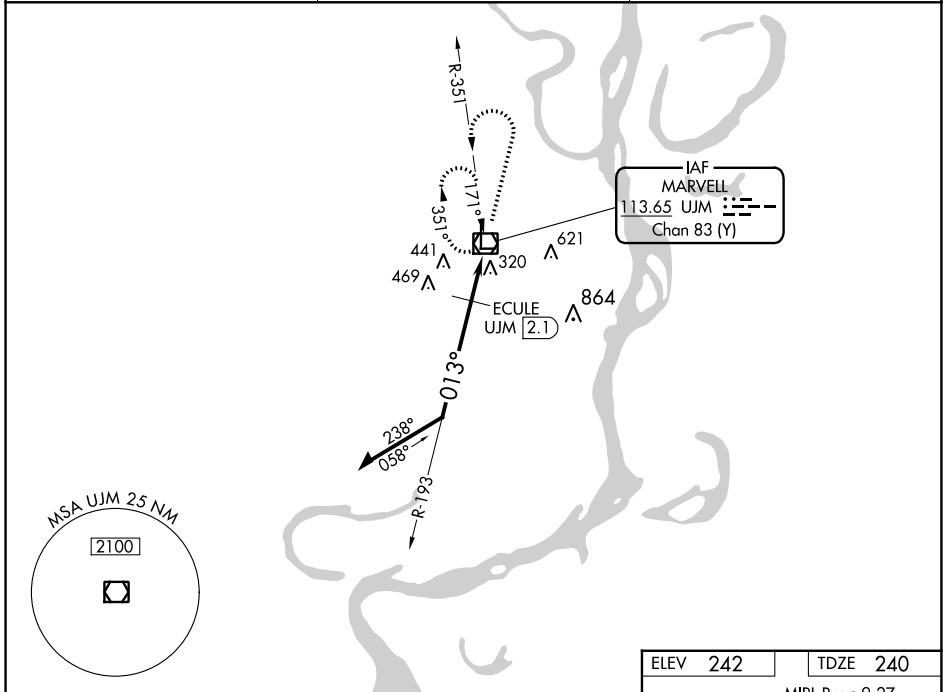
# VOR RWY 36

THOMPSON-ROBBINS (HEE)

**▼** Use Tunica altimeter setting.  
**▲** NA Circling Rwy 9, 27 NA at night.

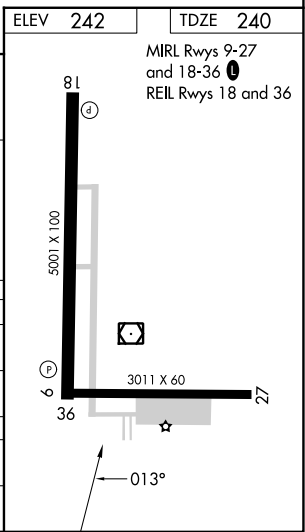
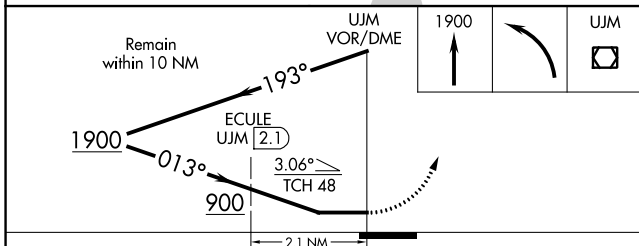
MISSED APPROACH: Climb to 1900 then left turn direct UJM VOR/DME and hold.

UTA AWOS-3 <b>118.075</b>	MEMPHIS CENTER <b>135.3 335.8</b>	UNICOM <b>122.8</b> (CTAF) <b>0</b>
------------------------------	--------------------------------------	--



SC-1, 05 SEP 2024 to 03 OCT 2024

SC-1, 05 SEP 2024 to 03 OCT 2024



CATEGORY	A	B	C	D
S-36	900-1	660 (700-1)	900-1 $\frac{7}{8}$	660 (700-1 $\frac{7}{8}$ )
<b>C</b> CIRCLING	900-1	658 (700-1)	980-2 738 (800-2)	980-2 $\frac{1}{4}$ 738 (800-2 $\frac{1}{4}$ )
ECULE FIX MINIMUMS				
S-36	700-1	460 (500-1)	700-1 $\frac{3}{8}$	460 (500-1 $\frac{3}{8}$ )
<b>C</b> CIRCLING	840-1	598 (600-1)	980-2 738 (800-2)	980-2 $\frac{1}{4}$ 738 (800-2 $\frac{1}{4}$ )