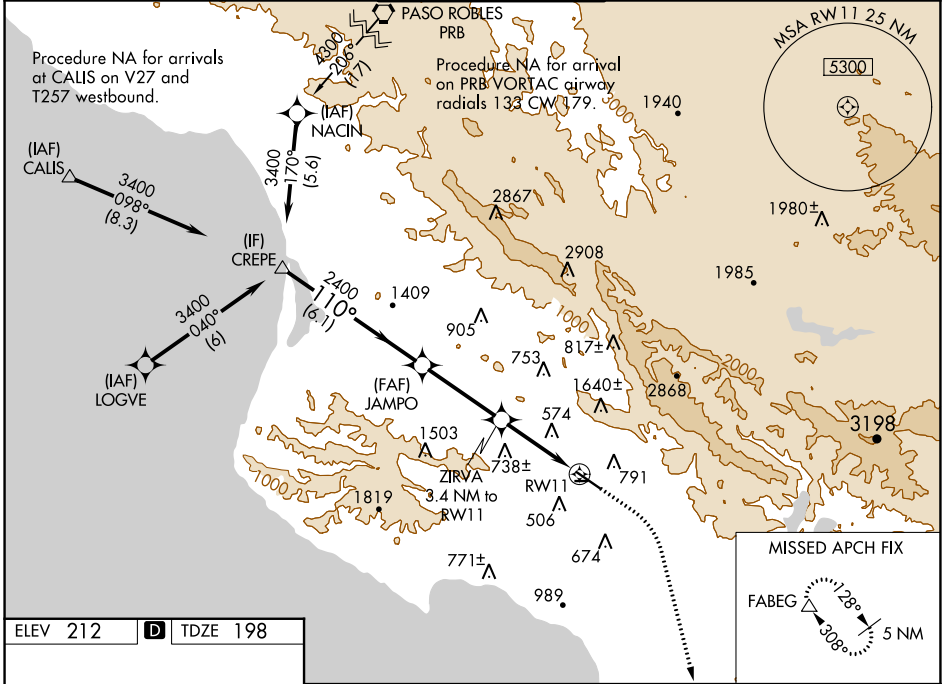


| | | | |
|--|------------------------|---|-------------|
| WAAS CH 50328 W11A | APP CRS 110° | Rwy Idg TDZE 198 Apt Elev 212 | 5300 |
|--|------------------------|---|-------------|

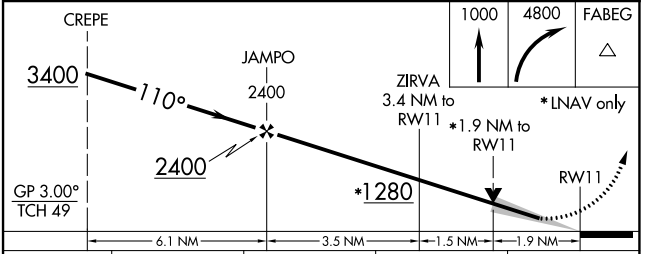
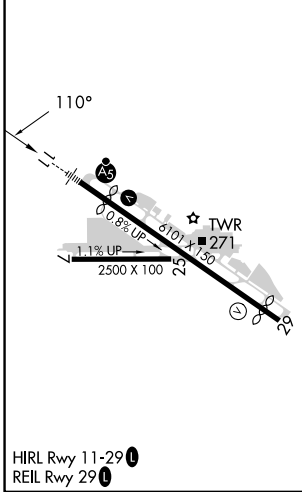
RNAV (GPS) RWY 11

SAN LUIS OBISPO COUNTY RGNL (SBP)

| | | | | |
|--|--|--|--|-------------------------|
| RNP APCH. | | MALSR | MISSED APPROACH: Climb to 1000 then climbing right turn to 4800 direct FABEG and hold, continue climb-in-hold to 4800. | |
| <p>⚠ Circling NA north of Rwy 11-29. Circling Rwy 25 NA at night. For uncompensated Baro-VNAV systems, LNAV/VNAV NA below 0°C or above 54°C. For inop ALS, increase LNAV/VNAV all Cats visibility to 2 SM.</p> | | | | |
| ATIS* 120.6 | SANTA BARBARA APP CON* 127.725 244.575 | SAN LUIS TOWER* 124.0 (CTAF) 0 379.9 | GND CON 121.6 | UNICOM 122.95 |



| | | |
|----------|----------|----------|
| ELEV 212 | D | TDZE 198 |
|----------|----------|----------|



| CATEGORY | A | B | C | D |
|-------------------|----------------------|---------------------------------|-------------------------|-------------------------|
| LPV DA | | 398-1/2 | 200 (200-1/2) | |
| LNAV/VNAV DA | | 946-1 3/4 | 748 (800-1 3/4) | |
| LNAV MDA | 840-1/2 | 642 (700-1/2) | 840-1 3/8 | 642 (700-1 3/8) |
| C CIRCLING | 840-1 628 (700-1) | 1220-1 1/2 1008 (1100-1 1/2) | 1460-3 1248 (1300-3) | 1560-3 1348 (1400-3) |

SW-3, 05 SEP 2024 to 03 OCT 2024

SW-3, 05 SEP 2024 to 03 OCT 2024