

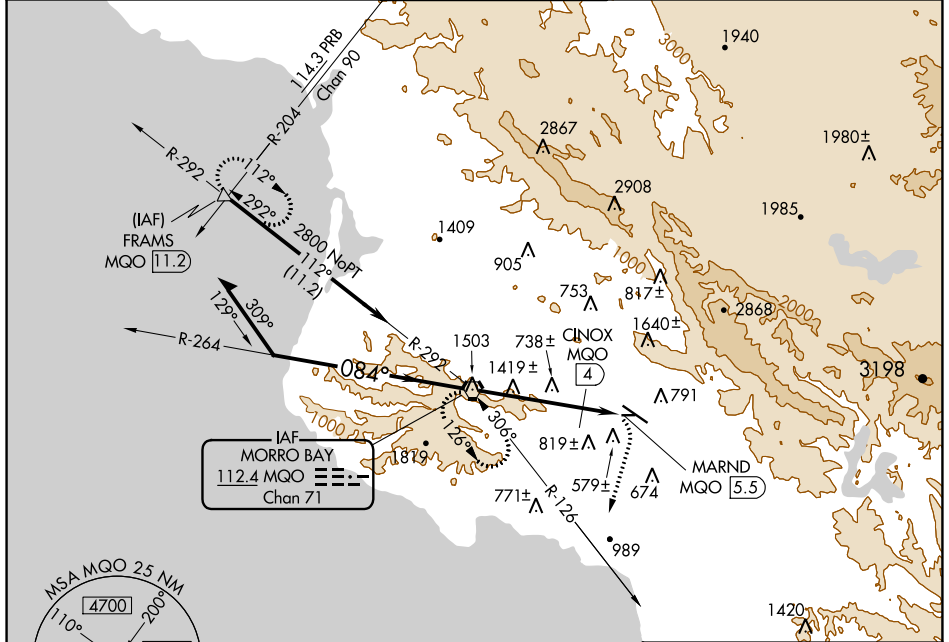
VORTAC MQO <b>112.4</b> Chan 71	APP CRS <b>084°</b>	Rwy Idg TDZE Apt Elev	<b>N/A</b> <b>N/A</b> <b>212</b>
---------------------------------------	------------------------	-----------------------------	--

# VOR or TACAN-A

SAN LUIS OBISPO COUNTY RGNL (SBP)

**MISSED APPROACH:** Climbing right turn to 3100 via heading 175° and MQO R-126 to MQO VORTAC and hold. (TACAN Aircraft continue climb to 4000 via MQO R-292 to FRAMS 11.2 DME and hold east, right turns, 292° inbound.)

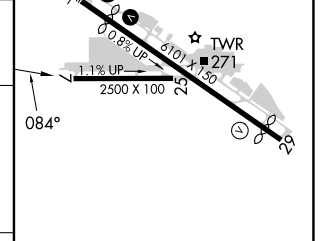
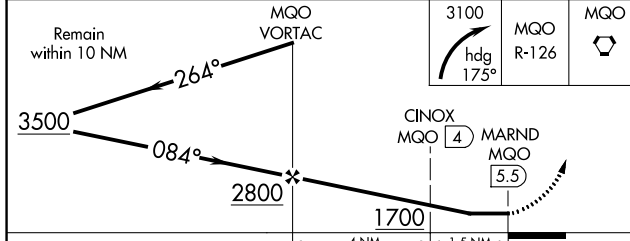
ATIS* <b>120.6</b>	SANTA BARBARA APP CON* <b>127.725 244.575</b>	SAN LUIS TOWER* <b>124.0 (CTAF) 379.9</b>	GND CON <b>121.6</b>	UNICOM <b>122.95</b>
-----------------------	--	--	-------------------------	-------------------------



SW-3, 05 SEP 2024 to 03 OCT 2024

SW-3, 05 SEP 2024 to 03 OCT 2024

ELEV 212	<b>D</b>
----------	----------



CATEGORY	A	B	C	D	HIRL Rwy 11-29	REIL Rwy 29			
CIRCLING	1700-1¼ 1488 (1500-1¼)	1700-1½ 1488 (1500-1½)	1700-3	1488 (1500-3)	<b>1</b>	<b>1</b>			
TACAN OR DME MINIMA									
CIRCLING	1120-1¼ 908 (1000-1¼)	1220-1½ 1008 (1100-1½)	1460-3 1248 (1300-3)	1560-3 1348 (1400-3)	FAF to MAP 5.5 NM				
				Knots	60	90	120	150	180
				Min:Sec	5:30	3:40	2:45	2:12	1:50