

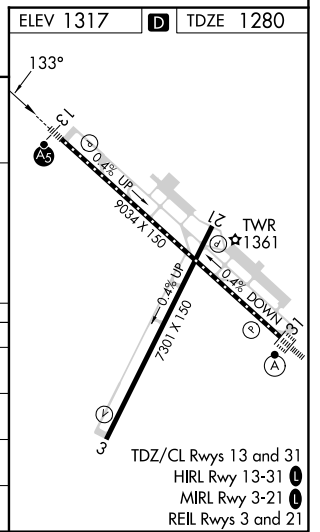
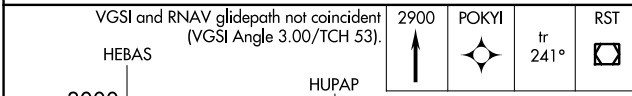
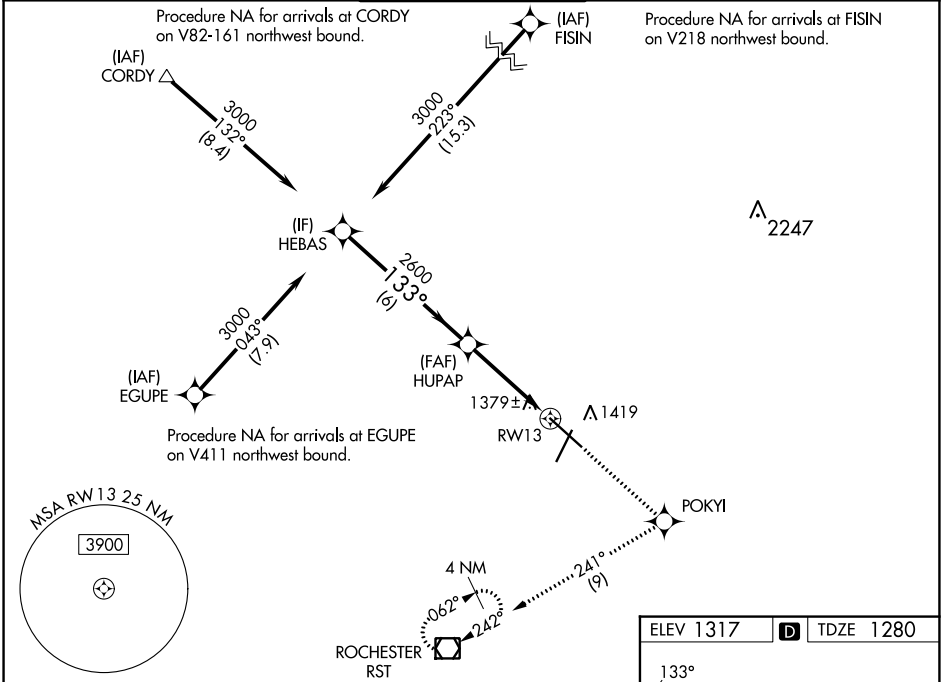
WAAS CH <b>90202</b> <b>W13A</b>	APP CRS <b>133°</b>	Rwy Idg TDZE Apt Elev	<b>9033</b> <b>1280</b> <b>1317</b>
--	------------------------	-----------------------------	---

# RNAV (GPS) RWY 13

ROCHESTER INTL (RST)

RNP APCH - GPS.	MALSR	MISSED APPROACH: Climb to 2900 direct POKYI and on track 241° to RST VOR/DME and hold.
ASR For uncompensated Baro-VNAV systems, LNAV/VNAV NA below -17°C or above 54°C. For inop ALS, increase LNAV Cat C/D visibility to RVR 5500.		

ATIS <b>120.5</b>	ROCHESTER APP CON* <b>119.8 251.125</b>	ROCHESTER TOWER* <b>118.3 (CTAF) 257.8</b>	GND CON <b>121.9</b>	UNICOM <b>122.95</b>
----------------------	--	---	-------------------------	-------------------------



CATEGORY	A	B	C	D
LPV DA	1530/18		250 (300-½)	
LNAV/VNAV DA	1679/50		399 (400-1)	
LNAV MDA	1640/24	360 (400-½)	1640/30 360 (400-¾)	1640/50 360 (400-1)
CIRCLING	1720-1 403 (500-1)	1780-1 463 (500-1)	1900-1½ 583 (600-1½)	1900-2 583 (600-2)

NC-1, 05 SEP 2024 to 03 OCT 2024

NC-1, 05 SEP 2024 to 03 OCT 2024