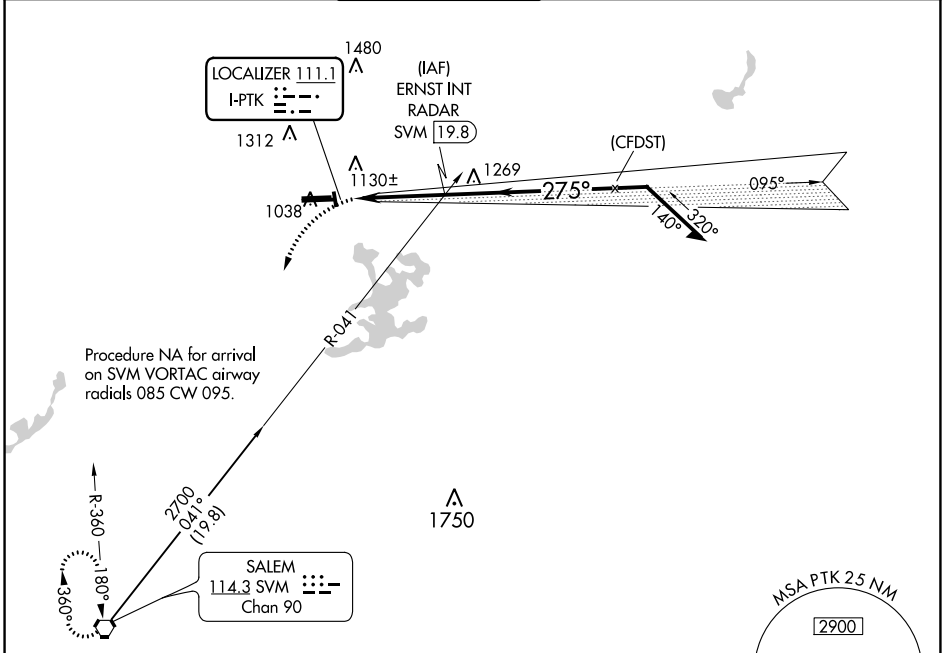


LOC I-PTK <b>111.1</b>	APP CRS <b>275°</b>	Rwy Idg <b>6520</b>
		TDZE <b>974</b>
		Apt Elev <b>981</b>

**LOC BC RWY 27L**  
OAKLAND COUNTY INTL (PTK)

<p><b>⚠</b> Circling Rwy 9L, 36 NA at night. When local altimeter setting not received, use Coleman A Young Muni altimeter setting and increase all MDA 120 feet, increase S-27L Cat C/D visibility 3/8 SM and Circling Cat C/D visibility 1/2 SM.</p>	<p><b>MISSED APPROACH:</b> Climbing left turn to 3000 direct SVM VORTAC and hold.</p>
--	---

ATIS <b>125.025</b>	DETROIT APP CON <b>132.35 284.0</b>	PONTIAC TOWER * <b>120.5 (CTAF) 0</b>	GND CON <b>121.9</b>	CLNC DEL <b>118.25</b>	UNICOM <b>122.95</b>
------------------------	--	--	-------------------------	---------------------------	-------------------------



EC-1, 05 SEP 2024 to 03 OCT 2024

EC-1, 05 SEP 2024 to 03 OCT 2024

ELEV 981	<b>D</b>	TDZE 974
----------	----------	----------

**BACK COURSE**

