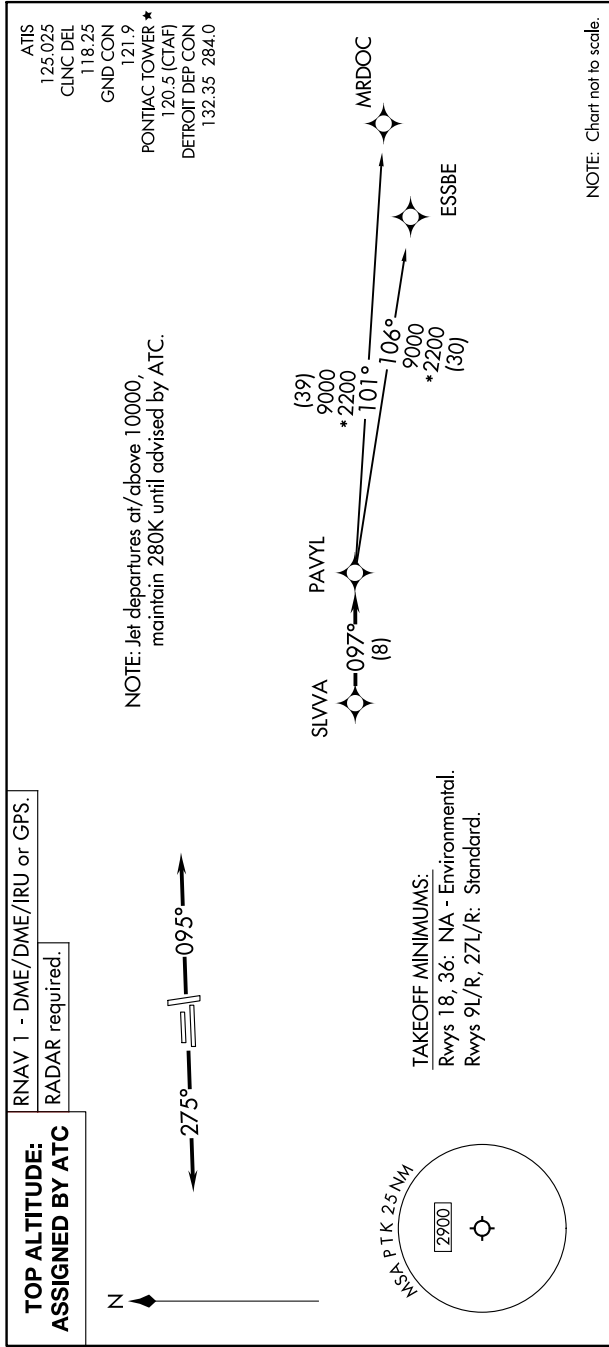


EC-1, 05 SEP 2024 to 03 OCT 2024



DEPARTURE ROUTE DESCRIPTION

TAKEOFF RUNWAYS 9L/R: Climb on heading 095° or as assigned by ATC, thence....  
 TAKEOFF RUNWAYS 27L/R: Climb on heading 275° or as assigned by ATC, thence....  
 ....for RADAR vectors to SLVVA, then on track 097° to PAVYL, then on (transition). Maintain 17000 or as assigned by ATC, expect filed altitude 10 minutes after departure.  
 ESSBE TRANSITION (PAVYL3.ESSBE):  
 MRDOC TRANSITION (PAVYL3.MRDOC):

EC-1, 05 SEP 2024 to 03 OCT 2024