

| | | | |
|--|------------------------|---|---|
| WAAS CH 63199 W17A | APP CRS 174° | Rwy Idg TDZE 843 Apt Elev 845 | 7351 843 845 |
|--|------------------------|---|---|

RNAV (GPS) RWY 17R

GRAND FORKS INTL (GFK)

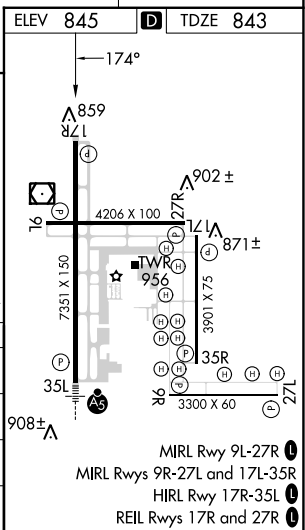
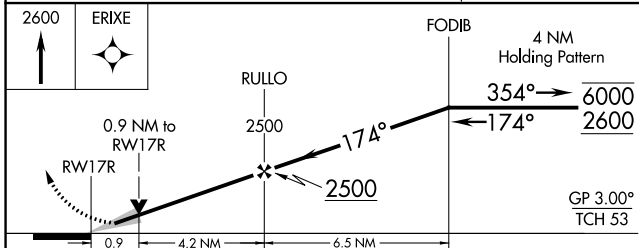
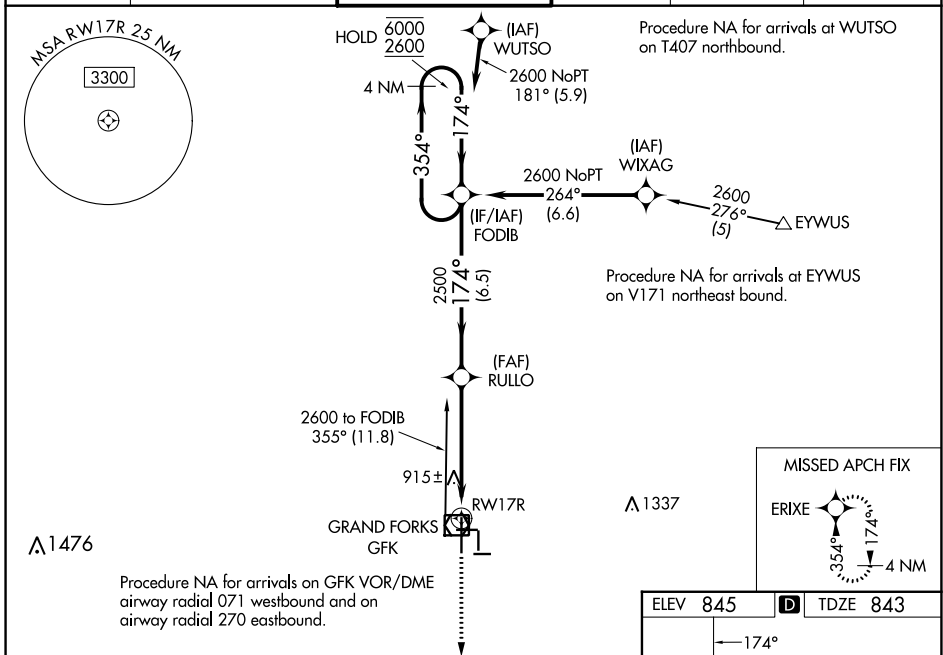
RNP APCH - GPS.

⚠ Baro-VNAV NA when using Crookston altimeter setting. For uncompensated Baro-VNAV systems, LNAV/VNAV NA below -20°C or above 54°C. VDP NA with Crookston altimeter setting.

⚠ When local altimeter setting not received, use Crookston altimeter setting and increase all DA 62 feet and all MDA 80 feet and increase LPV and LNAV/VNAV all Cats visibility $\frac{1}{8}$ SM, LNAV Cats C/D visibility $\frac{1}{8}$ SM, and Circling Cat C visibility $\frac{1}{4}$ SM.

MISSED APPROACH:
Climb to 2600 direct ERIXE and hold.

| | | | | | |
|----------------------|--|--|---------------------------|----------------------------|-------------------------|
| ATIS 119.4 | GRAND FORKS APP CON* 118.1 318.1 | GRAND FORKS TOWER* 118.4 (CTAF) 0 350.35 | GND CON 124.575 | CLNC DEL 135.725 | UNICOM 122.95 |
|----------------------|--|--|---------------------------|----------------------------|-------------------------|



| CATEGORY | A | B | C | D |
|--------------|-----------------------|-----------------------|--|-----------------------|
| LPV DA | | 1043- $\frac{3}{4}$ | 200 (200- $\frac{3}{4}$) | |
| LNAV/VNAV DA | | 1093- $\frac{3}{4}$ | 250 (300- $\frac{3}{4}$) | |
| LNAV MDA | | 1180-1 | 337 (400-1) | |
| CIRCLING | 1260-1 415 (500-1) | 1300-1 455 (500-1) | 1400-1 $\frac{1}{2}$ 555 (600-1 $\frac{1}{2}$) | 1400-2 555 (600-2) |

NC-1, 05 SEP 2024 to 03 OCT 2024

NC-1, 05 SEP 2024 to 03 OCT 2024