

|  |                        |   |
|--|------------------------|---|
| WAAS<br>CH <b>58104</b><br><b>W09A</b> | APP CRS<br><b>084°</b> | Rwy Idg <b>4206</b><br>TDZE <b>843</b><br>Apt Elev <b>845</b> |
|--|------------------------|---|

# RNAV (GPS) RWY 9L

GRAND FORKS INTL (GFK)

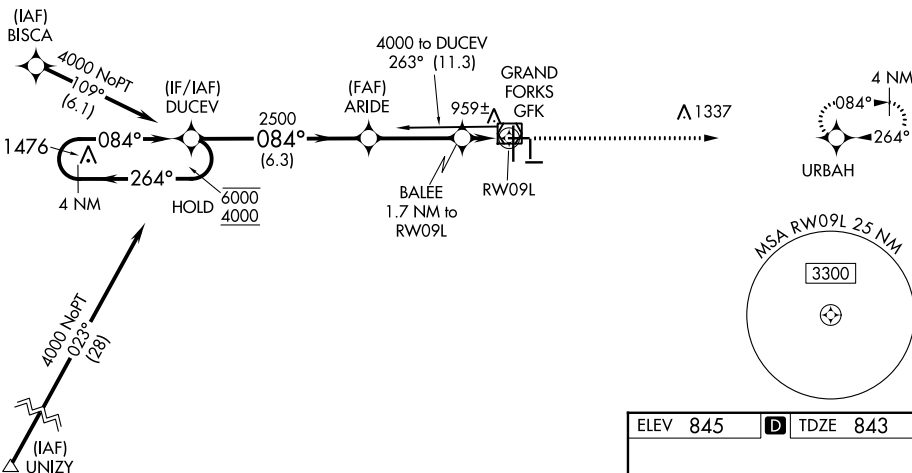
RNP APCH.

▼ Baro-VNAV and VDP NA when using Crookston altimeter setting.  
 ▲ For uncompensated Baro-VNAV systems, LNAV/VNAV NA below -16°C or above 54°C. When local altimeter setting not received, use Crookston altimeter setting and increase all DA 62 feet and all MDA 80 feet, increase LNAV Cat C visibility  $\frac{3}{8}$  SM, Cat D visibility  $\frac{1}{8}$  SM and Circling Cat C  $\frac{1}{4}$  SM.

MISSED APPROACH: Climb to 2800 direct URBAN and hold.

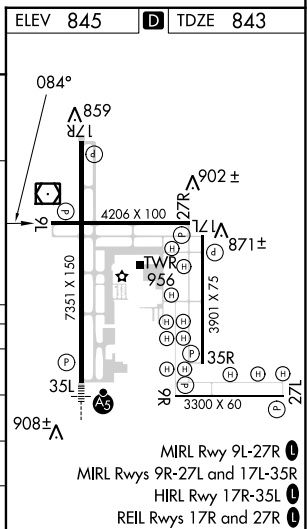
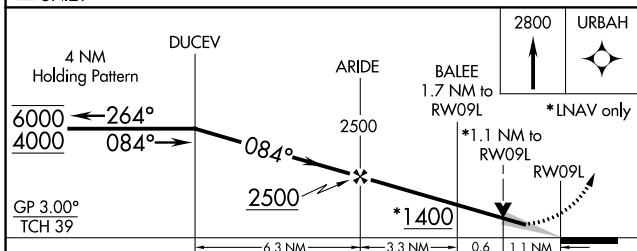
|                      |   |   |                           |                            |                         |
|----------------------|---|---|---------------------------|----------------------------|-------------------------|
| ATIS<br><b>119.4</b> | GRAND FORKS APP CON *<br><b>118.1 318.1</b> | GRAND FORKS TOWER *<br><b>118.4 (CTAF) 0 350.35</b> | GND CON<br><b>124.575</b> | CLNC DEL<br><b>135.725</b> | UNICOM<br><b>122.95</b> |
|----------------------|---|---|---------------------------|----------------------------|-------------------------|

Procedure NA for arrivals at GFK VOR/DME on V55 northeast bound.



NC-1, 05 SEP 2024 to 03 OCT 2024

NC-1, 05 SEP 2024 to 03 OCT 2024



| CATEGORY     | A           | B           | C                       | D           |
|--------------|-------------|-------------|-------------------------|-------------|
| LPV DA       | 1093-1      |             | 250 (300-1)             |             |
| LNAV/VNAV DA | 1238-1½     |             | 395 (400-1½)            |             |
| LNAV MDA     | 1220-1      |             | 377 (400-1)             |             |
|              |             |             | 1220-1¼<br>377 (400-1¼) |             |
| CIRCLING     | 1260-1      | 1300-1      | 1400-1½                 | 1400-2      |
|              | 415 (500-1) | 455 (500-1) | 555 (600-1½)            | 555 (600-2) |

MIRL Rwy 9L-27R  
 MIRL Rwys 9R-27L and 17L-35R  
 HIRL Rwy 17R-35L  
 REIL Rwys 17R and 27R