

LOC/DME I-FLD <b>108.3</b> Chan 20	APP CRS <b>002°</b>	Rwy Idg TDZE <b>795</b> Apt Elev <b>808</b>	<b>5941</b>
------------------------------------------	------------------------	---------------------------------------------------	-------------

# LOC RWY 36

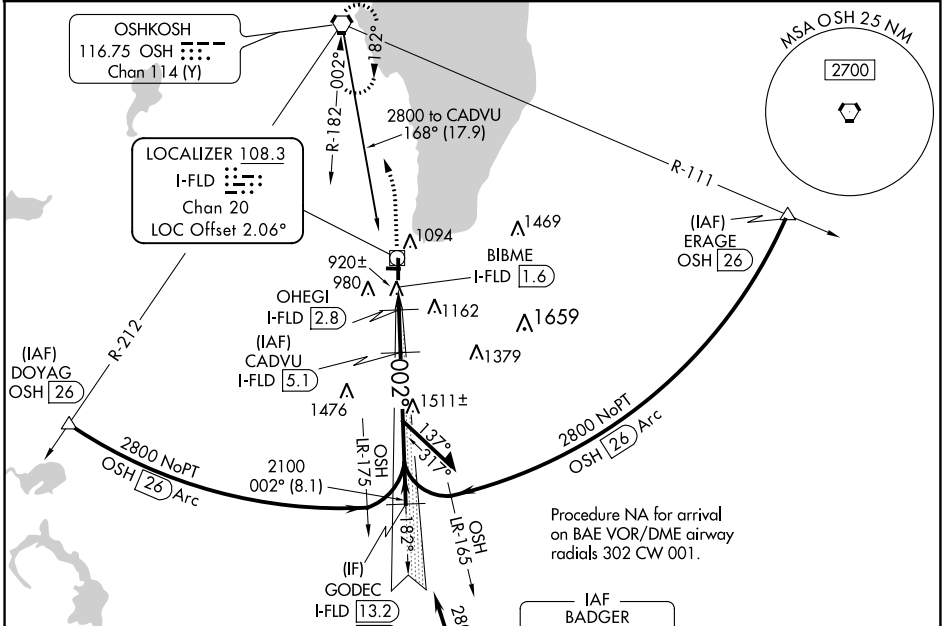
FOND DU LAC COUNTY (F.LD)

**DME required. Radar required for Procedure Entry at ERAGE.**

⚠️ Circling Rwy 9, 27 NA at night. For inop ALS, increase S-LOC 36 Cat A/B visibility to 1 SM, and Cat C/D to 1 1/8 SM. When local altimeter setting not received, use Oshkosh altimeter setting: increase all MDA 40 feet and increase Circling Cat C/D visibility 1/4 SM. VDP NA when using Oshkosh altimeter setting. For inop ALS when using Oshkosh altimeter setting, increase S-LOC 36 Cat A/B visibility to 1 SM.

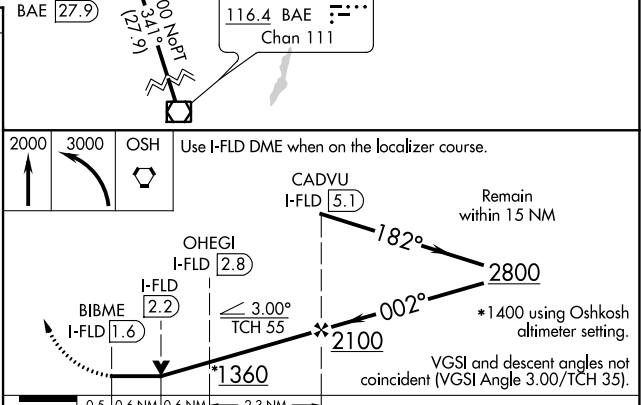
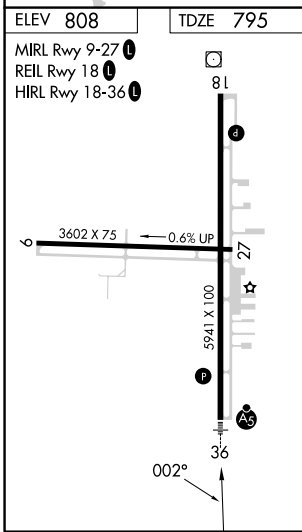
MALSR MISSED APPROACH Climb to 2000 then climbing left turn to 3000 direct OSH VORTAC and hold.

ASOS <b>134.0</b>	MILWAUKEE APP CON <b>127.0 263.075</b>	UNICOM <b>123.05 (CTAF) 0</b>
----------------------	-------------------------------------------	----------------------------------



EC-3, 05 SEP 2024 to 03 OCT 2024

EC-3, 05 SEP 2024 to 03 OCT 2024



CATEGORY	A	B	C	D
S-LOC 36	1180-3/4 385 (400-3/4)			
CIRCLING	1400-1	592 (600-1)	1520-2 712 (800-2)	1520-2 1/4 712 (800-2 1/4)