

WAAS CH 60934 W36A	APP CRS 004°	Rwy Idg TDZE Apt Elev	3800 832 835
--	------------------------	-----------------------------	---

RNAV (GPS) RWY 36

DUPONT/LAPEER (D95)

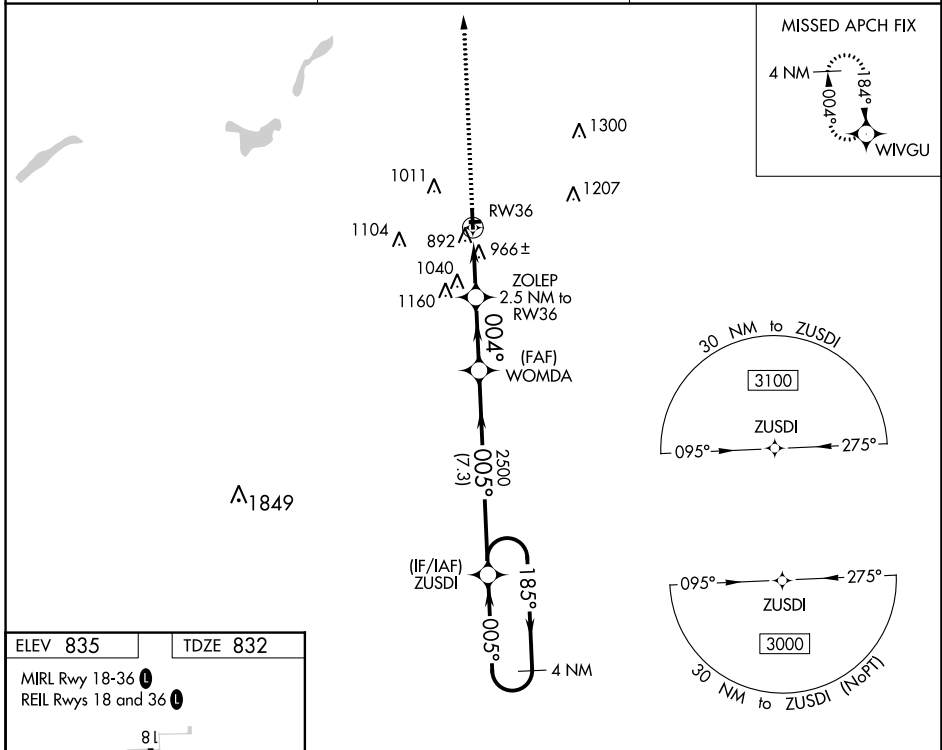
▽ DME/DME RNP-0.3 NA. Helicopter visibility reduction below ¾ SM NA. When local altimeter setting not received, use Flint altimeter setting and increase all MDA 60 feet and increase LNAV Cat C visibility ½ mile and LP Cat C and Circling Cat C visibility ¼ mile. Circling NA to Rwy 9 and 27.

MISSED APPROACH:
Climb to 3000 direct WIVGU and hold.

AWOS-3P
134.050

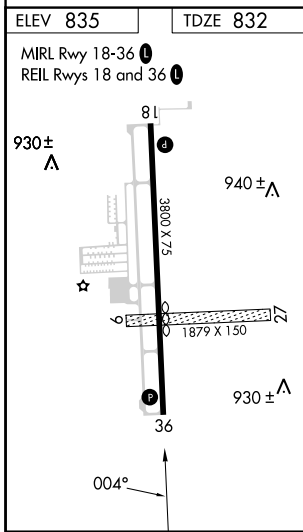
GREAT LAKES APP CON ★
118.8 257.9

UNICOM
123.0 (CTAF) 0



EC-1, 05 SEP 2024 to 03 OCT 2024

EC-1, 05 SEP 2024 to 03 OCT 2024



ELEV 835	TDZE 832	<p>3000 WIVGU Descent angle NA.</p> <p>ZOLEP 2.5 NM to RWY 36</p> <p>WOMDA</p> <p>ZUSDI 4 NM Holding Pattern</p> <p>RWY 36</p> <p>1660</p> <p>004°</p> <p>2500</p> <p>005°</p> <p>185°</p> <p>3000</p> <p>2.5 NM 2.6 NM 7.3 NM</p>			
CATEGORY	A	B	C	D	
LP MDA	1220-1	388 (400-1)	1220-1½ 388 (400-1½)	NA	
LNAV MDA	1260-1	428 (500-1)	1260-1¼ 428 (500-1¼)	NA	
C CIRCLING	1300-1 465 (500-1)	1380-1 545 (600-1)	1460-1¾ 625 (700-1¾)	NA	