

LAPEER, MICHIGAN

AL-5446 (FAA)

22139

| | | |
|---|------------------------|---|
| VORTAC FNT 116.9 Chan 116 | APP CRS 080° | Rwy Idg TDZE Apt Elev N/A N/A 835 |
|---|------------------------|---|

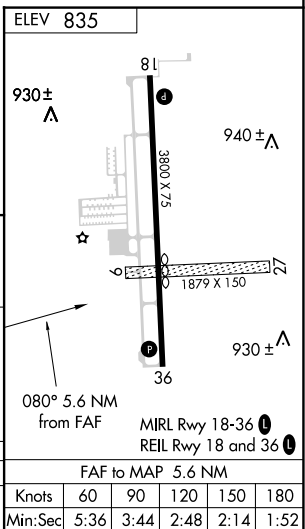
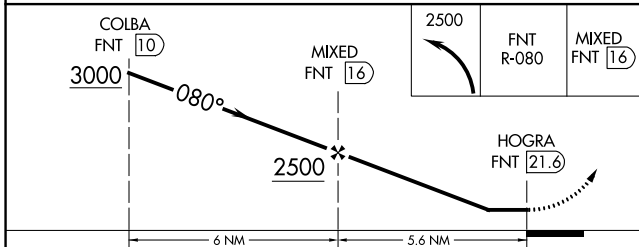
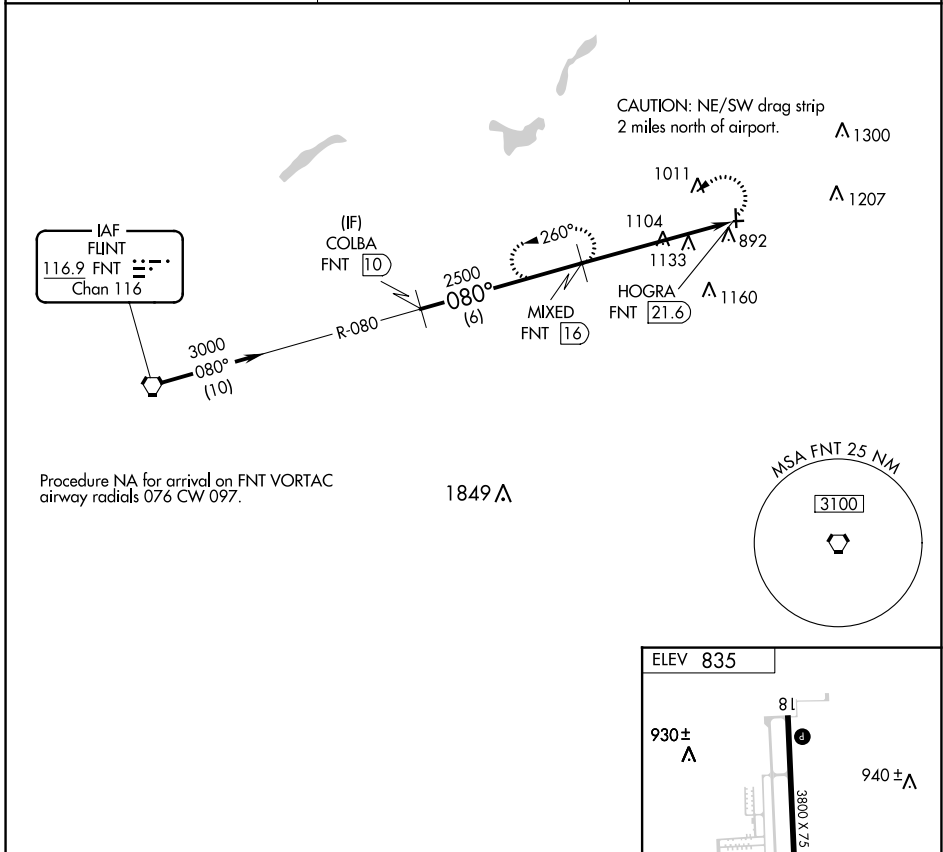
VOR-A
DUPONT/LAPEER (D95)

DME required.

⚠ Circling NA to Rwy 9 and 27. Circling Rwy 18 NA at night. Rwy 18 helicopter visibility reduction below 1 SM NA.

MISSED APPROACH: Climbing left turn to 2500 on FNT VORTAC R-080 to MIXED 16 DME and hold.

| | | |
|---------------------------|---|--|
| AWOS-3P 134.050 | GREAT LAKES APP CON ★ 118.8 257.9 | UNICOM 123.0 (CTAF) 0 |
|---------------------------|---|--|



| | | | | | | | | | | | | | | |
|------------|--------|-------------|---|--|-------------------------|--|----|--|-------------------|------|------|------|------|------|
| CATEGORY | A | | B | | C | | D | | FAF to MAP 5.6 NM | | | | | |
| | 1400-1 | 565 (600-1) | | | 1460-1¾ 625 (700-1¾) | | NA | | Knots | 60 | 90 | 120 | 150 | 180 |
| ⓐ CIRCLING | | | | | | | | | Min:Sec | 5:36 | 3:44 | 2:48 | 2:14 | 1:52 |

LAPEER, MICHIGAN
Amdt 1 13SEP18

43°04'N-83°16'W

DUPONT/LAPEER (D95)
VOR-A

EC-1, 05 SEP 2024 to 03 OCT 2024

EC-1, 05 SEP 2024 to 03 OCT 2024