

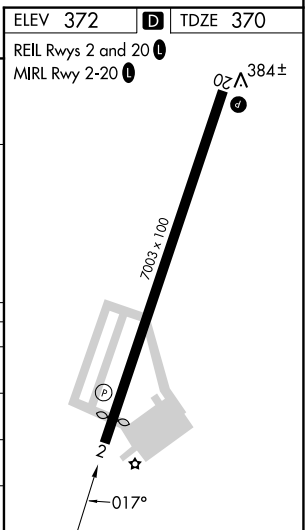
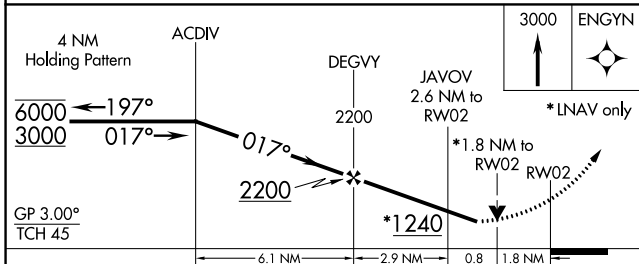
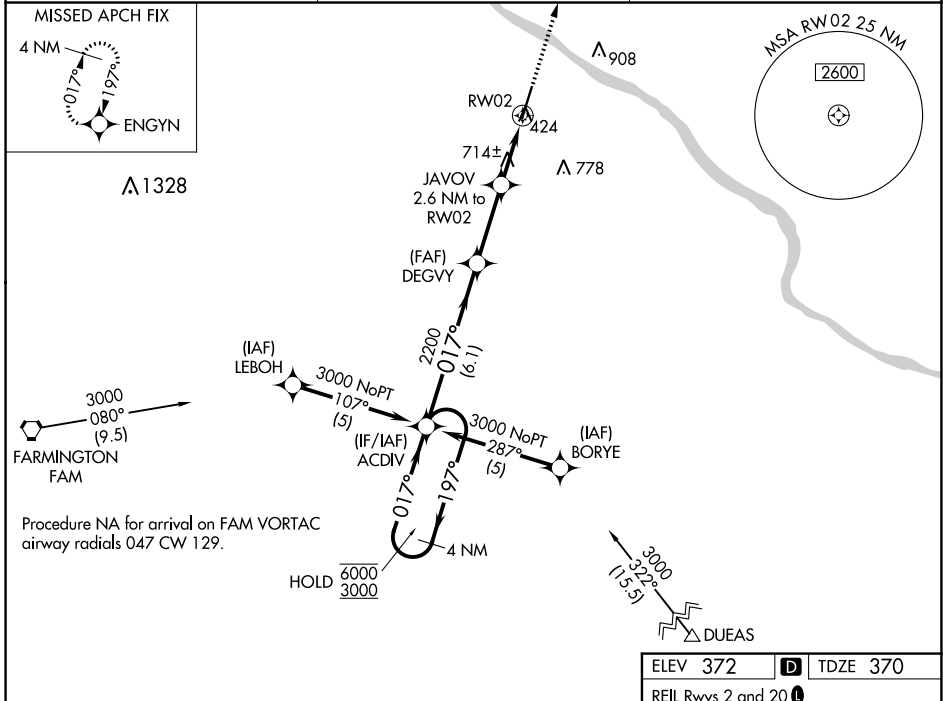
WAAS CH <b>93618</b> <b>W02A</b>	APP CRS <b>017°</b>	Rwy Idg TDZE <b>370</b> Apt Elev <b>372</b>
--	------------------------	---

# RNAV (GPS) RWY 2

PERRYVILLE RGNL (PCD)

RNP APCH.	MISSED APPROACH: Climb to 3000 direct ENGYN and hold.
<p>▼ For uncompensated Baro-VNAV systems, procedure NA below 15°C or above 54°C. Rwy 2 helicopter visibility reduction below 3/4 SM NA.</p>	

AWOS-3PT <b>118.95</b>	KANSAS CITY CENTER <b>127.475 346.275</b>	UNICOM <b>122.8 (CTAF) 0</b>
---------------------------	--	---------------------------------



CATEGORY	A	B	C	D
LPV DA		1123-3	753 (800-3)	
LNAV/VNAV DA		1186-3	816 (900-3)	
LNAV MDA	980-1	610 (700-1)	980-1 3/4	610 (700-1 3/4)
CIRCLING	980-1 608 (700-1)	1000-1 628 (700-1)	1260-2 3/4 888 (900-2 3/4)	1260-3 888 (900-3)

NC-3, 05 SEP 2024 to 03 OCT 2024

NC-3, 05 SEP 2024 to 03 OCT 2024