

WAAS CH 53418 W20A	APP CRS 197°	Rwy Idg TDZE 372 Apt Elev 372	6483
--	------------------------	---	-------------

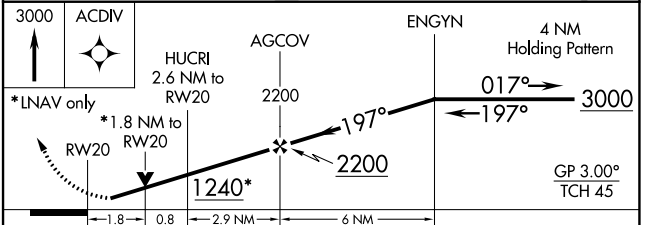
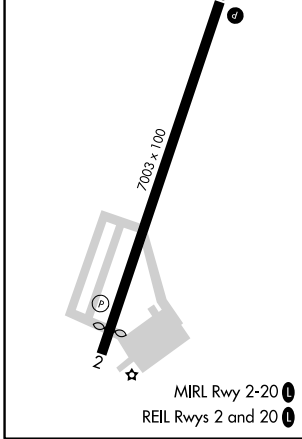
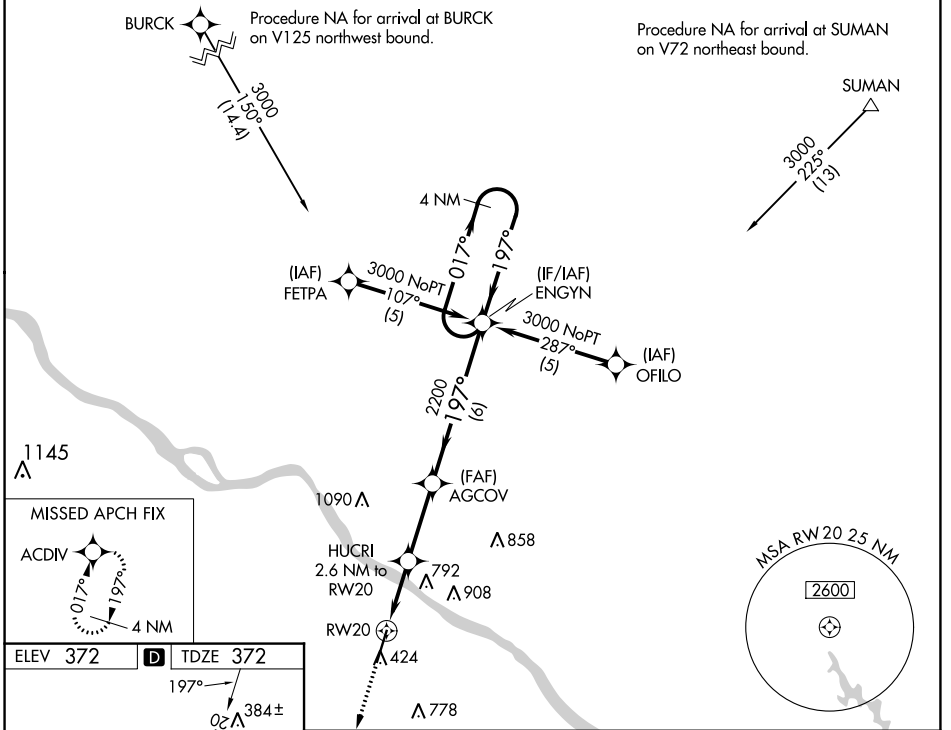
RNAV (GPS) RWY 20

PERRYVILLE RGNL (PCD)

⚠ For uncompensated Baro-VNAV systems, LNAV/VNAV NA below -15°C (5°F) or above 48°C (118°F). DME/DME RNP-0.3 NA.
⚠ Rwy 20 helicopter visibility reduction below ¾ SM NA.

MISSED APPROACH: Climb to 3000 direct ACDIV and hold.

AWOS-3PT 118.95	KANSAS CITY CENTER 127.475 346.275	UNICOM 122.8 (CTAF) ①
---------------------------	--	---------------------------------



CATEGORY	A	B	C	D
LPV DA	622-1 250 (300-1)			
LNAV/VNAV DA	697-1½ 325 (400-1½)			
LNAV MDA	980-1 608 (700-1)	980-1¾ 608 (700-1¾)		
CIRCLING	980-1 608 (700-1)	1000-1 628 (700-1)	1260-2¾ 888 (900-2¾)	1260-3 888 (900-3)

NC-3, 05 SEP 2024 to 03 OCT 2024

NC-3, 05 SEP 2024 to 03 OCT 2024