

(KER4.KER) 24081
KERMIT FOUR DEPARTURE

AL-5726 (FAA)

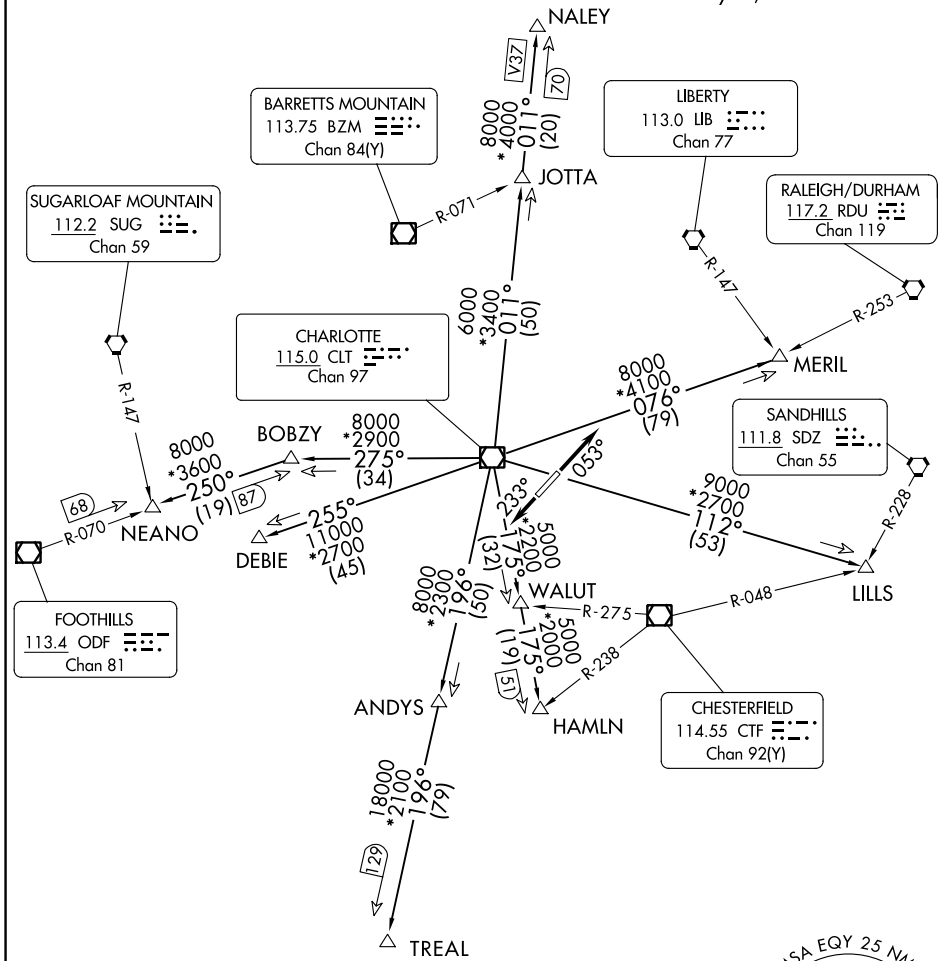
CHARLOTTE/MONROE EXEC (EQY)
 MONROE, NORTH CAROLINA

CHARLOTTE DEP CON
 120.05 307.8
 ASOS
 135.775
 CLNC DEL
 132.55
 UNICOM
 122.7

RADAR and DME required.

**TOP ALTITUDE:
 3000**

TAKEOFF MINIMUMS
 Rwy 5, 23: Standard.



SE-2, 05 SEP 2024 to 03 OCT 2024

SE-2, 05 SEP 2024 to 03 OCT 2024

NOTE: For turbo jet aircraft only.
 NOTE: Upon reaching 10000 MSL, accelerate to and maintain 280K, if unable advise ATC.
 NOTE: Transponder code will be issued via Charlotte clearance delivery.

NOTE: Chart not to scale.

(CONTINUED ON FOLLOWING PAGE)

KERMIT FOUR DEPARTURE
(KER4.KER) 21MAR24

MONROE, NORTH CAROLINA
 CHARLOTTE/MONROE EXEC (EQY)



DEPARTURE ROUTE DESCRIPTION

TAKEOFF RUNWAY 5: Climb on heading 053°, thence

TAKEOFF RUNWAY 23: Climb on heading 233°, thence

. . . . on RADAR vectors to intercept filed/assigned transition or enroute fix/navaid.
Maintain 3000, expect filed altitude/flight level 10 minutes after departure.

ANDYS TRANSITION (KER4.ANDYS): From over CLT VOR/DME on CLT R-196 to ANDYS.

DEBIE TRANSITION (KER4.DEBIE): From over CLT VOR/DME on CLT R-255 to DEBIE.

HAMLN TRANSITION (KER4.HAMLN): From over CLT VOR/DME on CLT R-175 to HAMLN.

JOTTA TRANSITION (KER4.JOTTA): From over CLT VOR/DME on CLT R-011 to JOTTA.

LILLS TRANSITION (KER4.LILLS): From over CLT VOR/DME on CLT R-112 to LILLS.

MERIL TRANSITION (KER4.MERIL): From over CLT VOR/DME on CLT R-076 to MERIL.

NALEY TRANSITION (KER4.NALEY): From over CLT VOR/DME on CLT R-011 to NALEY.

NEANO TRANSITION (KER4.NEANO): From over CLT VOR/DME on CLT R-275 to BOBZY,
then on ODF R-070 to NEANO.

TREAL TRANSITION (KER4.TREAL): From over CLT VOR/DME on CLT R-196 to TREAL.

SE-2, 05 SEP 2024 to 03 OCT 2024

SE-2, 05 SEP 2024 to 03 OCT 2024