

WAAS CH <b>49200</b> <b>W12A</b>	APP CRS <b>116°</b>	Rwy Idg TDZE Apt Elev	<b>4001</b> <b>193</b> <b>193</b>
--	------------------------	-----------------------------	---

# RNAV (GPS) RWY 12

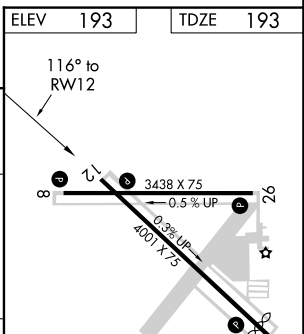
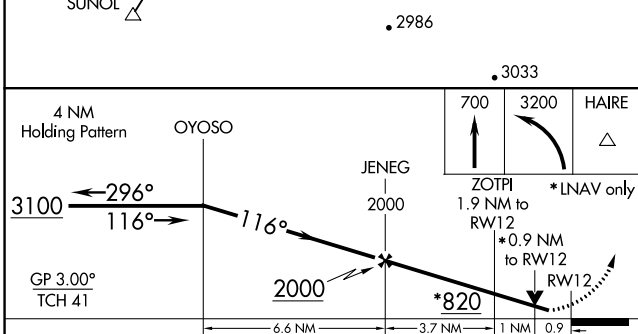
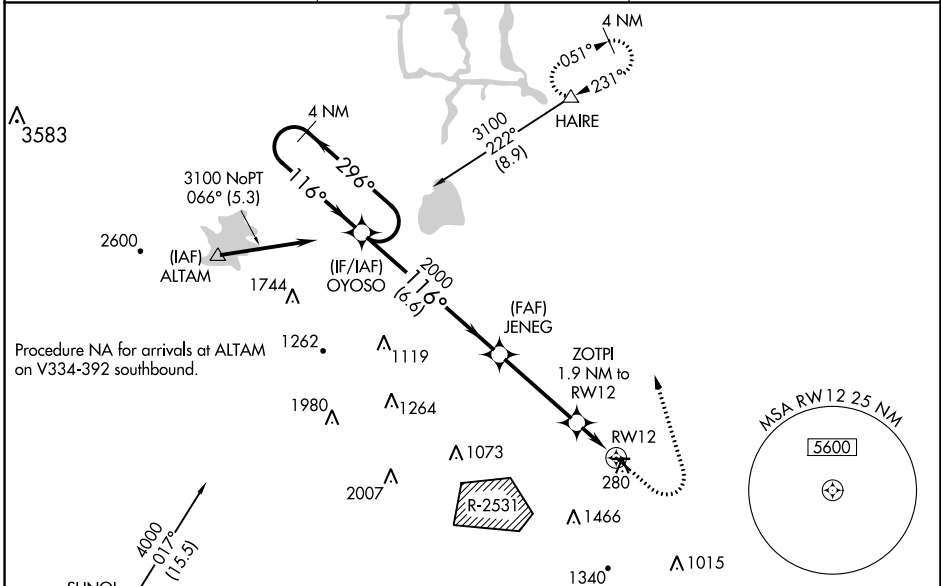
TRACY MUNI (TCY)

RNP APCH

▼ For uncompensated Baro-VNAV systems, LNAV/VNAV NA below -15°C or above 54°C.  
 Circling NA southwest of Rwy 12-30. Baro-VNAV and VDP NA when using Stockton altimeter setting.  
 Circling Rwy 30 NA at night. Rwy 12 helicopter visibility reduction below 3/4 SM NA.  
 When local altimeter setting not received, use Stockton altimeter setting; increase all DAs to 507 feet;  
 increase all MDAs 60 feet and visibilities LNAV Cat C 1/8 SM.

MISSED APPROACH:  
 Climb to 700 then  
 climbing left turn to  
 3200 direct HAIRE  
 and hold.

AWOS-3 <b>118.375</b>	NORCAL APP CON <b>123.85 278.3</b>	UNICOM <b>123.075 (CTAF)</b>
--------------------------	---------------------------------------	---------------------------------



CATEGORY	A	B	C	D
LPV DA	443-7/8	250 (300-7/8)		NA
LNAV/VNAV DA	447-7/8	254 (300-7/8)		NA
LNAV MDA	520-1	327 (400-1)		NA
CIRCLING	580-1 387 (400-1)	660-1 467 (500-1)	660-1 1/2 467 (500-1 1/2)	NA

ELEV 193 | TDZE 193

116° to RWY 12

MIRL Rwy 8-26 and 12-30  
 REIL Rwy 8, 12, 26 and 30

SW-2, 05 SEP 2024 to 03 OCT 2024

SW-2, 05 SEP 2024 to 03 OCT 2024