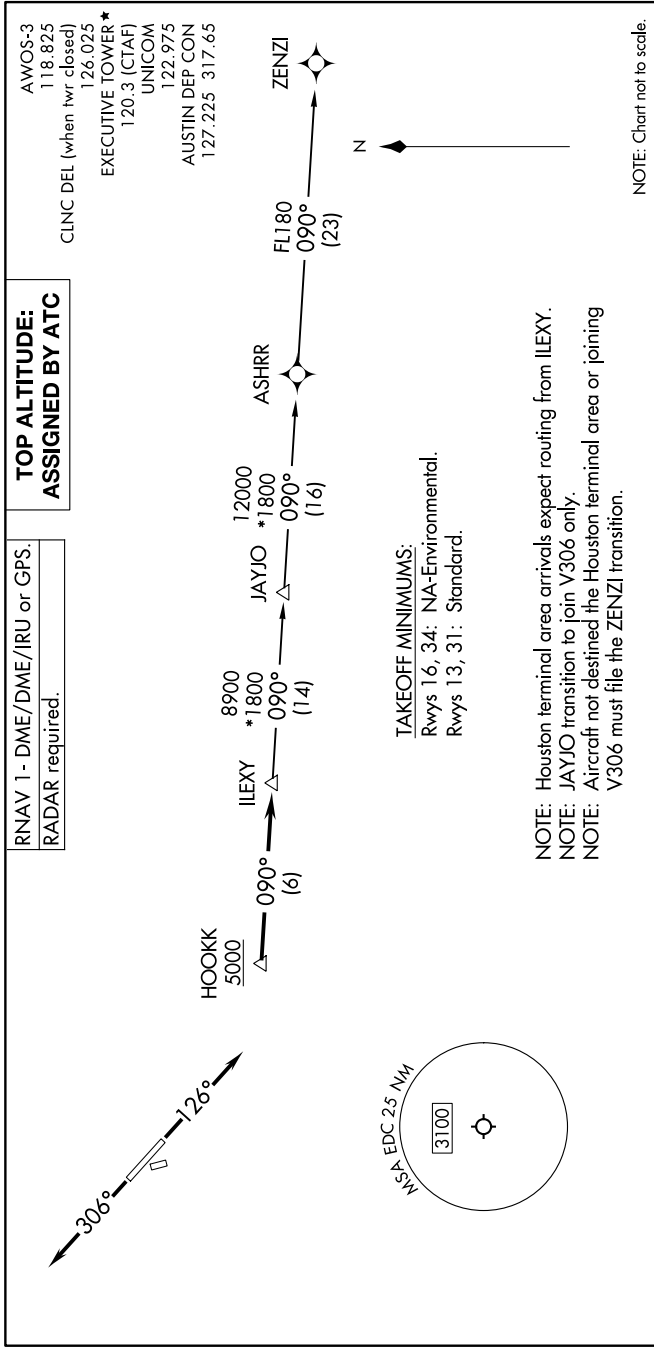


ILEXY FOUR DEPARTURE (RNAV)

SC-3, 05 SEP 2024 to 03 OCT 2024



TAKEOFF MINIMUMS:
 Rwy 16, 34: NA-Environmental.
 Rwy 13, 31: Standard.

NOTE: Houston terminal area arrivals expect routing from ILEXY.
NOTE: JAYJO transition to join V306 only.
NOTE: Aircraft not destined the Houston terminal area or joining V306 must file the ZENZI transition.

NOTE: Chart not to scale.

DEPARTURE ROUTE DESCRIPTION

TAKEOFF RUNWAY 13: Climb on heading 126° or as assigned by ATC for vectors to cross HOOKK at or above 5000, thence. . . .
TAKEOFF RUNWAY 31: Climb on heading 306° or as assigned by ATC for vectors to cross HOOKK at or above 5000, thence. . . .

. . . on track 090° to ILEXY, then on transition. Maintain altitude assigned by ATC. Expect filed altitude 10 minutes after departure.

JAYJO TRANSITION (ILEXY4.JAYJO)
 ZENZI TRANSITION (ILEXY4.ZENZI)

SC-3, 05 SEP 2024 to 03 OCT 2024

ILEXY FOUR DEPARTURE (RNAV)

(ILEXY4.ILEXY) 15JUN23