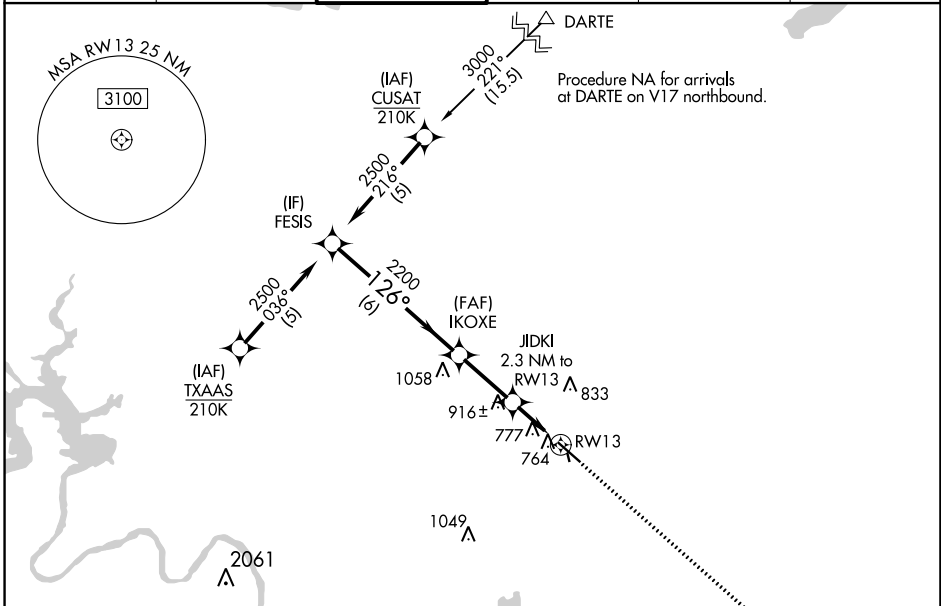


WAAS CH 63116 W13A	APP CRS 126°	Rwy Idg TDZE Apt Elev	5425 620 620
--	------------------------	-----------------------------	---

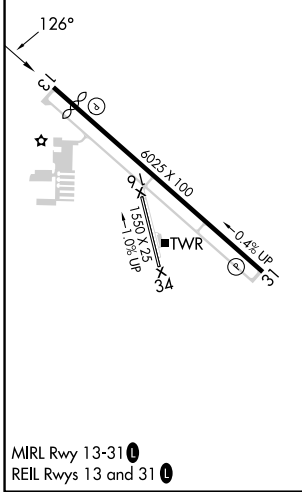
RNAV (GPS) RWY 13

AUSTIN EXEC (EDC)

RNP APCH - GPS.		<p>⚠ Circling NA to Rwy 16 and 34. Rwy 13 helicopter visibility reduction below 3/4 SM NA. For uncompensated Baro-VNAV systems, LNAV/VNAV NA below -16°C or above 54°C.</p>		<p>MISSED APPROACH: Climb to 2200 direct CIRMU and hold.</p>	
AWOS-3 118.825	AUSTIN APP CON 127.225 317.65	EXECUTIVE TOWER★ 120.3 (CTAF) 0	GND CON 119.45	CLNC DEL 126.025 (When twr closed)	UNICOM 122.975



ELEV 620	TDZE 620
----------	----------



	FESIS	IKOXE	JIDKI	RWY 13
	2500	2200	2.3 NM to RWY 13	1.3 NM to RWY 13
	2500	2200	1380	2200
	GP 3.00° TCH 40			
	6 NM 2.5 NM 1 NM 1.3 NM			
CATEGORY	A	B	C	D
LPV DA		870-3/4 250 (300-3/4)		
LNAV/VNAV DA		1080-1 3/8 460 (500-1 3/8)		
LNAV MDA	1080-1	460 (500-1)	1080-1 3/8	460 (500-1 3/8)
C CIRCLING	1140-1 520 (600-1)	1160-1 540 (600-1)	1280-1 3/4 660 (700-1 3/4)	1280-2 660 (700-2)

SC-3, 05 SEP 2024 to 03 OCT 2024

SC-3, 05 SEP 2024 to 03 OCT 2024