

WAAS CH <b>86502</b> <b>W11A</b>	APP CRS <b>107°</b>	Rwy Idg TDZE <b>145</b> Apt Elev <b>146</b>	<b>4001</b>
--	------------------------	---	-------------

# RNAV (GPS) RWY 11

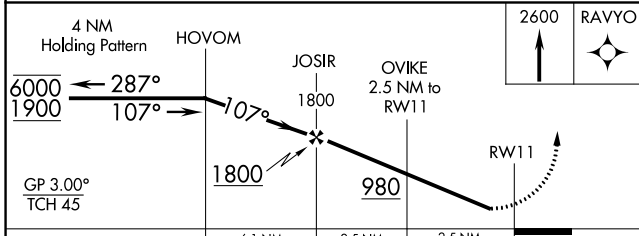
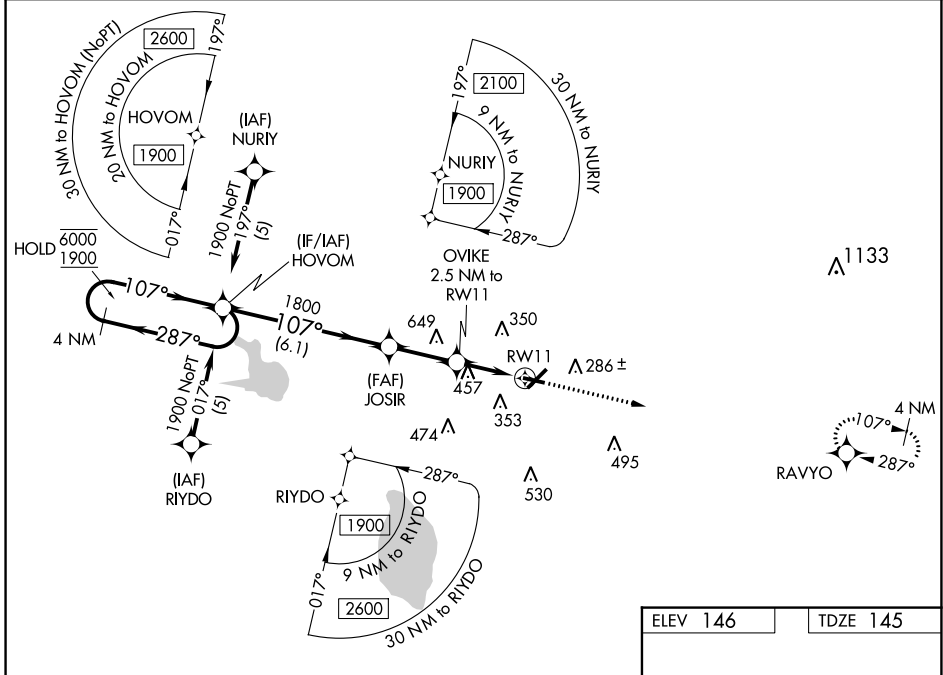
WINTER HAVEN RGNL (GIF')

RNP APCH-GPS.

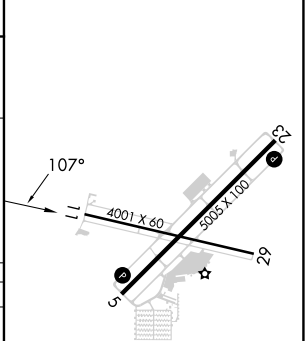
▼ Rwy 11 helicopter visibility reduction below 1 SM NA. Baro-VNAV NA when using Bartow altimeter setting. For uncompensated Baro-VNAV systems, LNAV/VNAV NA below 3°C or above 54°C. When local altimeter setting not received, use Bartow altimeter setting and increase LPV DA to 415 feet; increase LNAV/VNAV DA to 667 feet and all visibilities ½ SM; increase all MDAs 20 feet. Straight-in Rwy 11 NA at night, Circling Rwy 5, 11, 29 NA at night.

MISSED APPROACH: Climb to 2600 direct RAVYO and hold.

ASOS <b>133.675</b>	TAMPA APP CON <b>120.65 290.3</b>	CLNC DEL (GCO) <b>121.725</b>	UNICOM <b>123.05 (CTAF) 0</b>
------------------------	--------------------------------------	----------------------------------	----------------------------------



ELEV 146	TDZE 145
----------	----------



CATEGORY	A	B	C	D
LPV DA	395-1 250 (300-1)			
LNAV/VNAV DA	647-1 502 (600-1 3/8)			
LNAV MDA	760-1	615 (700-1)	760-1 3/4	615 (700-1 3/4)
CIRCLING	760-1	614 (700-1)	820-2 674 (700-2)	960-2 3/4 814 (900-2 3/4)

REIL Rwys 5 and 23  
REIL Rwys 11 and 29  
MIRL Rwy 5-23 and 11-29

SE-3, 05 SEP 2024 to 03 OCT 2024

SE-3, 05 SEP 2024 to 03 OCT 2024