

VORTAC LAL 116.0 Chan 107	APP CRS 071°	Rwy Idg TDZE Apt Elev	N/A N/A 146
---	------------------------	-----------------------------	--

VOR-A

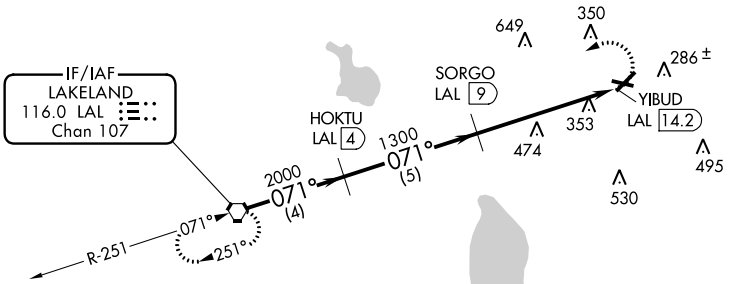
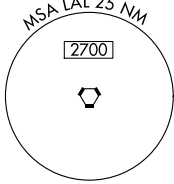
WINTER HAVEN RGNL (GIF')

DME required.

⚠ Circling Rwy 5, 11, 29 NA at night. When local altimeter setting not received, use Bartow altimeter setting and increase all MDAs 20 feet.

MISSED APPROACH: Climbing left turn to 2000 direct LAL VORTAC and hold.

ASOS 133.675	TAMPA APP CON 120.65 290.3	CLNC DEL (GCO) 121.725	UNICOM 123.05 (CTAF) 0
------------------------	--------------------------------------	----------------------------------	----------------------------------

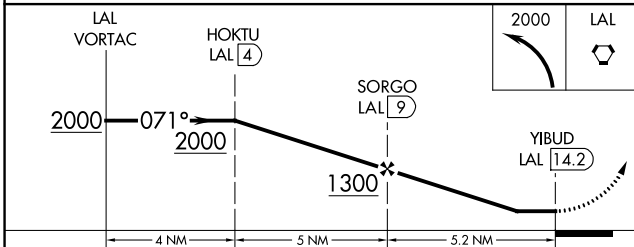
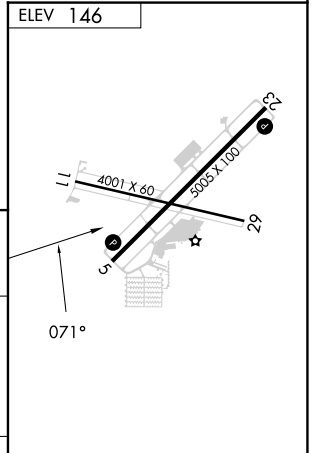


Procedure NA for arrival on LAL VORTAC airway radials 046 CW 080.

SE-3, 05 SEP 2024 to 03 OCT 2024

SE-3, 05 SEP 2024 to 03 OCT 2024

▲ 1667



CATEGORY	A	B	C	D
CIRCLING	780-1	634 (700-1)	820-2 674 (700-2)	960-2¾ 814 (900-2¾)

REIL Rwys 5 and 23
REIL Rwys 11 and 29 **0**
MIRL Rwy 5-23 and 11-29 **0**