

# RNAV (GPS) RWY 14

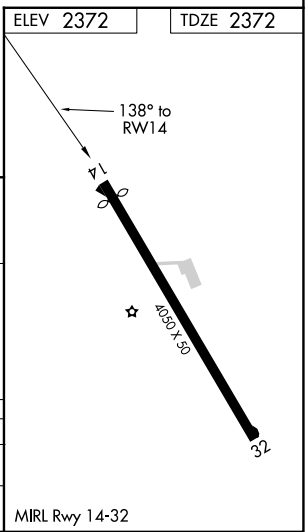
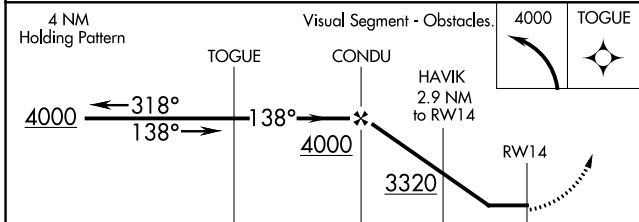
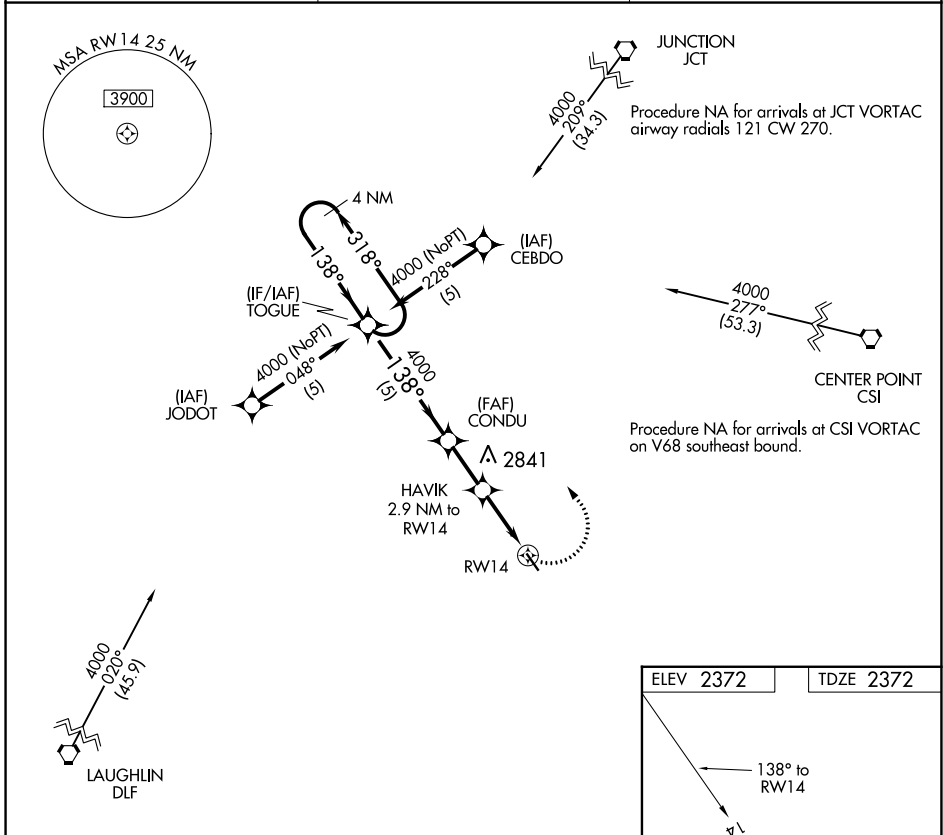
EDWARDS COUNTY (ECU)

APP CRS <b>138°</b>	Rwy Idg <b>3772</b>
	TDZE <b>2372</b>
	Apt Elev <b>2372</b>

**▼** DME/DME RNP-0.3 NA.  
**▲** NA Procedure NA at night.  
 Helicopter visibility reduction below 1 SM NA.

**MISSED APPROACH:** Climbing left turn to 4000 direct TOGUE and hold.

AWOS-3 <b>118.175</b>	DEL RIO APP CON ★ <b>119.6 259.1</b>	CTAF <b>122.9</b>
--------------------------	---	----------------------



CATEGORY	A	B	C	D
LNVA MDA	2960-1	588 (600-1)	2960-1½ 588 (600-1½)	NA
<b>C</b> CIRCLING	3000-1	628 (700-1)	3000-1¾ 628 (700-1¾)	NA

SC-3, 05 SEP 2024 to 03 OCT 2024

SC-3, 05 SEP 2024 to 03 OCT 2024