

VORTAC RSG <b>114.55</b> Chan <b>92(Y)</b>	APP CRS <b>111°</b>	Rwy ldg TDZE Apt Elev	<b>3772</b> <b>2372</b> <b>2372</b>
--------------------------------------------------	------------------------	-----------------------------	-------------------------------------------

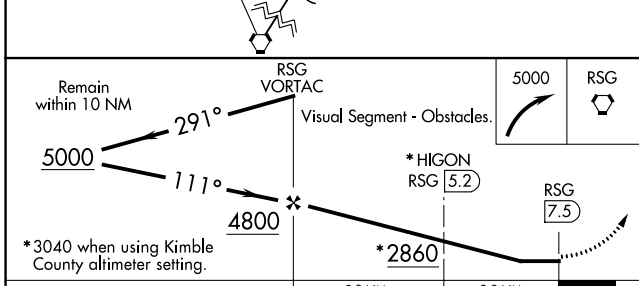
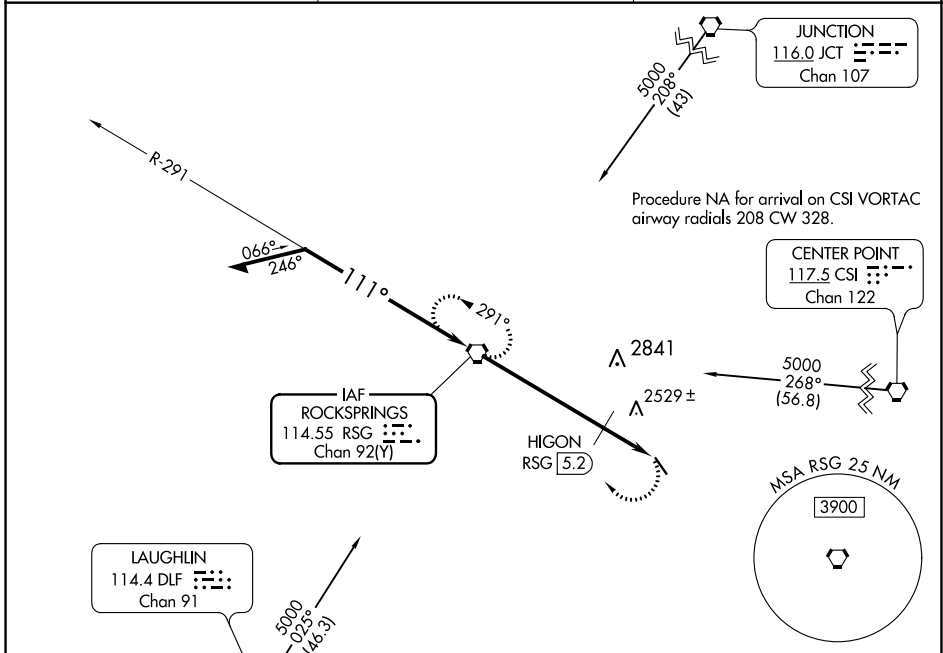
# VOR RWY 14

EDWARDS COUNTY (ECU)

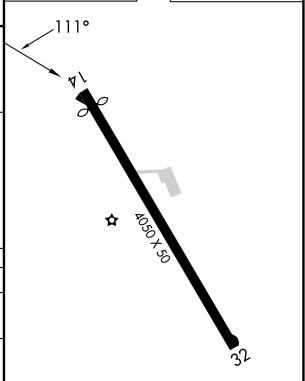
**⚠** When local altimeter setting not received, use Kimble County altimeter setting and increase all MDA's 180 feet. Procedure NA at night.  
**⚠** Rwy 14 helicopter visibility reduction below 1 SM NA.

MISSED APPROACH: Climbing right turn to 5000 direct RSG VORTAC and hold, continue climb-in-hold to 5000.

AWOS-3 <b>118.175</b>	DEL RIO APP CON * <b>119.6 259.1</b>	CTAF <b>122.9</b>
--------------------------	-----------------------------------------	----------------------



ELEV 2372	TDZE 2372
-----------	-----------



CATEGORY	A	B	C	D
S-14	2860-1	488 (500-1)	2860-1¼ 488 (500-1¼)	NA
CIRCLING	2860-1	488 (500-1)	2860-1½ 488 (500-1½)	NA
HIGON FIX MINIMUMS				
S-14	2780-1	408 (500-1)	2780-1¼ 408 (500-1¼)	NA
<b>C</b> CIRCLING	2800-1 428 (500-1)	2840-1 468 (500-1)	2840-1½ 468 (500-1½)	NA

MIRL Rwy 14-32

FAF to MAP 7.5 NM					
Knots	60	90	120	150	180
Min:Sec	7:30	5:00	3:45	3:00	2:30

SC-3, 05 SEP 2024 to 03 OCT 2024

SC-3, 05 SEP 2024 to 03 OCT 2024