

WAAS CH 81935 W26A	APP CRS 259°	Rwy Idg TDZE Apt Elev	4051 696 698
--	------------------------	-----------------------------	---

RNAV (GPS) RWY 26

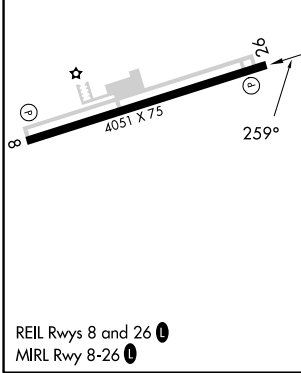
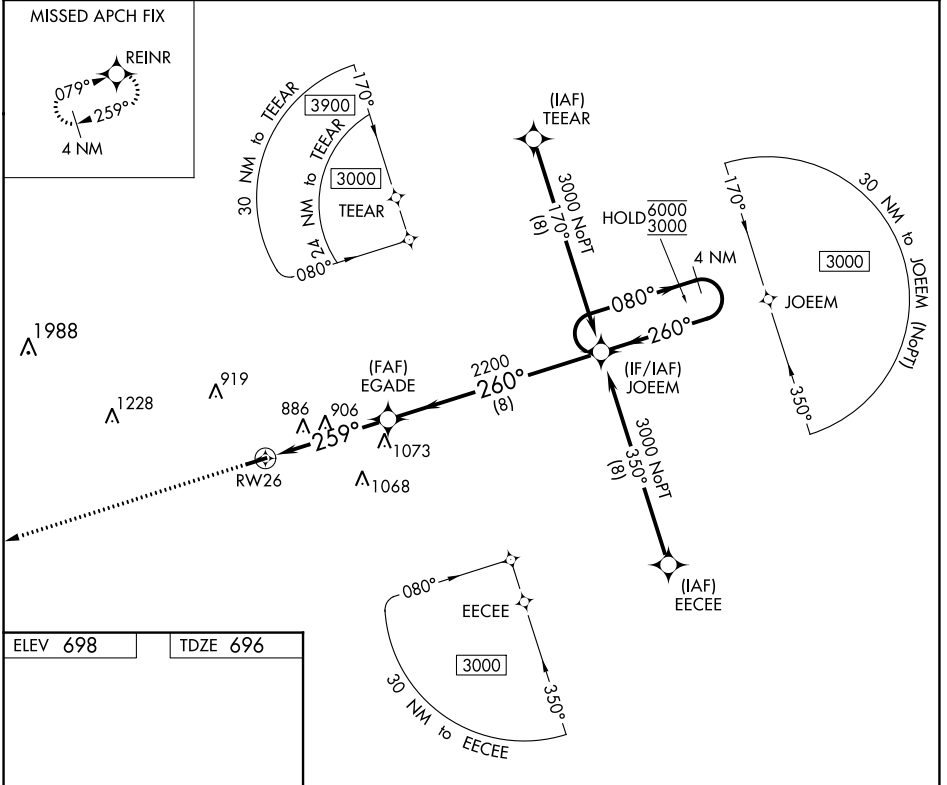
LAURENS COUNTY (LUX)

RNP APCH-GPS.

▼ Rwy 26 helicopter visibility reduction below $\frac{3}{4}$ SM NA.

MISSED APPROACH: Climb to 3000 direct REINR and hold.

AWOS-3 123.975	GREER APP CON ★ 120.6 350.2	UNICOM 122.8 (CTAF) 0
--------------------------	---------------------------------------	---------------------------------



3000	REINR	VGSI and descent angles not coincident (VGSI Angle 3.25/TCH 53).	4 NM Holding Pattern
		JOEEM	080° → 6000 ← 260° 3000
		EGADDE	2200
		RWY 26	259°
		TCH 39	3.00°
		1.2	3.4 NM
		8 NM	
CATEGORY	A	B	C
LP MDA	1160-1	464 (500-1)	NA
LNAV MDA	1160-1	464 (500-1)	NA
CIRCLING	1200-1	502 (600-1)	NA

SE-2, 05 SEP 2024 to 03 OCT 2024

SE-2, 05 SEP 2024 to 03 OCT 2024