

(MAREO5.MAREO) 23334
MAREO FIVE DEPARTURE

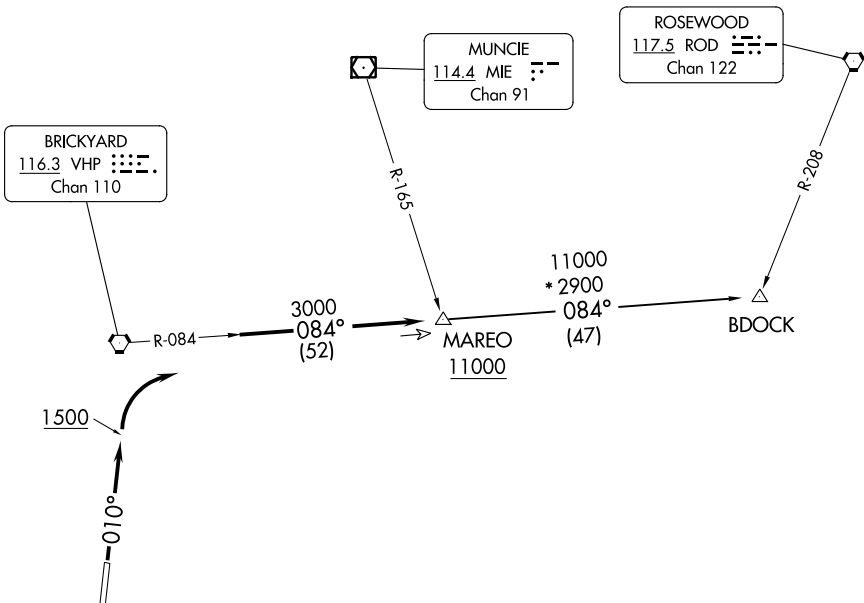
AL-6614 (FAA)

INDY SOUTH GREENWOOD (HFY)
 INDIANAPOLIS, INDIANA

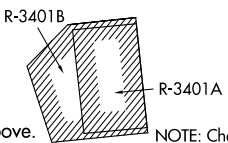
AWOS-3P
 118.525
 INDIANAPOLIS DEP CON
 124.95 317.8

**TOP ALTITUDE:
 ASSIGNED BY ATC**

TAKEOFF MINIMUMS:
 Rwy 1, 19: Standard.



- NOTE: RADAR required.
- NOTE: Select appropriate localizer/DME frequency/channel prior to departure.
- NOTE: Turbojets accelerate to 250K until reaching 10000, if unable advise ATC.
- NOTE: Assigned to aircraft with a requested altitude of 11000 or above.



DEPARTURE ROUTE DESCRIPTION

TAKEOFF RWY 1: Climb heading 010° to 1500 before turning right. Then on assigned heading to assigned altitude. Thence....

DEPARTING ALL OTHER AUTHORIZED RUNWAYS: Climb on assigned heading to assigned altitude. Thence....

...expect RADAR vectors to join VHP R-084 to MAREO INT then via transition or assigned route. Expect clearance to requested altitude ten minutes after departure.

BDOCK TRANSITION (MAREO5.BDOCK): From over MAREO INT via VHP R-084 to BDOCK INT.

MAREO FIVE DEPARTURE
 (MAREO5.MAREO) 01FEB18

INDIANAPOLIS, INDIANA
 INDY SOUTH GREENWOOD (HFY)

EC-2, 05 SEP 2024 to 03 OCT 2024

EC-2, 05 SEP 2024 to 03 OCT 2024