

(ROCKY1.ROCKY) 23334
ROCKY ONE DEPARTURE

AL-6614 (FAA)

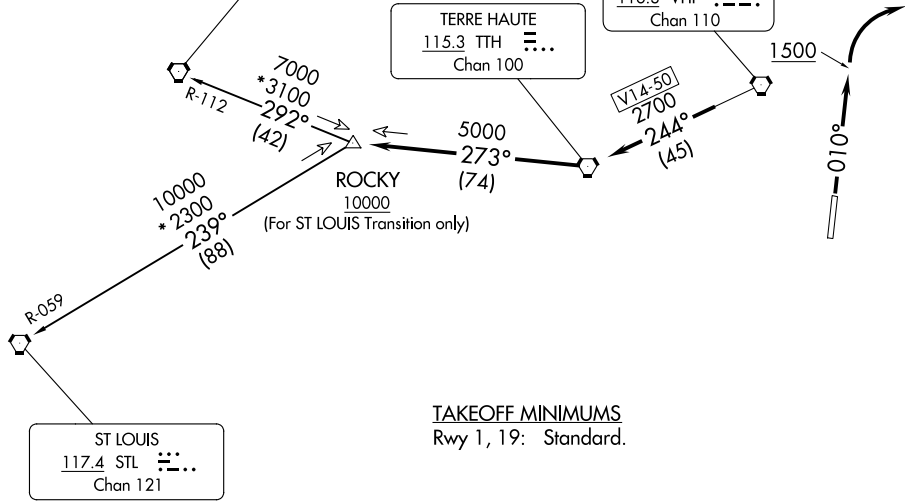
INDY SOUTH GREENWOOD (HFY)
 INDIANAPOLIS, INDIANA

AWOS-3P
 118.525
 INDIANAPOLIS DEP CON
 124.95 317.8

SPINNER
 112.7 SPI
 Chan 74

TERRE HAUTE
 115.3 TTH
 Chan 100

BRICKYARD
 116.3 VHP
 Chan 110



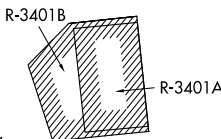
TAKEOFF MINIMUMS
 Rwy 1, 19: Standard.

NOTE: RADAR required.

NOTE: Select appropriate localizer/DME frequency/channel prior to departure.

NOTE: Turbojets accelerate to 250K until reaching 10000, if unable advise ATC.

NOTE: Assigned to aircraft with a requested altitude of 11000 or above.



NOTE: Chart not to scale.

DEPARTURE ROUTE DESCRIPTION

TAKEOFF RWY 1: Climb heading 010° to 1500 before turning right. Then on assigned heading to assigned altitude. Thence

DEPARTING ALL OTHER AUTHORIZED RUNWAYS: Climb on assigned heading to assigned altitude. Thence

. . . . expect RADAR vectors to join VHP R-244 to TTH VORTAC, then via TTH R-273 to ROCKY INT then via transition or assigned route. Expect clearance to requested altitude ten minutes after departure.

SPINNER TRANSITION (ROCKY1.SPI): From over ROCKY INT on SPI R-112 to SPI VORTAC.

ST LOUIS TRANSITION (ROCKY1.STL): From over ROCKY INT on STL R-059 to STL VORTAC.

ROCKY ONE DEPARTURE
(ROCKY1.ROCKY) 01FEB18

INDIANAPOLIS, INDIANA
 INDY SOUTH GREENWOOD (HFY)

EC-2, 05 SEP 2024 to 03 OCT 2024

EC-2, 05 SEP 2024 to 03 OCT 2024