

RNAV (GPS) RWY 35

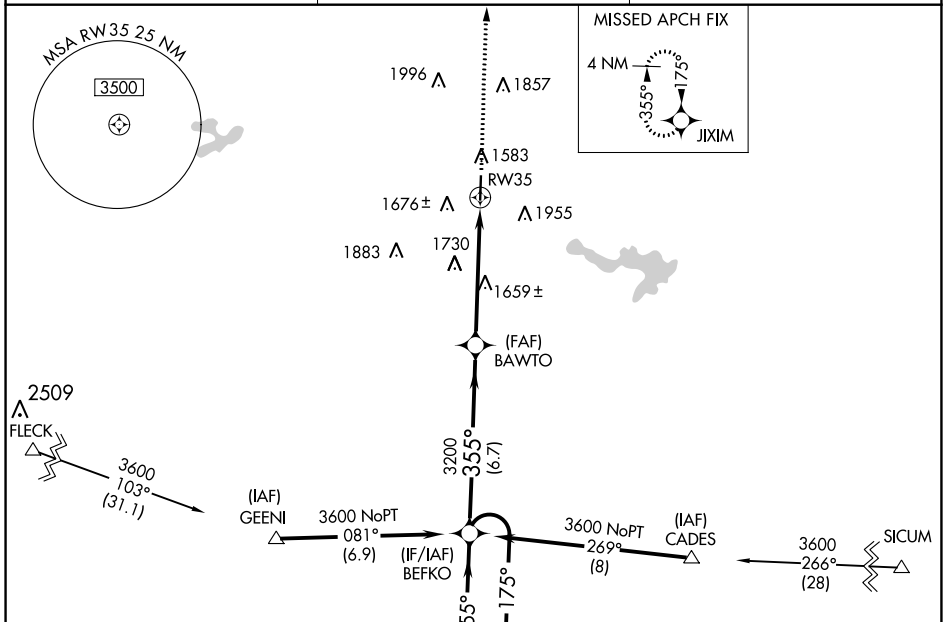
EASTLAND MUNI (ETN)

APP CRS 355°	Rwy Idg TDZE Apt Elev	4580 1458 1468
------------------------	-----------------------------	---

⚠ For uncompensated Baro-VNAV systems, LNAV/VNAV NA below -22°C (-7°F) or above 54°C (130°F).
⚠ DME/DME RNP-0.3 NA. When local altimeter setting not received, use Breckenridge altimeter setting; increase LNAV/VNAV DA to 1846 feet and all visibilities 1/8 SM; increase all MDAs 80 feet and LNAV and Circling visibility Cat C 1/4 SM. Baro-VNAV NA when using Breckenridge altimeter setting. Circling Rwy 17 NA at night. Helicopter visibility reduction below 3/4 SM NA.

MISSED APPROACH:
Climb to 3600 direct JIXIM and hold.

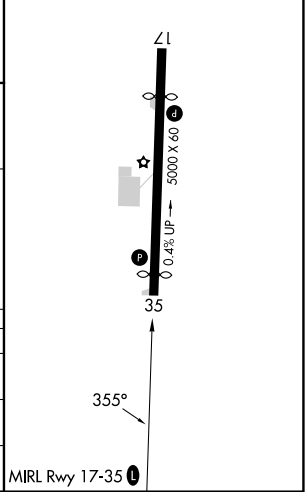
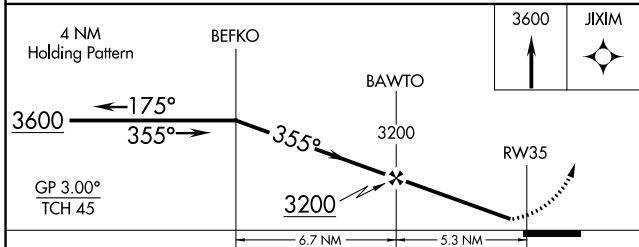
AWOS-3PT 118.45	FORT WORTH CENTER 127.15 314.0	UNICOM 122.8 (CTAF) 0
---------------------------	--	---------------------------------



SC-2, 05 SEP 2024 to 03 OCT 2024

SC-2, 05 SEP 2024 to 03 OCT 2024

ELEV 1468	TDZE 1458
-----------	-----------



CATEGORY	A	B	C	D
LNAV/ VNAV DA	1777-1 319 (400-1)			NA
LNAV MDA	1980-1	522 (600-1)	1980-1½ 522 (600-1½)	NA
CIRCLING	2120-1 652 (700-1)	2320-1¼ 852 (900-1¼)	2320-2½ 852 (900-2½)	NA