

WAAS CH 99742	APP CRS 122°	Rwy ldg TDZE Apt Elev	4248 59 66
W12A			

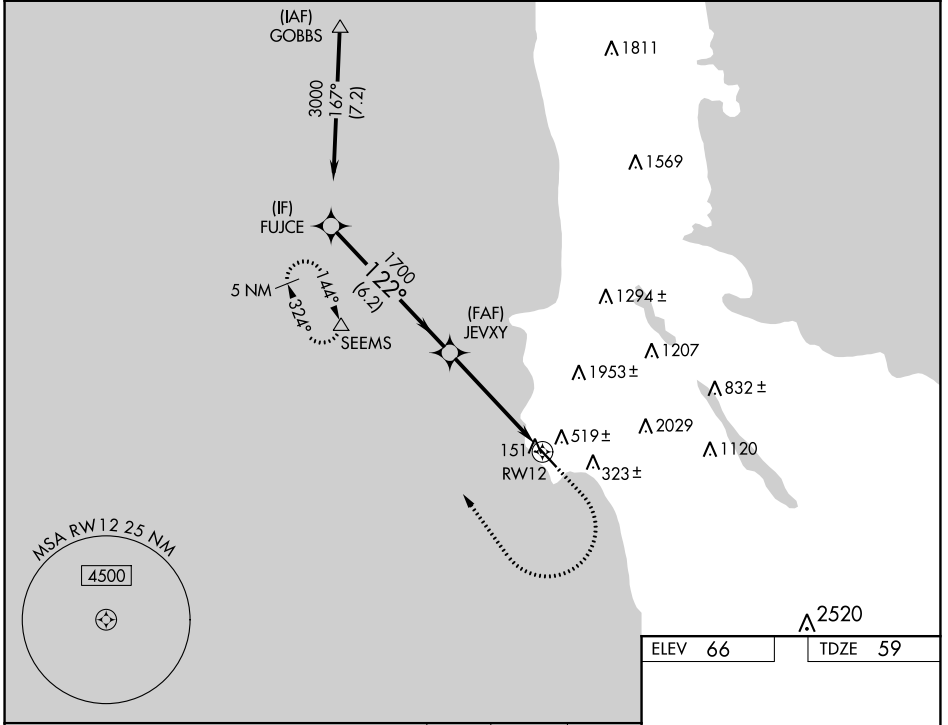
RNAV (GPS) RWY 12

HALF MOON BAY (HAF')

RNP APCH.
 ▼ Rwy 12 helicopter visibility reduction below 3/4 SM NA. For uncompensated Baro-VNAV systems, LNAV/VNAV NA below -15° C or above 54° C.

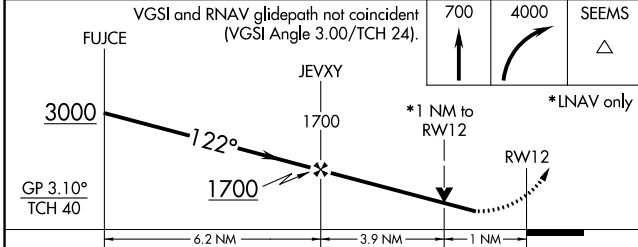
MISSED APPROACH: Climb to 700 then climbing right turn to 4000 direct SEEMS and hold, continue climb-in-hold to 4000.

AWOS 127.275	NORCAL APP CON 135.1 307.2	UNICOM 122.8 (CTAF) 0
------------------------	--------------------------------------	--

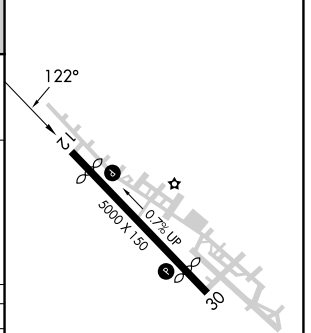


SW-2, 05 SEP 2024 to 03 OCT 2024

SW-2, 05 SEP 2024 to 03 OCT 2024



ELEV 66	TDZE 59
----------------	----------------



CATEGORY	A	B	C	D
LPV DA	360-7/8		301 (300-7/8)	
LNAV/VNAV DA	652-1 3/4		593 (600-1 3/4)	
LNAV MDA	660-1	601 (600-1)	660-1 3/4	601 (600-1 3/4)

REIL Rwy 30 **0**
 MIRL Rwy 12-30 **0**